

SEC 28, T 6 N, R 3 W, 4th PM

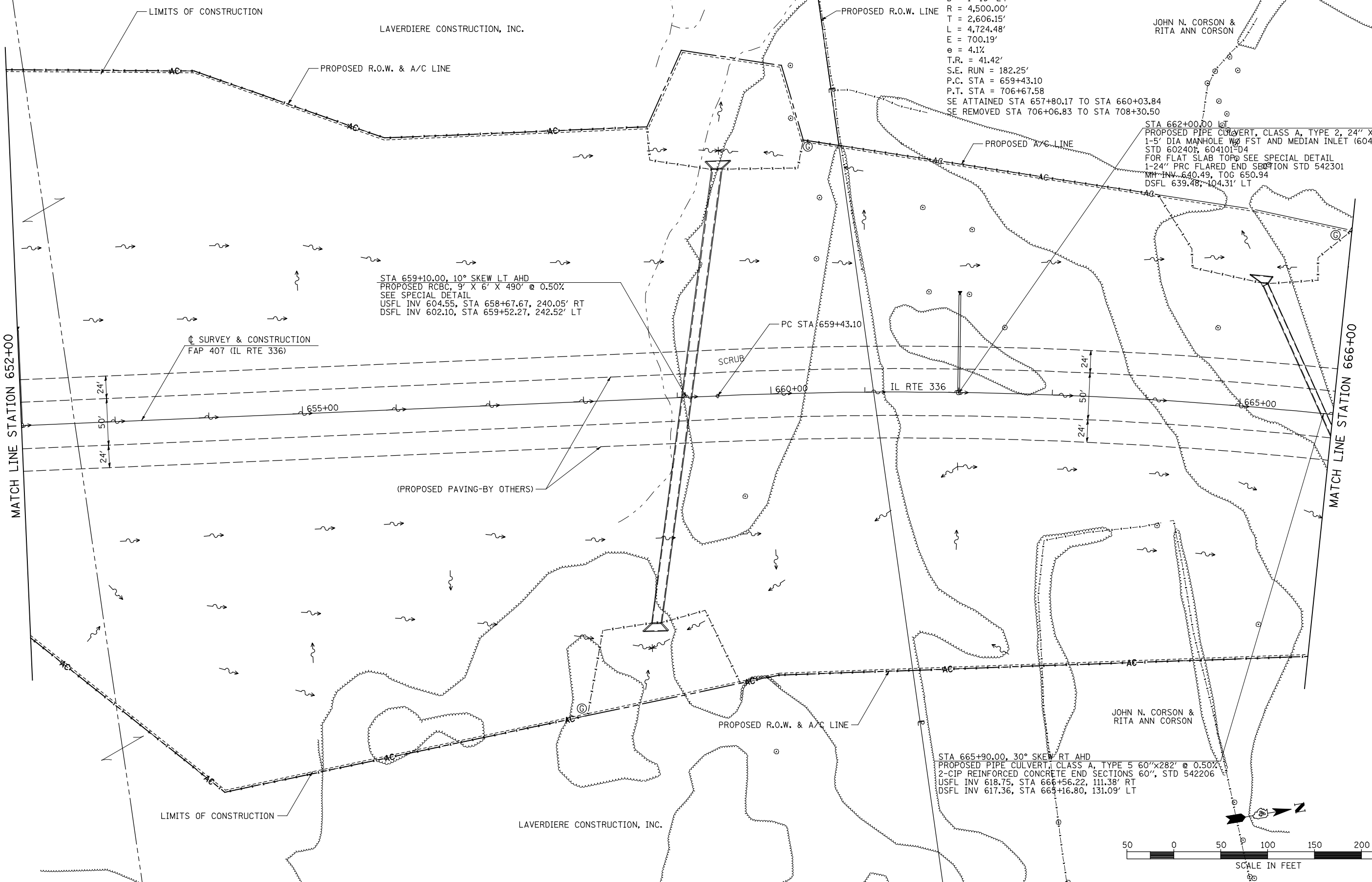
PROP. CURVE IL336-4  
 PI STA. = 685+49.24  
 $\Delta = 60^{\circ} 09' 14''$  (RT)  
 $D = 1^{\circ} 16' 24''$   
 $R = 4,500.00'$   
 $T = 2,606.15'$   
 $L = 4,724.48'$   
 $E = 700.19'$   
 $e = 4.1\%$   
 $T.R. = 41.42'$   
 $S.E. RUN = 182.25'$   
 $P.C. STA = 659+43.10$   
 $P.T. STA = 706+67.58$   
 SE ATTAINED STA 657+80.17 TO STA 660+03.84  
 SE REMOVED STA 706+06.83 TO STA 708+30.50

JOHN N. CORSON &  
 RITA ANN CORSON

STA 662+00.00 LGT  
 PROPOSED PIPE CULVERT, CLASS A, TYPE 2, 24" X 104'  
 1-5' DIA MANHOLE W/ FST AND MEDIAN INLET (604106), SPECIAL  
 STD 60240E, 604101-D4  
 FOR FLAT SLAB TOP SEE SPECIAL DETAIL  
 1-24" PRC FLARED END SECTION STD 542301  
 MH INV. 640.49, TOG 650.94  
 DSFL 639.48, 104.31' LT

STA 659+10.00, 10° SKEW LT AHD  
 PROPOSED RCBC, 9' X 6' X 490' @ 0.50%  
 SEE SPECIAL DETAIL  
 USFL INV 604.55, STA 658+67.67, 240.05' RT  
 DSFL INV 602.10, STA 659+52.27, 242.52' LT

STA 665+90.00, 30° SKEW RT AHD  
 PROPOSED PIPE CULVERT, CLASS A, TYPE 5 60"x282' @ 0.50%  
 2-CIP REINFORCED CONCRETE END SECTIONS 60', STD 542206  
 USFL INV 618.75, STA 666+56.22, 111.38' RT  
 DSFL INV 617.36, STA 665+16.80, 131.09' LT



LIMITS OF CONSTRUCTION

LAVERDIERE CONSTRUCTION, INC.

PROPOSED R.O.W. LINE

PROPOSED R.O.W. & A/C LINE

PROPOSED A/C LINE

☐ SURVEY & CONSTRUCTION  
 FAP 407 (IL RTE 336)

SCRUB

PC STA 659+43.10

IL RTE 336

(PROPOSED PAVING-BY OTHERS)

JOHN N. CORSON &  
 RITA ANN CORSON

LIMITS OF CONSTRUCTION

LAVERDIERE CONSTRUCTION, INC.

FILE NAME =	USER NAME = jdeen	DESIGNED - JRB	REVISED -
W:\Transportation\2891\Grading Plans\2891D09.dgn		DRAWN - RLR	REVISED -
PLOT SCALE = 100.00' / IN.		CHECKED - AWM	REVISED -
PLOT DATE = 12/12/2012		DATE - 12-12-12	REVISED -

STATE OF ILLINOIS  
 DEPARTMENT OF TRANSPORTATION

FAP 407 (IL RTE 336)  
 GRADING & DRAINAGE PLAN & PROFILE  
 STATION 652+00 TO STATION 666+00  
 SCALE: 1"=50'  
 SHEET NO. 17 OF 37 SHEETS  
 STA. 652+00 TO STA. 666+00

F.A.P. RTE.	SECTION	COUNTY	TOTAL SHEETS	SHEET NO.
407	(55-3)A	McDONOUGH	671	123
			CONTRACT NO. 68A42	
ILLINOIS FED. AID PROJECT				