

SEC 28, T 6 N, R 3 W, 4th PM


PROP. CURVE IL336-4
 PI STA. = 685+49.24
 $\Delta = 60^{\circ} 09' 14''$ (RT)
 $D = 1^{\circ} 16' 24''$
 $R = 4,500.00'$
 $T = 2,606.15'$
 $L = 4,724.48'$
 $E = 700.19'$
 $e = 4.1\%$
 $T.R. = 41.42'$
 $S.E. RUN = 182.25'$
 $P.C. STA = 659+43.10$
 $P.T. STA = 706+67.58$
 $SE ATTAINED STA 657+80.17 TO STA 660+03.84$
 $SE REMOVED STA 706+06.83 TO STA 708+30.50$

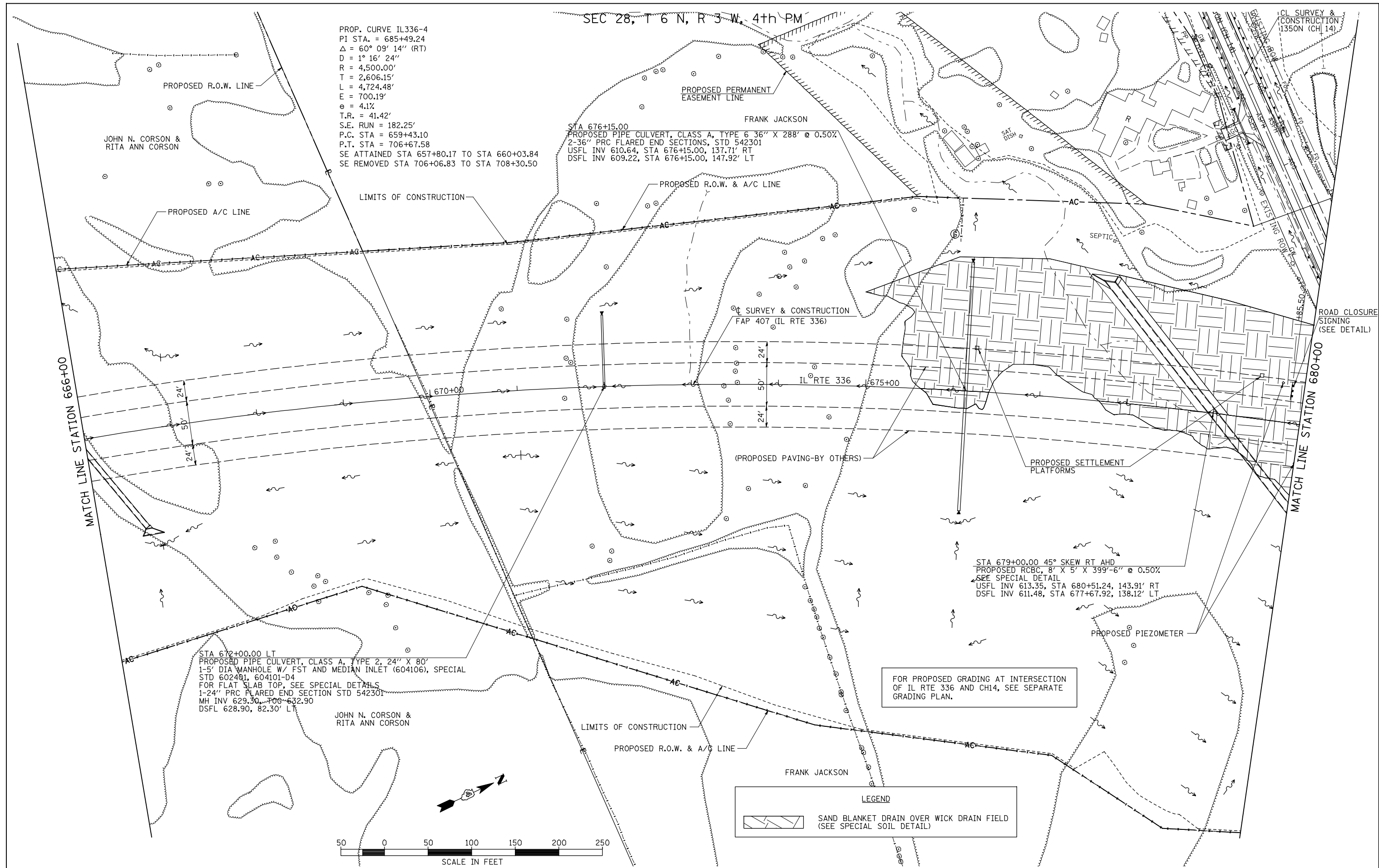
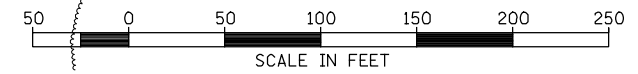
STA 676+15.00
 PROPOSED PIPE CULVERT, CLASS A, TYPE 6 36" X 288" @ 0.50%
 2-36" PRC FLARED END SECTIONS, STD 542301
 USFL INV 610.64, STA 676+15.00, 137.71' RT
 DSFL INV 609.22, STA 676+15.00, 147.92' LT

STA 672+00.00 LT
 PROPOSED PIPE CULVERT, CLASS A, TYPE 2, 24" X 80"
 1-5' DIA MANHOLE W/ FST AND MEDIAN INLET (604106), SPECIAL
 STD 602401, 604101-D4
 FOR FLAT SLAB TOP, SEE SPECIAL DETAILS
 1-24" PRC FLARED END SECTION STD 542301
 MH INV 629.30, STA 672+00.00
 DSFL 628.90, 82.30' LT

STA 679+00.00 45° SKEW RT AHD
 PROPOSED RCBC, 8' X 5' X 399'-6" @ 0.50%
 SEE SPECIAL DETAIL
 USFL INV 613.35, STA 680+51.24, 143.91' RT
 DSFL INV 611.48, STA 677+67.92, 138.12' LT

FOR PROPOSED GRADING AT INTERSECTION
 OF IL RTE 336 AND CH14, SEE SEPARATE
 GRADING PLAN.

LEGEND
 SAND BLANKET DRAIN OVER WICK DRAIN FIELD
 (SEE SPECIAL SOIL DETAIL)



FILE NAME =	USER NAME = jdeen	DESIGNED - JRB	REVISED -
W:\Transportation\2891\Grading Plans\2891\DI0.dgn		DRAWN - RLR	REVISED -
PLOT SCALE = 1/8" = 1' / IN.		CHECKED - AWM	REVISED -
PLOT DATE = 12/12/2012		DATE - 12-12-12	REVISED -

**STATE OF ILLINOIS
 DEPARTMENT OF TRANSPORTATION**

**FAP 407 (IL RTE 336)
 GRADING & DRAINAGE PLAN & PROFILE
 STATION 666+00 TO STATION 680+00**
 SCALE: 1"=50' SHEET NO. 19 OF 37 SHEETS STA. 666+00 TO STA. 680+00

F.A.P. RTE.	SECTION	COUNTY	TOTAL SHEETS	SHEET NO.
407	(55-3)A	McDONOUGH	671	125
			CONTRACT NO. 68A42	
ILLINOIS FED. AID PROJECT				