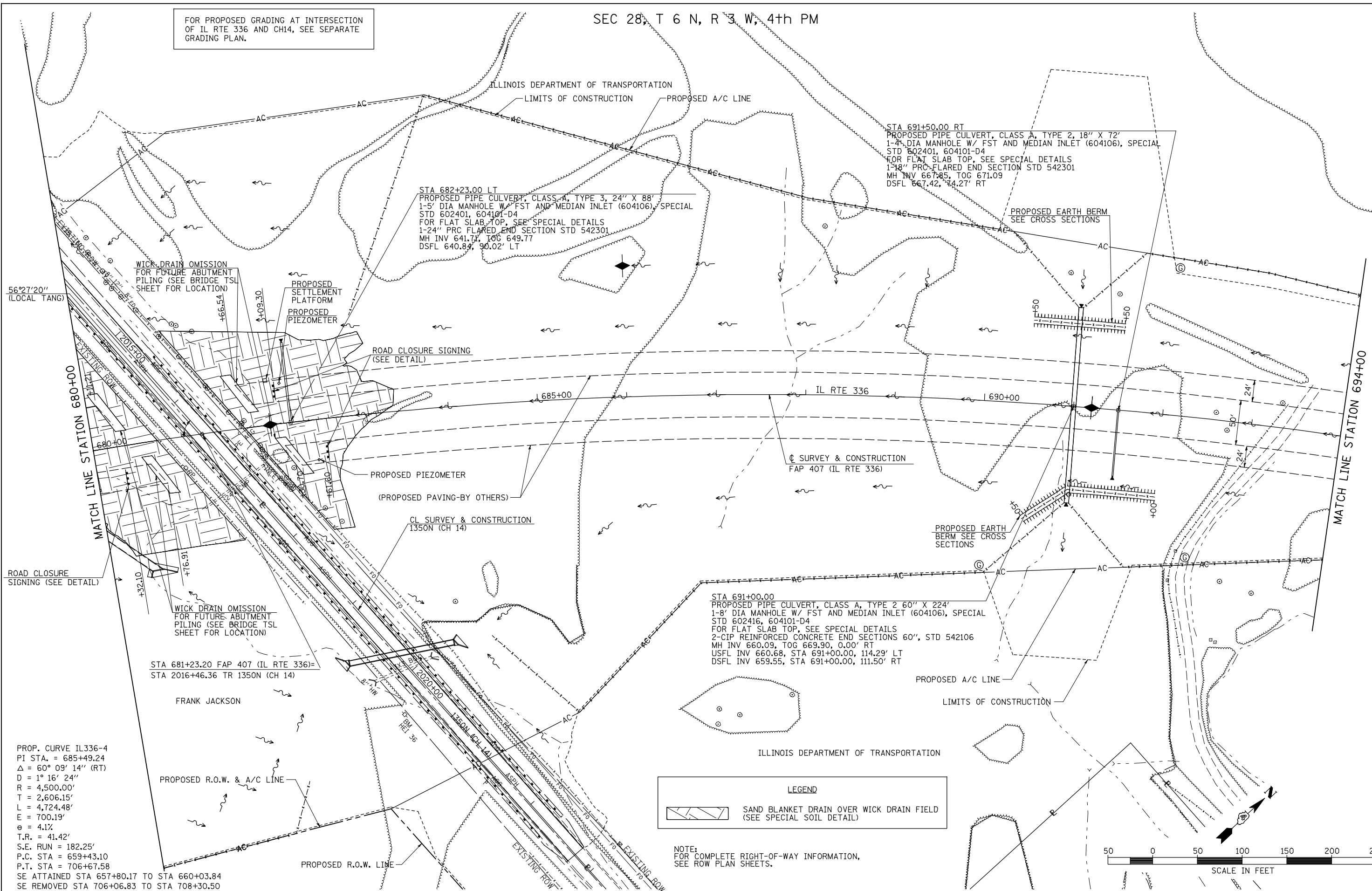
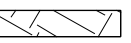


FOR PROPOSED GRADING AT INTERSECTION OF IL RTE 336 AND CH14, SEE SEPARATE GRADING PLAN.

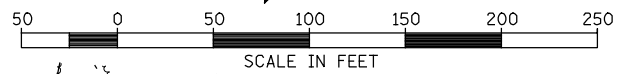
SEC 28, T 6 N, R 3 W, 4th PM



PROP. CURVE IL336-4
 PI STA. = 685+49.24
 $\Delta = 60^\circ 09' 14''$ (RT)
 $R = 1^\circ 16' 24''$
 $D = 4,500.00'$
 $T = 2,606.15'$
 $L = 4,724.48'$
 $E = 700.19'$
 $e = 4.1\%$
 $T.R. = 41.42'$
 $S.E. RUN = 182.25'$
 $P.C. STA = 659+43.10$
 $P.T. STA = 706+67.58$
 SE ATTAINED STA 657+80.17 TO STA 660+03.84
 SE REMOVED STA 706+06.83 TO STA 708+30.50

LEGEND
 SAND BLANKET DRAIN OVER WICK DRAIN FIELD (SEE SPECIAL SOIL DETAIL)

NOTE:
 FOR COMPLETE RIGHT-OF-WAY INFORMATION,
 SEE ROW PLAN SHEETS.



FILE NAME =	USER NAME = jdeen	DESIGNED - JRB	REVISED -
W:\Transportation\2891\Grading Plans\2891\011.dgn		DRAWN - RLR	REVISED -
PLOT SCALE = 1/8" = 1' / IN.		CHECKED - AWM	REVISED -
PLOT DATE = 12/12/2012		DATE - 12-12-12	REVISED -

**STATE OF ILLINOIS
 DEPARTMENT OF TRANSPORTATION**

**FAP 407 (IL RTE 336)
 GRADING & DRAINAGE PLAN & PROFILE
 STATION 680+00 TO STATION 694+00**
 SCALE: 1"=50'
 SHEET NO. 21 OF 37 SHEETS
 STA. 680+00 TO STA. 694+00

F.A.P. RTE.	SECTION	COUNTY	TOTAL SHEETS	SHEET NO.
407	(55-31A)	McDONOUGH	671	127
			CONTRACT NO. 68A42	
ILLINOIS FED. AID PROJECT				