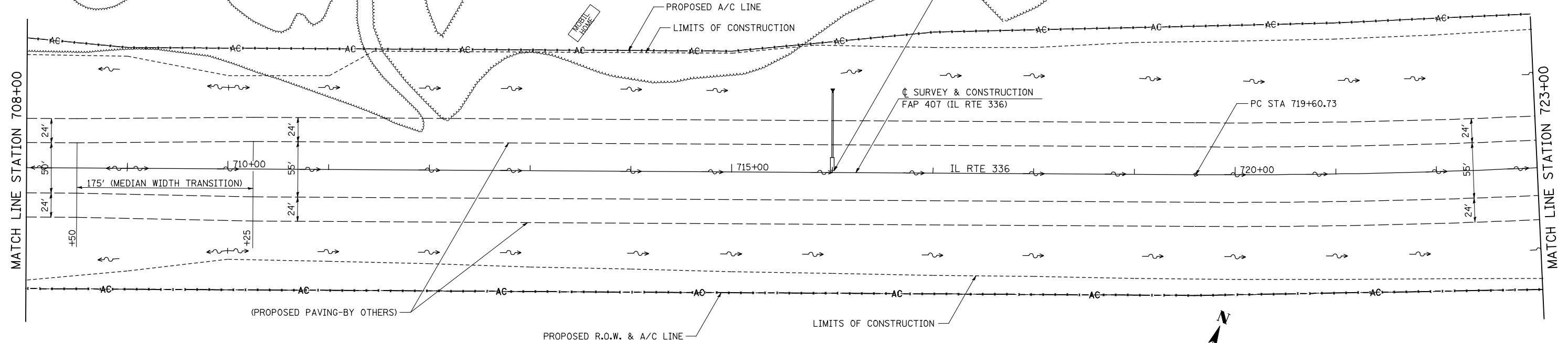


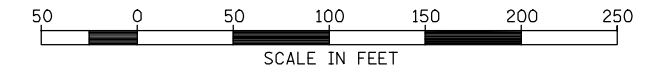
SEC 27, T 6 N, R 3 W, 4th PM  
JOHN E. & NANCY L. LAVERDIERE

STA 716+00.00 LT  
PROPOSED PIPE CULVERT, CLASS A, TYPE 1, 18" X 64'  
1-INLET BOX TYPE C STD 542511 (SPECIAL)  
SEE SPECIAL DETAIL  
1-18" PRC FLARED END, SEC STD 542301  
DITCH ELEV 697.52  
USFL 696.52, 14.08' LT  
QSFL 695.16, 79.46' LT

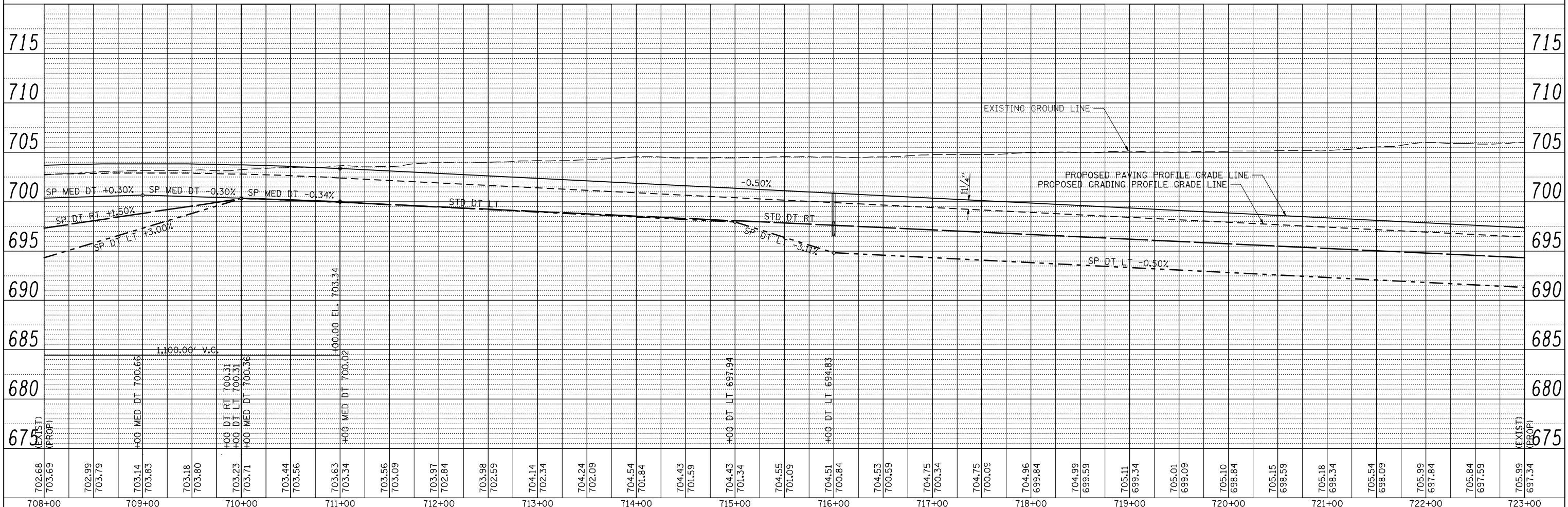
PLAN	SURVEYED	DATE
NOTE BOOK	PLOTTED	BY
NO.	CHECKED	
	ALIGNED	
	AS SHOWN	
	ON CARD	
	FILE NAME	



JOHN E. & NANCY L. LAVERDIERE



PROFILE	SURVEYED	DATE
NOTE BOOK	PLOTTED	BY
NO.	CHECKED	
	GRADES	
	STRUCTURE	
	NOTATION	



FILE NAME =	USER NAME = jdeen	DESIGNED - JRB	REVISED -
V:\Transportation\2891\Grading Plans\2891D13.dgn		DRAWN - RLR	REVISED -
PLOT SCALE = 100.00' / IN.		CHECKED - AWM	REVISED -
PLOT DATE = 12/12/2012		DATE - 12-12-12	REVISED -

STATE OF ILLINOIS  
DEPARTMENT OF TRANSPORTATION

FAP 407 (IL RTE 336)  
GRADING & DRAINAGE PLAN & PROFILE  
STA. 708+00 TO STA. 723+00

SCALE: 1"=50' SHEET NO. 25 OF 37 SHEETS STA. 708+00 TO STA. 723+00

F.A.P. RTE. 407	SECTION (55-31A)	COUNTY McDONOUGH	TOTAL SHEETS 671	SHEET NO. 131
			CONTRACT NO. 68A42	
ILLINOIS FED. AID PROJECT				