

SEC 27, T 6 N, R 3 W, 4th PM

SEC 22, T 6 N, R 3 W, 4th PM

JOHN E. & NANCY L. LAVERDIERE

STA 728+78.00 LT
 PROPOSED PIPE CULVERT, CLASS A, TYPE 1, 18" X 64'
 1-INLET BOX TYPE C STD 542511 (SPECIAL)
 SEE SPECIAL DETAIL
 1-18' PRC FLARED END SEC STD 542301
 DITCH ELEV 691.13
 DSFL 690.13, 14.08' LT
 DSFL 688.66, 75.67' LT

BARBARA HINMAN

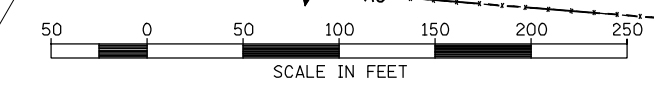
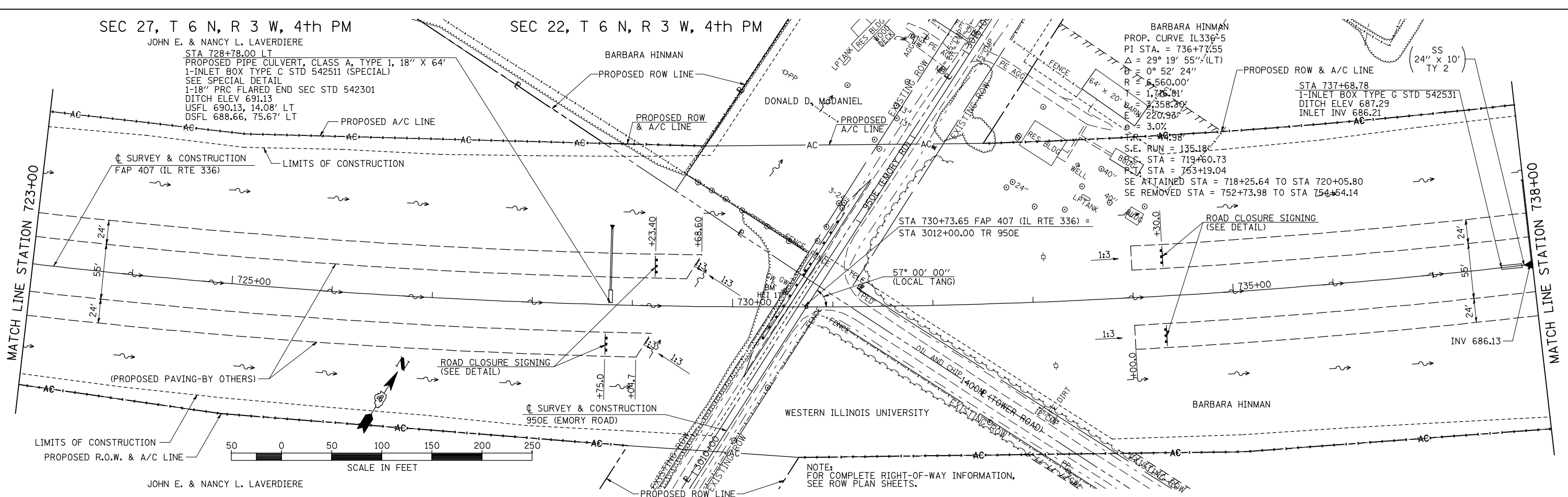
PROPOSED ROW LINE

PROPOSED A/C LINE

BARBARA HINMAN
 PROP. CURVE IL336-5
 PI STA. = 736+77.55
 $\Delta = 29^\circ 19' 55''$ (LT)
 $R = 560.00'$
 $E = 1,746.81'$
 $L = 2,358.30'$
 $E = 220.98'$
 $E = 3.07\%$
 S.E. RUN = 135.18'
 S.C. STA = 719+60.73
 STA = 753+19.04
 SE ATTAINED STA = 718+25.64 TO STA 720+05.80
 SE REMOVED STA = 752+73.98 TO STA 754+54.14

STA 737+68.78
 1-INLET BOX TYPE G STD 542531
 DITCH ELEV 687.29
 INLET INV 686.21

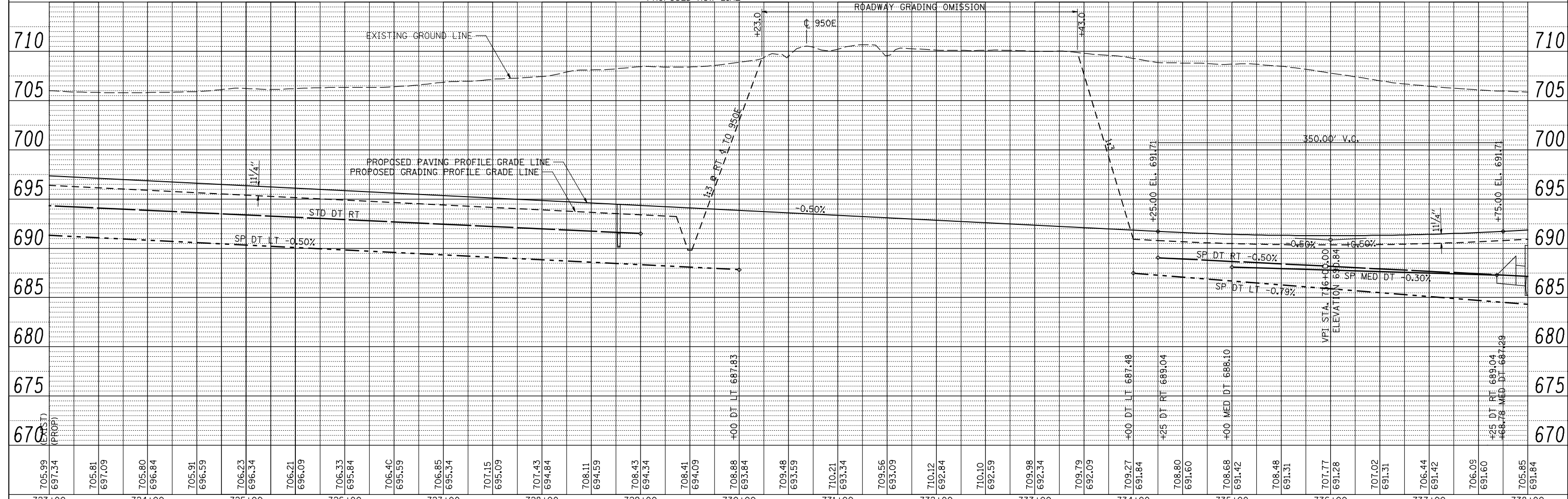
PLAN	SURVEYED	BY	DATE
	PLOTTED		
	CHECKED		
	APPROVED		
	FILE NAME		
	NO.		



JOHN E. & NANCY L. LAVERDIERE

NOTE: FOR COMPLETE RIGHT-OF-WAY INFORMATION, SEE ROW PLAN SHEETS.

PROFILE	SURVEYED	BY	DATE
	PLOTTED		
	CHECKED		
	APPROVED		
	NOTATION CHD		
	NO.		



723+00	724+00	725+00	726+00	727+00	728+00	729+00	730+00	731+00	732+00	733+00	734+00	735+00	736+00	737+00	738+00															
705.99 697.34	705.81 697.09	705.60 696.84	705.91 696.59	706.23 696.34	706.21 696.09	706.33 695.84	706.40 695.59	706.85 695.34	707.15 695.09	707.43 694.84	708.11 694.59	708.43 694.34	708.41 694.09	708.88 693.84	709.48 693.59	710.21 693.34	709.56 693.09	710.12 692.84	710.10 692.59	709.98 692.34	709.79 692.09	709.27 691.84	708.80 691.60	708.68 691.42	708.48 691.31	707.77 691.28	707.02 691.31	706.44 691.42	706.09 691.60	705.85 691.84

STATE OF ILLINOIS
 DEPARTMENT OF TRANSPORTATION

FAP 407 (IL RTE 336)
 GRADING & DRAINAGE PLAN & PROFILE
 STA 723+00 TO STA 738+00

F.A.P. RTE.	SECTION	COUNTY	TOTAL SHEETS	SHEET NO.
407	(55-31A)	McDONOUGH	671	132
CONTRACT NO. 68A42			ILLINOIS FED. AID PROJECT	

SCALE: 1"=50' SHEET NO. 26 OF 37 SHEETS STA. 723+00 TO STA. 738+00

FILE NAME =
 USER NAME = jdeen
 DESIGNED - JRB
 DRAWN - RLR
 CHECKED - AWM
 DATE - 12-12-12

REVISIONS:
 REVISED -
 REVISED -
 REVISED -
 REVISED -