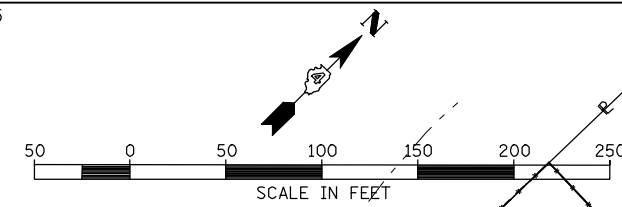


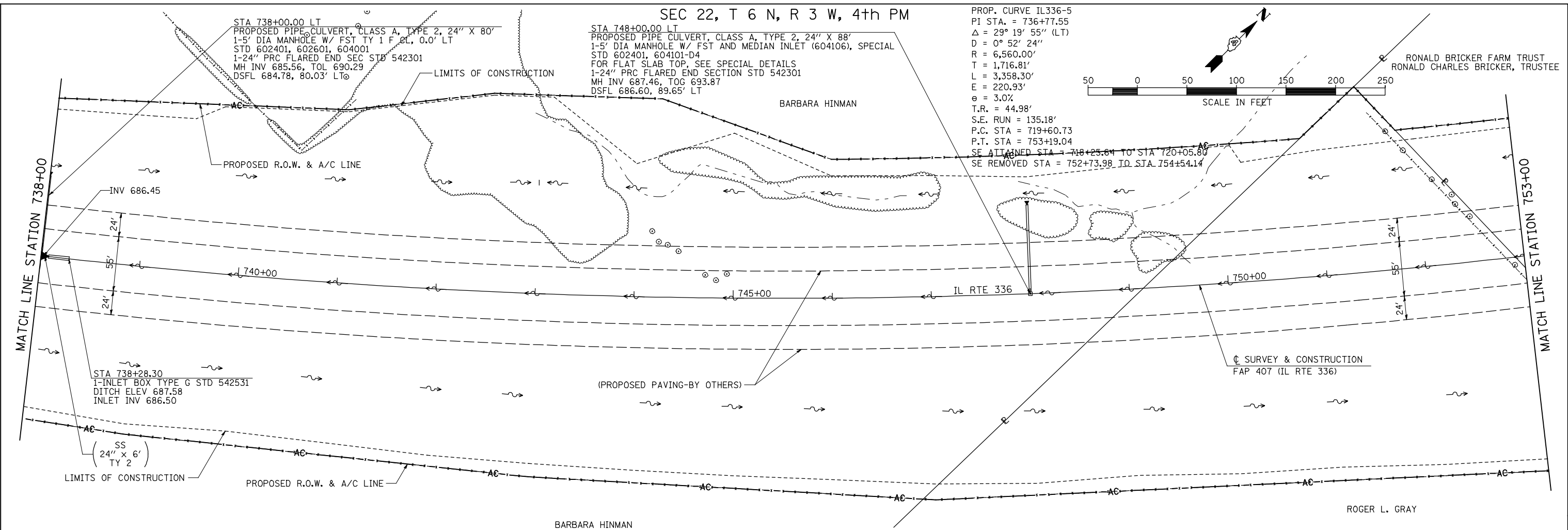
SEC 22, T 6 N, R 3 W, 4th PM

PROP. CURVE IL336-5  
 PI STA. = 736+77.55  
 $\Delta = 29^\circ 19' 55''$  (LT)  
 $D = 0^\circ 52' 24''$   
 $R = 6,560.00'$   
 $T = 1,716.81'$   
 $L = 3,358.30'$   
 $E = 220.93'$   
 $e = 3.0\%$   
 $T.R. = 44.98'$   
 $S.E. RUN = 135.18'$   
 $P.C. STA = 719+60.73$   
 $P.T. STA = 753+19.04$   
 $SE ATTAINED STA = 718+25.64$  TO  $STA 720+05.80$   
 $SE REMOVED STA = 752+73.98$  TO  $STA 754+54.14$

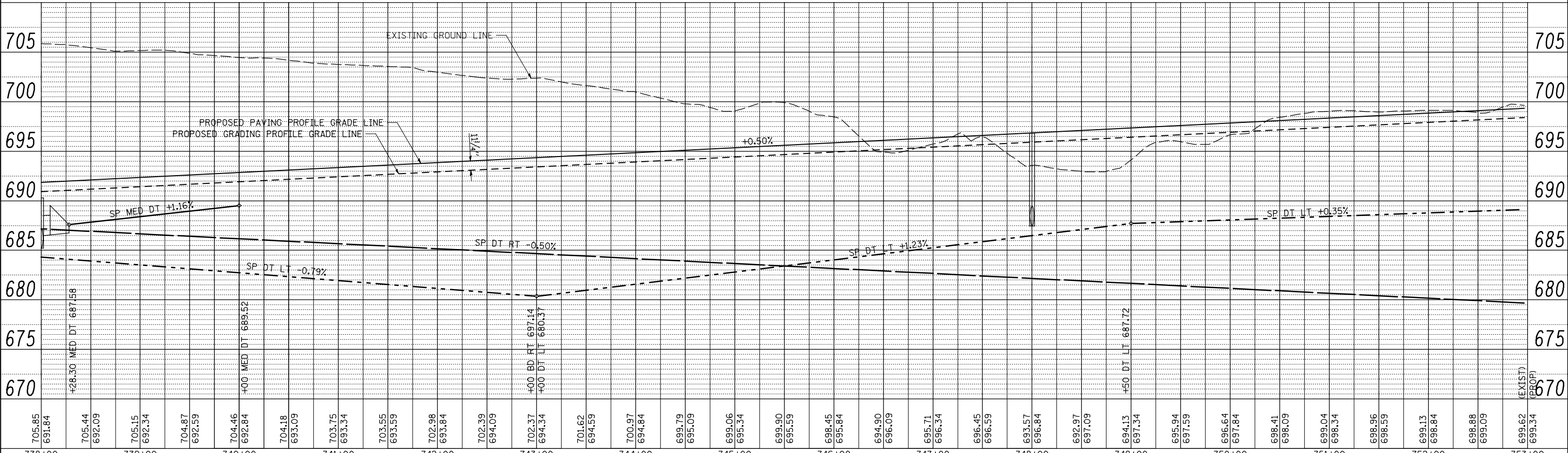


RONALD BRICKER FARM TRUST  
 RONALD CHARLES BRICKER, TRUSTEE

PLAN	SURVEYED	DATE
NOTE BOOK	PLOTTED	BY
NO.	CHECKED	
	ALIGNED	
	FILE NAME	



PROFILE	SURVEYED	DATE
NOTE BOOK	PLOTTED	BY
NO.	CHECKED	
	GRADES	
	STRUCTURE	
	NOTATION	



FILE NAME =	USER NAME = jden	DESIGNED - JRB	REVISED -
V:\Transportation\2891\Grading Plans\2891D15.dgn		DRAWN - RLR	REVISED -
PLOT SCALE = 100.00' / IN.		CHECKED - AWM	REVISED -
PLOT DATE = 12/12/2012		DATE - 12-12-12	REVISED -

STATE OF ILLINOIS  
 DEPARTMENT OF TRANSPORTATION

FAP 407 (IL RTE 336)  
 GRADING & DRAINAGE PLAN & PROFILE  
 STA 738+00 TO STA 753+00

SCALE: 1"=50' SHEET NO. 27 OF 37 SHEETS STA. 738+00 TO STA. 753+00

F.A.P. RTE.	SECTION	COUNTY	TOTAL SHEETS	SHEET NO.
407	(55-3)A	McDONOUGH	671	133
			CONTRACT NO. 68A42	

ILLINOIS FED. AID PROJECT