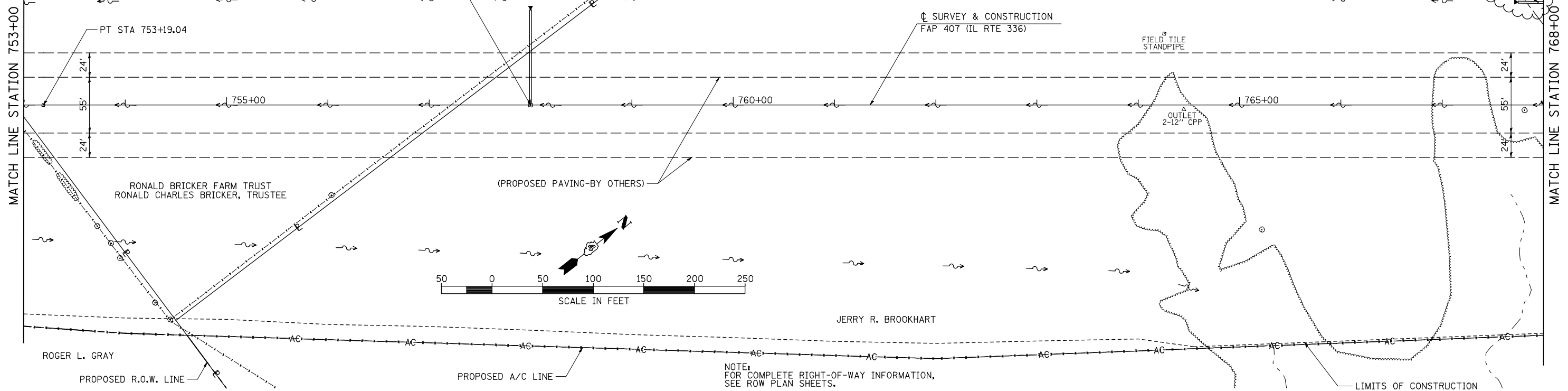


RONALD BRICKER FARM TRUST
RONALD CHARLES BRICKER, TRUSTEE

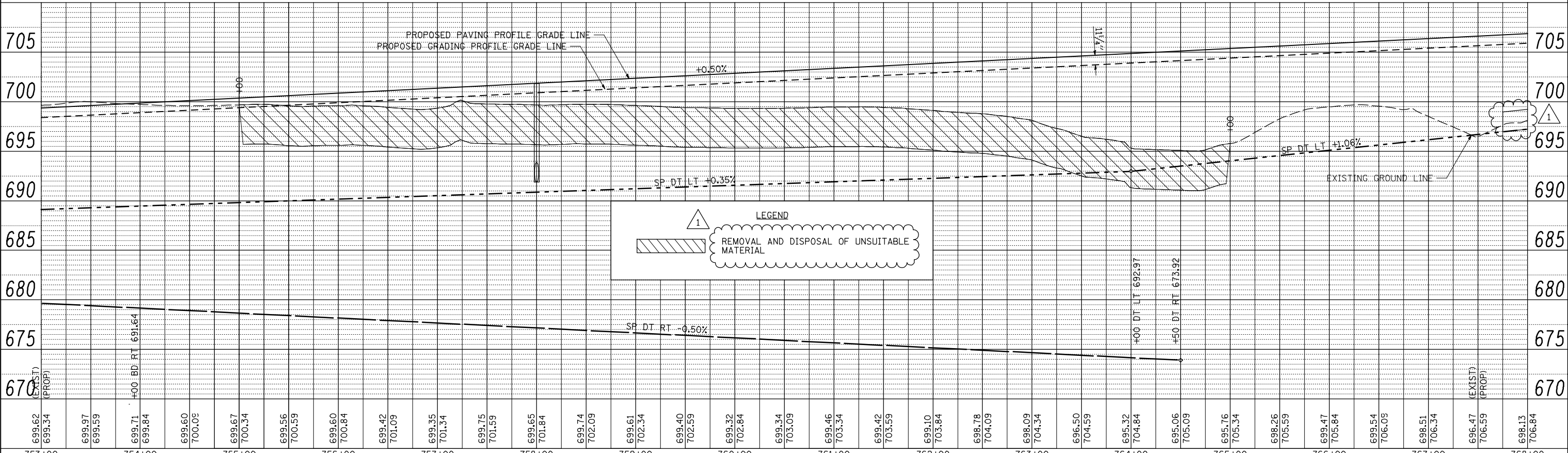
STA 758+00.00 LT
PROPOSED PIPE CULVERT, CLASS A, TYPE 2, 24" X 96'
1-5' DIA MANHOLE W/ FST AND MEDIAN INLET (604106), SPECIAL
STD 602401, 604101-D4
FOR FLAT SLAB TOP, SEE SPECIAL DETAILS
1-24" PRC FLARED END SECTION STD 542301
MH INV 691.87, TOG 698.87
DSFL 690.96, 93.79' LT

STA 767+95.00, 101.3' LT
PROPOSED PIPE CULVERT, CLASS D, TYPE 1, 24" X 40'
2-METAL END SECTION 24"
USFL 697.37, STA 768+15, 101.0' LT
DSFL 696.95, STA 767+75, 101.6' LT

DATE	
BY	
PLAN	
SURVEYED	
PLOTTED	
GRADES CHECKED	
STRUCTURE NOTATIONS CHKD	
NOTE BOOK NO.	
CHECKED BY	
DATE	



DATE	
BY	
PROFILE	
SURVEYED	
PLOTTED	
GRADES CHECKED	
STRUCTURE NOTATIONS CHKD	
NOTE BOOK NO.	
CHECKED BY	
DATE	



FILE NAME =	USER NAME = jdeen	DESIGNED - JRB	REVISED - 02/07/2013
V:\Transportation\2891\Grading Plans\2891D16.dgn		DRAWN - RLR	REVISED -
PLOT SCALE = 1/8" = 1' / IN.		CHECKED - AWM	REVISED -
PLOT DATE = 2/7/2013		DATE - 12-12-12	REVISED -

STATE OF ILLINOIS
DEPARTMENT OF TRANSPORTATION

FAP 407 (IL RTE 336)
GRADING & DRAINAGE PLAN & PROFILE
STA 753+00 TO STA 768+00

F.A.P. RTE. 407	SECTION (55-31A)	COUNTY McDONOUGH	TOTAL SHEETS 671	SHEET NO. 134
SCALE: 1"=50'			CONTRACT NO. 68A42	
SHEET NO. 28 OF 37 SHEETS			ILLINOIS FED. AID PROJECT	