

SEC 22, T 6 N, R 3 W, 4th PM

JERRY R. BROOKHART

SEC 23, T 6 N, R 3 W, 4th PM

PROPOSED R.O.W. & A/C LINE

STA 770+00.00 LT  
 PROPOSED PIPE CULVERT, CLASS A, TYPE 2, 24" X 88'  
 1-5' DIA MANHOLE W/ FST AND MEDIAN INLET (604106), SPECIAL  
 STD 602401, 604101-D4  
 FOR FLAT SLAB TOP, SEE SPECIAL DETAILS  
 1-24" PRC FLARED END SECTION STD 542301  
 MH INV 700.28, TOG 704.87  
 DSFL 699.43, 86.27' LT

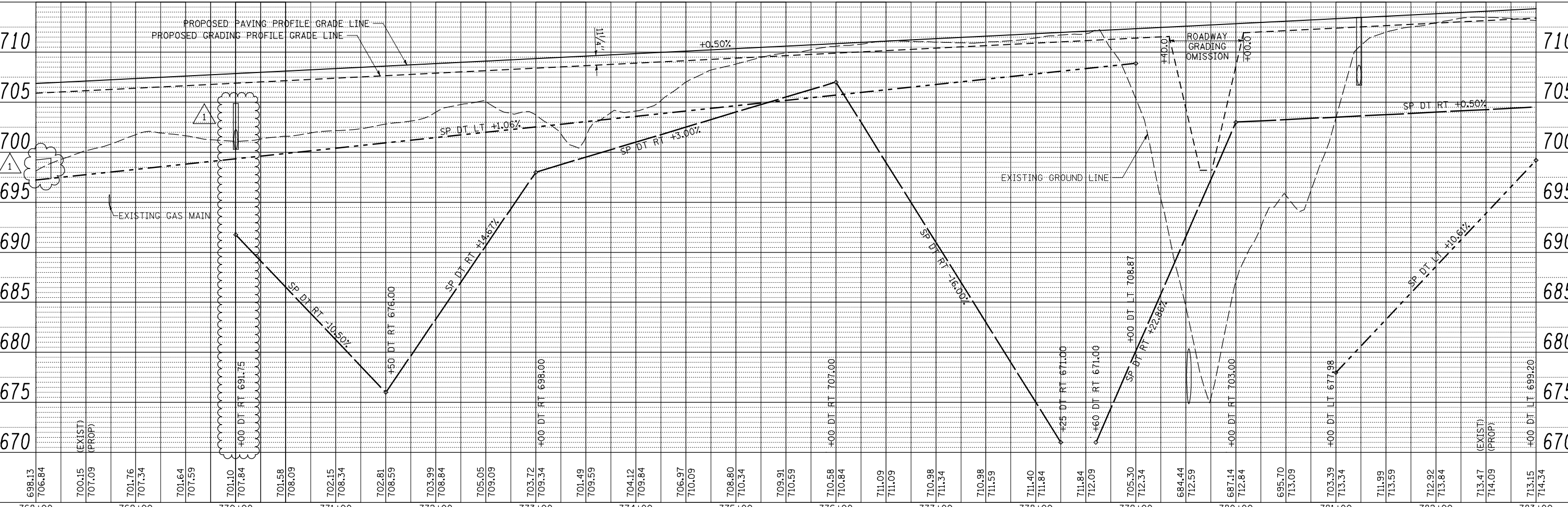
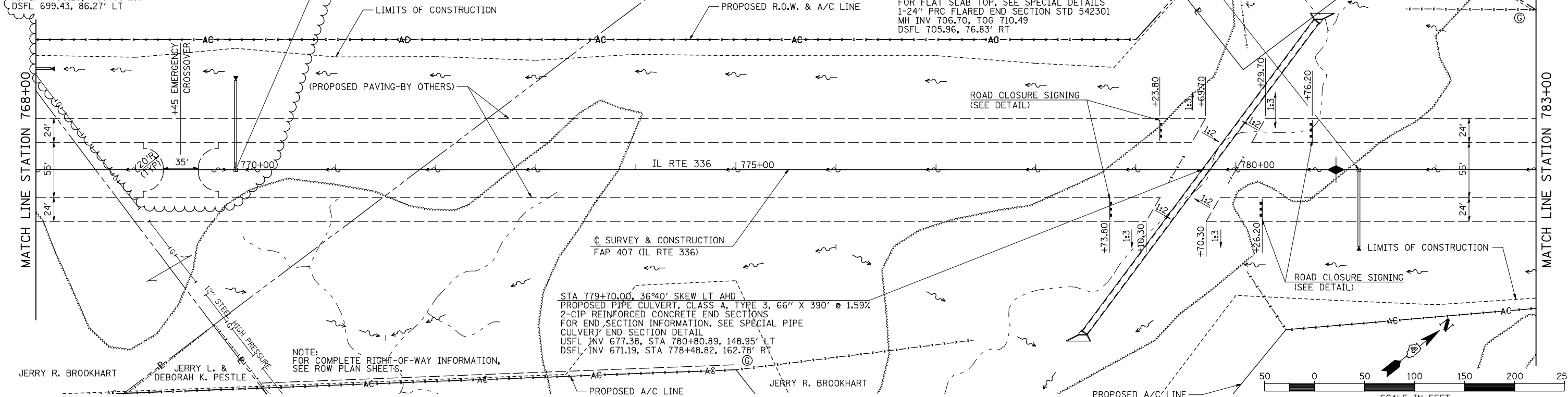
STA 781+23.00 RT  
 PROPOSED PIPE CULVERT, CLASS A, TYPE 2, 24" X 80'  
 1-5' DIA MANHOLE W/ FST AND MEDIAN INLET (604106), SPECIAL  
 STD 602401, 604101-D4  
 FOR FLAT SLAB TOP, SEE SPECIAL DETAILS  
 1-24" PRC FLARED END SECTION STD 542301  
 MH INV 706.70, TOG 710.49  
 DSFL 705.96, 76.83' RT

STA 779+70.00, 36°40' SKEW LT AHD  
 PROPOSED PIPE CULVERT, CLASS A, TYPE 3, 66" X 390' @ 1.59%  
 2-CIP REINFORCED CONCRETE END SECTIONS  
 FOR END SECTION INFORMATION, SEE SPECIAL PIPE  
 CULVERT END SECTION DETAIL  
 USFL INV 677.38, STA 780+80.89, 148.95' LT  
 DSFL INV 671.19, STA 778+48.82, 162.78' RT

NOTE:  
 FOR COMPLETE RIGHT-OF-WAY INFORMATION,  
 SEE ROW PLAN SHEETS.

|      |          |      |
|------|----------|------|
| PLAN | SURVEYED | DATE |
|      | PLOTTED  |      |
|      | CHECKED  |      |
|      | BY       |      |
|      | NO.      |      |

|         |          |      |
|---------|----------|------|
| PROFILE | SURVEYED | DATE |
|         | PLOTTED  |      |
|         | CHECKED  |      |
|         | BY       |      |
|         | NO.      |      |



|  |                   |                 |                      |
|--|-------------------|-----------------|----------------------|
| FILE NAME =                                      | USER NAME = jdeen | DESIGNED - JRB  | REVISED - 02/07/2013 |
| V:\transportation\2891\Grading Plans\2891017.dgn |                   | DRAWN - RLR     | REVISED -            |
| PLOT SCALE = 100.00' / IN.                       |                   | CHECKED - AWM   | REVISED -            |
| PLOT DATE = 2/7/2013                             |                   | DATE - 12-12-12 | REVISED -            |

STATE OF ILLINOIS  
 DEPARTMENT OF TRANSPORTATION

FAP 407 (IL RTE 336)  
 GRADING & DRAINAGE PLAN & PROFILE  
 STA 768+00 TO STA 783+00

SCALE: 1"=50' SHEET NO. 29 OF 37 SHEETS STA. 768+00 TO STA. 783+00

|                           |          |           |              |           |
|---------------------------|----------|-----------|--------------|-----------|
| F.A.P. RTE.               | SECTION  | COUNTY    | TOTAL SHEETS | SHEET NO. |
| 407                       | (55-31A) | McDONOUGH | 671          | 135       |
|                           |          |           | CONTRACT NO. | 68A42     |
| ILLINOIS FED. AID PROJECT |          |           |              |           |