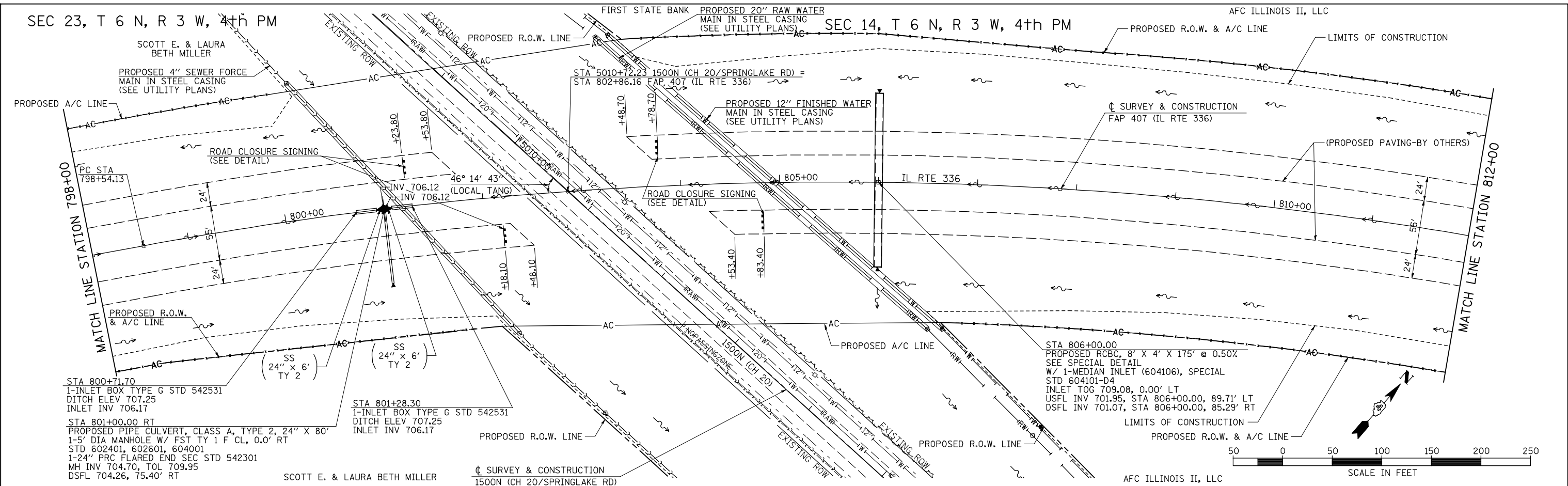


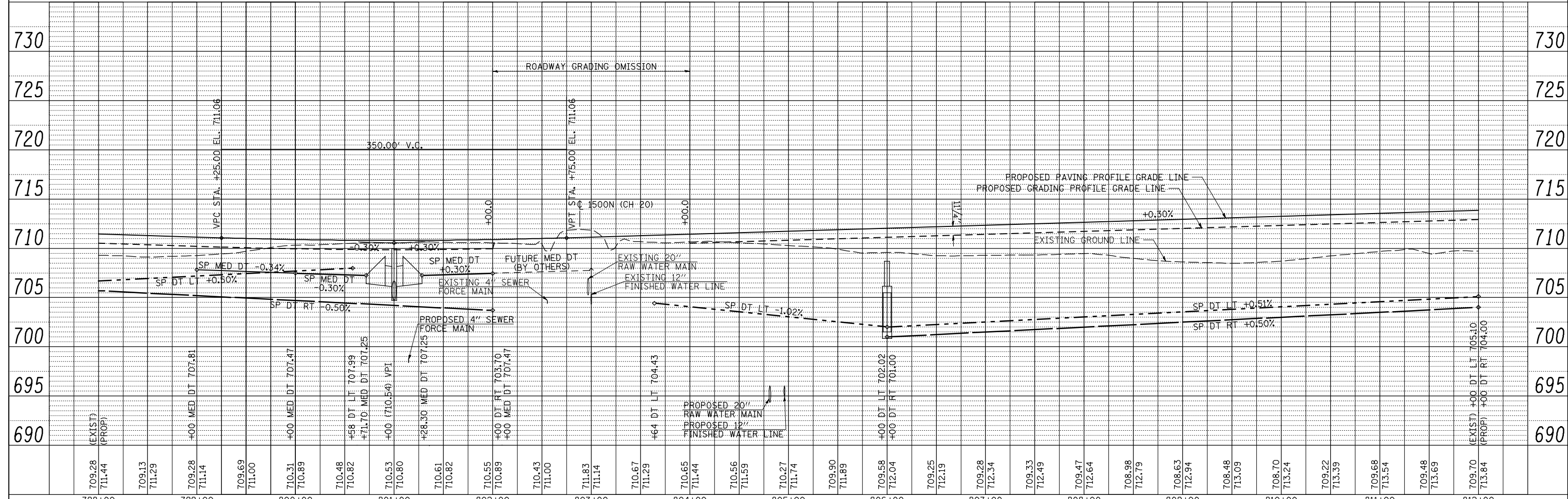
SEC 23, T 6 N, R 3 W, 4th PM

SEC 14, T 6 N, R 3 W, 4th PM

PLAN	SURVEYED	DATE
NOTE BOOK	PLOTTED	BY
NO.	CHECKED	
	ALLOWED	
	DATE	
	FILE NAME	



PROFILE	SURVEYED	DATE
NOTE BOOK	PLOTTED	BY
NO.	CHECKED	
	ALLOWED	
	FILE NAME	



FILE NAME =	USER NAME = jdeen	DESIGNED - JRB	REVISED -	STATE OF ILLINOIS DEPARTMENT OF TRANSPORTATION FAP 407 (IL RTE 336) GRADING & DRAINAGE PLAN & PROFILE STA 798+00 TO STA 812+00	F.A. RTE. 407	SECTION (55-31A)	COUNTY McDONOUGH	TOTAL SHEETS 671	SHEET NO. 137
V:\Transportation\2891\Grading Plans\2891D19.dgn	DRAWN - RLR	REVISOR -	REVISOR -		CONTRACT NO. 68A42				
PLOT SCALE = 1/8" = 1' / IN.	CHECKED - AWM	REVISOR -	REVISOR -		ILLINOIS FED. AID PROJECT				
PLOT DATE = 12/12/2012	DATE - 12-12-12	REVISOR -	REVISOR -						