

PLAN	SURVEYED	DATE
	PLOTTED	BY
	CHECKED	
	ALIGNED	
	AS SHOWN	
	NO. OF SHEETS	
	DATE	

PROFILE	SURVEYED	DATE
	GRADES CHECKED	BY
	STRUCTURE	
	NOTATION	
	NO. OF SHEETS	
	DATE	

SEC 14, T 6 N, R 3 W, 4th PM

AFC ILLINOIS II, LLC

CL SURVEY & CONSTRUCTION  
FAP 407 (IL RTE 336)

STA 839+75.00  
PROPOSED PIPE CULVERT, CLASS A, TYPE 2, 24" X 72"  
1-24" PRC FLARED END SEC STD 542301  
USFL 702.49, 72.66' LT  
DSFL 702.28, 2.5' LT

STA 839+46.00  
1-INLET BOX TYPE G STD 542531  
DITCH ELEV 703.44  
INLET INV 702.36

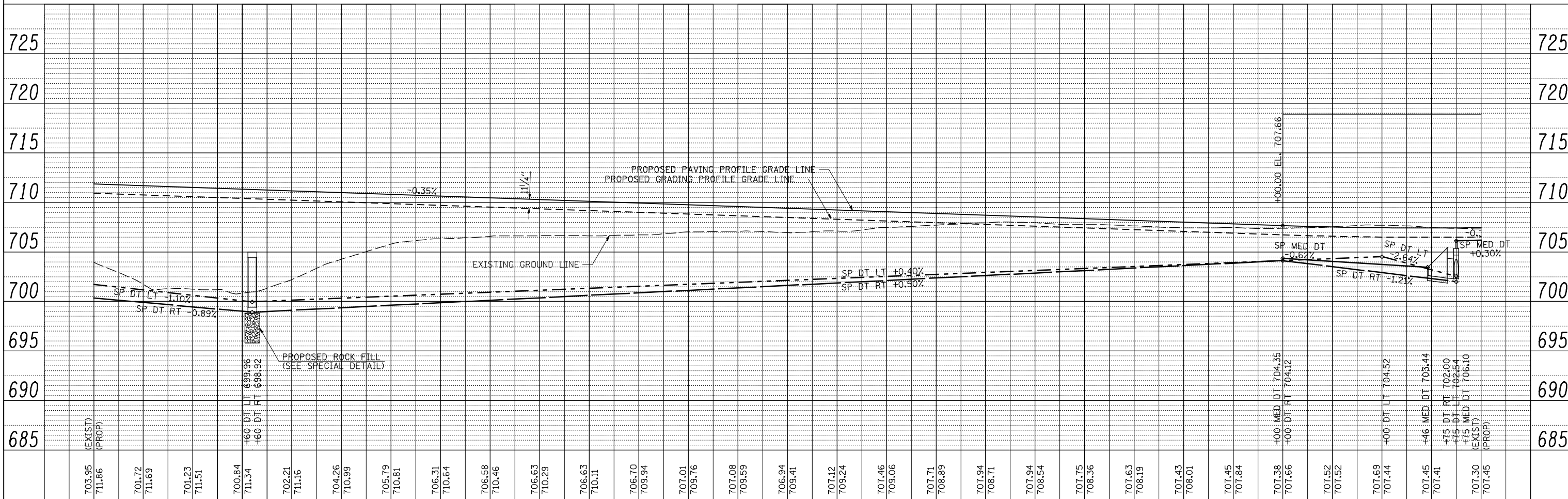
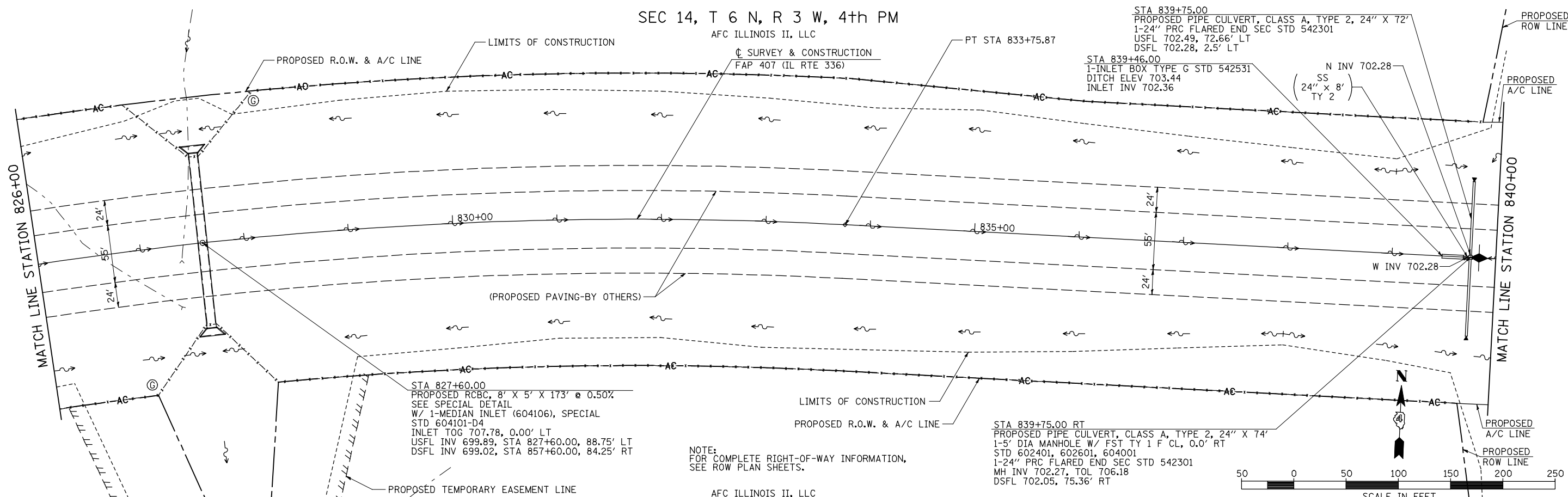
N INV 702.28  
SS  
(24" x 8'  
TY 2

STA 839+75.00 RT  
PROPOSED PIPE CULVERT, CLASS A, TYPE 2, 24" X 74"  
1-5' DIA MANHOLE W/ FST TY 1 F CL, 0.0' RT  
STD 602401, 602601, 604001  
1-24" PRC FLARED END SEC STD 542301  
MH INV 702.27, TOL 706.18  
DSFL 702.05, 75.36' RT

STA 827+60.00  
PROPOSED RCBC, 8' X 5' X 173' @ 0.50%  
SEE SPECIAL DETAIL  
W/ 1-MEDIAN INLET (604106), SPECIAL  
STD 604101-D4  
INLET TOG 707.78, 0.00' LT  
USFL INV 699.89, STA 827+60.00, 88.75' LT  
DSFL INV 699.02, STA 857+60.00, 84.25' RT

NOTE:  
FOR COMPLETE RIGHT-OF-WAY INFORMATION,  
SEE ROW PLAN SHEETS.

AFC ILLINOIS II, LLC



FILE NAME =	USER NAME = jdeen	DESIGNED - JRB	REVISED -	F.A.P. RTE. 407	SECTION (55-31A)	COUNTY McDONOUGH	TOTAL SHEETS 671	SHEET NO. 139
V:\Transportation\2891\Grading Plans\2891D21.dgn		DRAWN - RLR	REVISED -	CONTRACT NO. 68A42				
PLOT SCALE = 100.00' / IN.		CHECKED - AWM	REVISED -	ILLINOIS FED. AID PROJECT				
PLOT DATE = 12/12/2012		DATE - 12-12-12	REVISED -					

STATE OF ILLINOIS  
DEPARTMENT OF TRANSPORTATION

FAP 407 (IL RTE 336)  
GRADING & DRAINAGE PLAN & PROFILE  
STA 826+00 TO STA 840+00

SCALE: 1"=50' SHEET NO. 33 OF 37 SHEETS STA. 826+00 TO STA. 840+00