

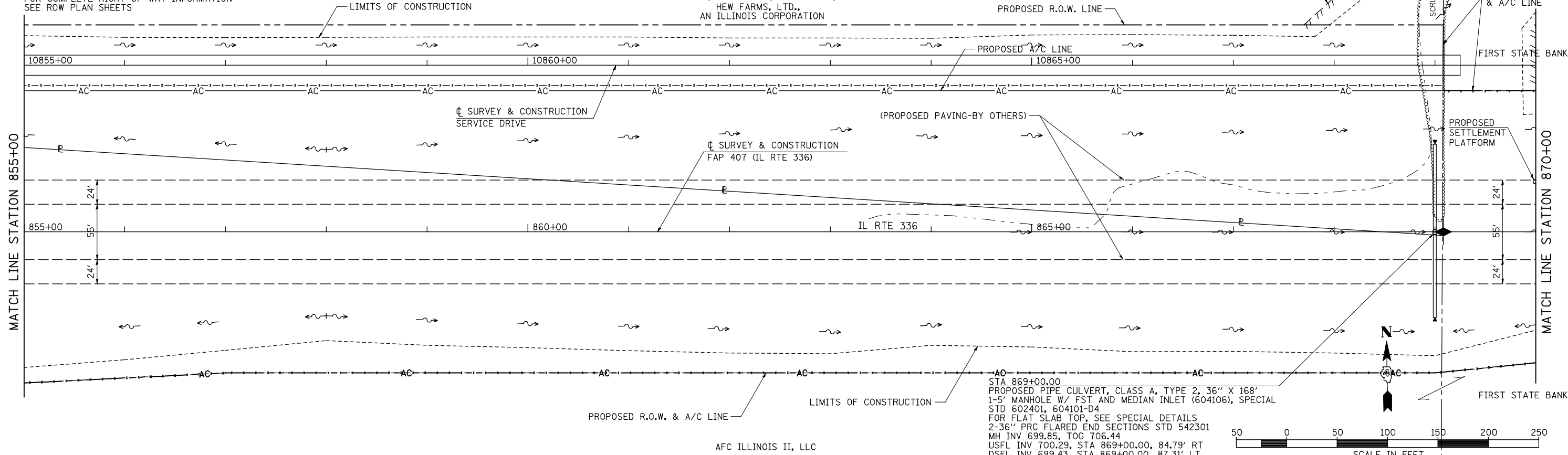
NOTE:
FOR COMPLETE RIGHT OF WAY INFORMATION
SEE ROW PLAN SHEETS

SEC 13, T 6 N, R 3 W, 4th PM

HEW FARMS, LTD.,
AN ILLINOIS CORPORATION

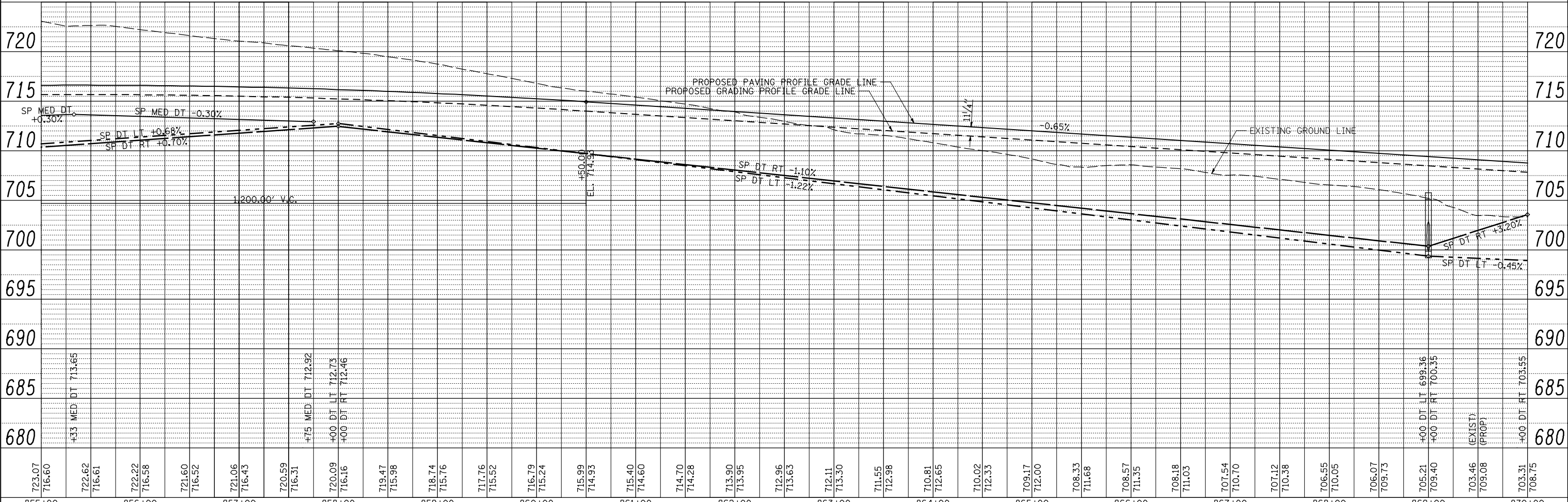
PROPOSED TEMPORARY EASEMENT LINE
PROPOSED R.O.W. LINE
PROPOSED A/C LINE
PROPOSED R.O.W. & A/C LINE
FIRST STATE BANK

PLAN	SURVEYED	DATE
	PLOTTED	
	CHECKED	
	ALIGNED	
	DESIGNED	
	FILED	
	NO.	



STA 869+00.00
PROPOSED PIPE CULVERT, CLASS A, TYPE 2, 36" X 168"
1-5' MANHOLE W/ FST AND MEDIAN INLET (604106), SPECIAL
STD 602401, 604101-D4
FOR FLAT SLAB TOP, SEE SPECIAL DETAILS
2-36" PRC FLARED END SECTIONS STD 542301
MH INV 699.85, TOG 706.44
USFL INV 700.29, STA 869+00.00, 84.79' RT
DSFL INV 699.43, STA 869+00.00, 87.31' LT

PROFILE	SURVEYED	DATE
	PLOTTED	
	CHECKED	
	GRADES	
	STRUCTURE	
	NOTATION	
	CHRD	
	NO.	



723.07	716.60	722.62	716.61	722.22	716.58	721.60	716.52	721.06	716.43	720.59	716.31	720.09	716.16	719.47	715.98	718.74	715.76	717.76	715.52	716.79	715.24	715.99	714.93	715.40	714.60	714.70	714.28	713.90	713.95	712.96	713.63	712.11	713.30	711.55	712.98	710.81	712.65	710.02	712.33	709.17	712.00	708.33	711.68	708.57	711.35	708.18	711.03	707.54	710.70	707.12	710.38	706.55	710.05	706.07	709.73	705.21	709.40	703.46	709.08	703.31	708.75
855+00		856+00		857+00		858+00		859+00		860+00		861+00		862+00		863+00		864+00		865+00		866+00		867+00		868+00		869+00		870+00																															

STATE OF ILLINOIS
DEPARTMENT OF TRANSPORTATION

FAP 407 (IL RTE 336)
GRADING & DRAINAGE PLAN & PROFILE
STA 855+00 TO STA 870+00

F.A.P. RTE.	SECTION	COUNTY	TOTAL SHEETS	SHEET NO.
407	(55-31A)	McDONOUGH	671	141
CONTRACT NO. 68A42			ILLINOIS FED. AID PROJECT	

SCALE: 1"=50' SHEET NO. 35 OF 37 SHEETS STA. 855+00 TO STA. 870+00

FILE NAME =
V:\Transportation\2891\Grading Plans\2891D23.dgn

USER NAME = jdeen	DESIGNED - JRB	REVISED -
PLOT SCALE = 100.00' / IN.	DRAWN - RLR	REVISED -
PLOT DATE = 12/12/2012	CHECKED - AWM	REVISED -
	DATE - 12-12-12	REVISED -