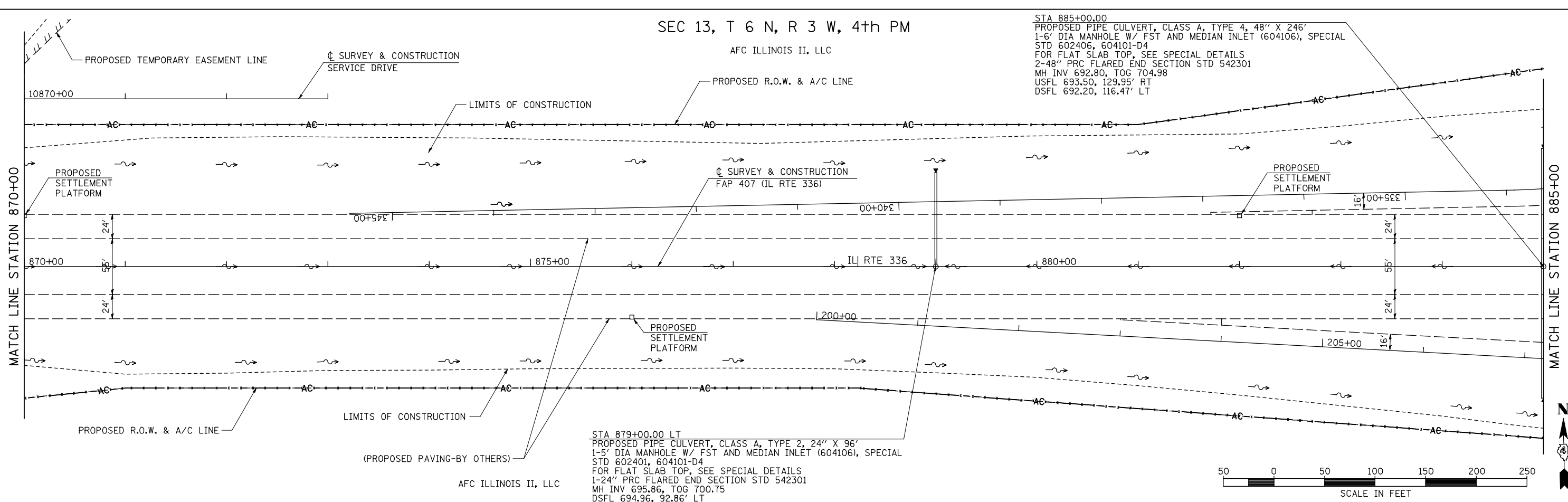


SEC 13, T 6 N, R 3 W, 4th PM

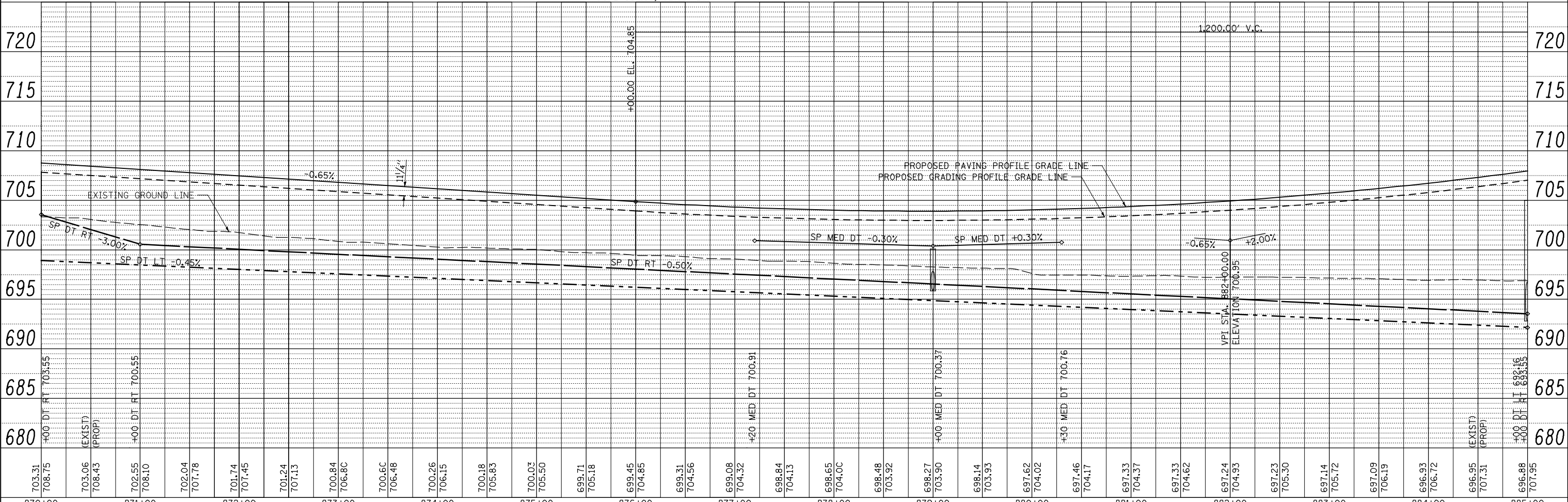
AFC ILLINOIS II, LLC

STA 885+00.00
 PROPOSED PIPE CULVERT, CLASS A, TYPE 4, 48" X 246'
 1-6' DIA MANHOLE W/ FST AND MEDIAN INLET (604106), SPECIAL
 STD 602406, 604101-D4
 FOR FLAT SLAB TOP, SEE SPECIAL DETAILS
 2-48" PRC FLARED END SECTION STD 542301
 MH INV 692.80, TOG 704.98
 USFL 693.50, 129.95' RT
 DSFL 692.20, 116.47' LT

PLAN	SURVEYED	DATE
NOTE BOOK	PLOTTED	BY
NO.	CHECKED	
	ALIGNED	
	AS SHOWN	
	ON FILE	
	NO.	



PROFILE	SURVEYED	DATE
NOTE BOOK	PLOTTED	BY
NO.	CHECKED	
	GRADES	
	STRUCTURE	
	NOTATION	
	CHRD	



FILE NAME =	USER NAME = jdeen	DESIGNED - JRB	REVISED -
V:\Transportation\2891\Grading Plans\2891D24.dgn		DRAWN - RLR	REVISED -
PLOT SCALE = 1/80.00' / IN.		CHECKED - AWM	REVISED -
PLOT DATE = 12/12/2012		DATE - 12-12-12	REVISED -

STATE OF ILLINOIS
 DEPARTMENT OF TRANSPORTATION

FAP 407 (IL RTE 336)
 GRADING & DRAINAGE PLAN & PROFILE
 STA 870+00 TO STA 885+00

SCALE: 1"=50' SHEET NO. 36 OF 37 SHEETS STA. 870+00 TO STA. 885+00

F.A.P. RTE.	SECTION	COUNTY	TOTAL SHEETS	SHEET NO.
407	(55-31A)	McDONOUGH	671	142
			CONTRACT NO. 68A42	
ILLINOIS FED. AID PROJECT				