

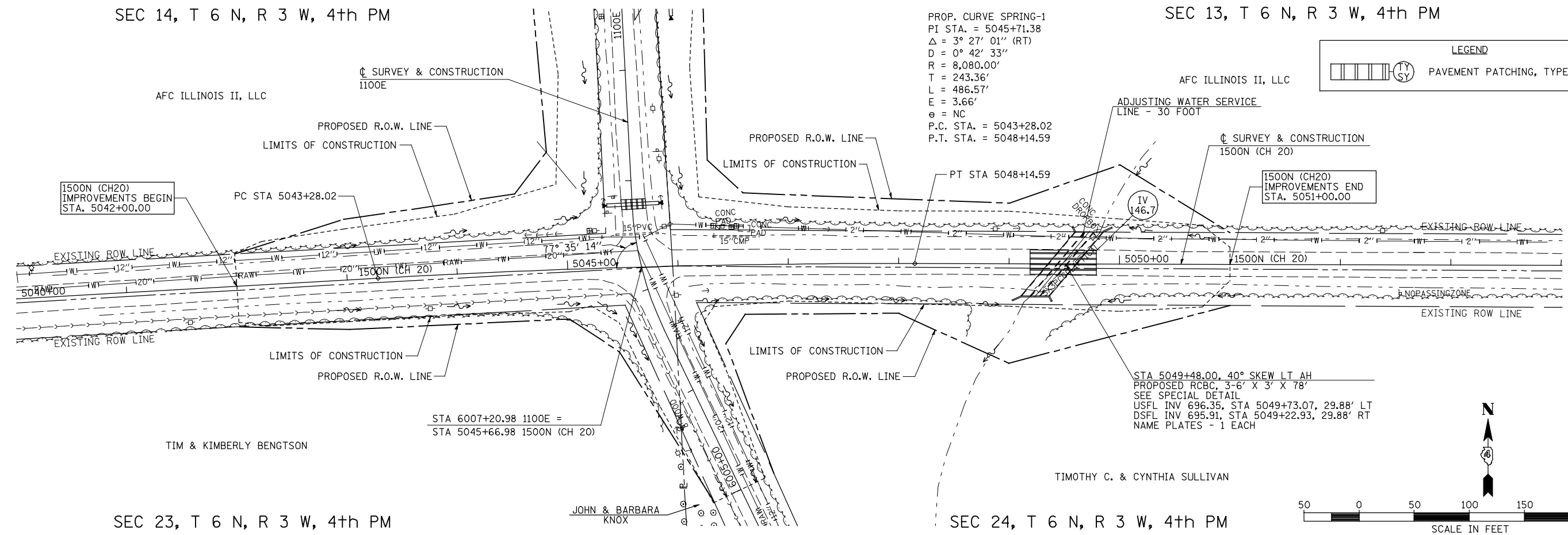
SEC 14, T 6 N, R 3 W, 4th PM

SEC 13, T 6 N, R 3 W, 4th PM

PROP. CURVE SPRING-1  
 PI STA. = 5045+71.38  
 $\Delta = 3^\circ 27' 01''$  (RT)  
 $D = 0^\circ 42' 33''$   
 $R = 8,080.00'$   
 $T = 243.36'$   
 $L = 486.57'$   
 $E = 3.66'$   
 $\theta = NC$   
 P.C. STA. = 5043+28.02  
 P.T. STA. = 5048+14.59

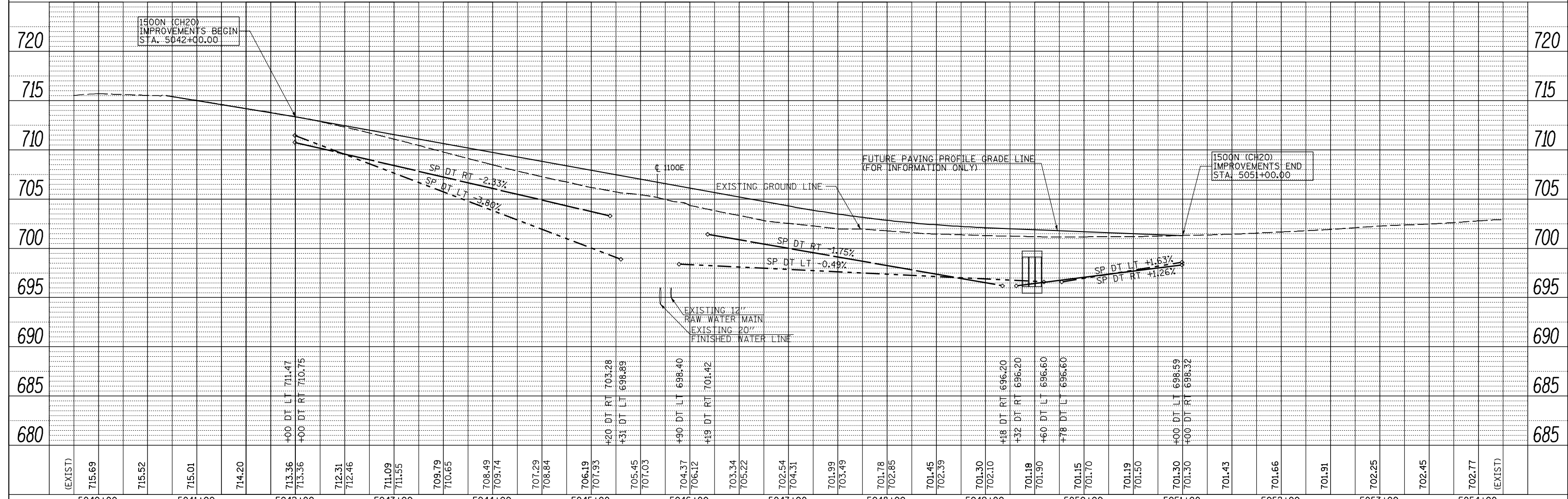
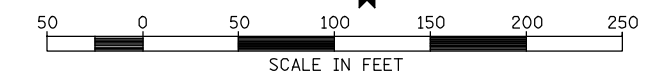
**LEGEND**

PAVEMENT PATCHING, TYPE, SQ YD



SEC 23, T 6 N, R 3 W, 4th PM

SEC 24, T 6 N, R 3 W, 4th PM



PLAN

DATE	
BY	
SURVEYED	
PLOTTED	
CHECKED	
NOTED	
NO. BOOK	
NO.	

PROFILE

DATE	
BY	
SURVEYED	
PLOTTED	
CHECKED	
NOTED	
NO. BOOK	
NO.	

FILE NAME =	USER NAME = jdeen	DESIGNED - JRB	REVISED -	<b>STATE OF ILLINOIS</b> <b>DEPARTMENT OF TRANSPORTATION</b> <b>FAP 407 (IL RTE 336)</b> <b>GRADING &amp; DRAINAGE PLAN &amp; PROFILE - 1500N (CH 20)</b> <b>STA. 5042+00 TO STA. 5051+00</b>		F.A.P. RTE. 407	SECTION (55-31A)	COUNTY MCDONOUGH	TOTAL SHEETS 671	SHEET NO. 149
vs:\transportation\2891\grading plans\2891D34(CH20).dgn	PLOT SCALE = 100.0000' / IN.	DRAWN - RLR	REVISED -			CONTRACT NO. 68A42				
PLOT DATE = 12/12/2012	DATE - 12-12-12	CHECKED - AWM	REVISED -			ILLINOIS FED. AID PROJECT				
		DATE - 12-12-12	REVISED -							

SCALE: 1"=50' SHEET NO. 6 OF 23 SHEETS STA. 5042+00 TO STA. 5051+00