

PROP. CURVE 1100E-1
 PI STA. = 6001+60.99
 $\Delta = 2^\circ 43' 51''$ (LT)
 $D = 0^\circ 50' 54''$
 $R = 6,754.04'$
 $T = 160.99'$
 $L = 321.91'$
 $E = 1.92'$
 $e = NC$
 P.C. STA. = 6000+00.00
 P.T. STA. = 6003+21.91

PROP. CURVE 1100E-2
 PI STA. = 6007+19.89
 $\Delta = 22^\circ 41' 11''$ (RT)
 $D = 19^\circ 05' 55''$
 $R = 300.00'$
 $T = 60.18'$
 $L = 118.79'$
 $E = 5.98'$
 $e = NC$
 P.C. STA. = 6006+59.71
 P.T. STA. = 6007+78.49

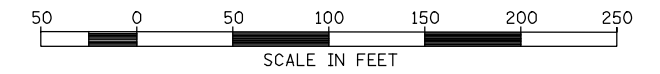
SEC 23, T 6 N, R 3 W, 4th PM

SEC 14, T 6 N, R 3 W, 4th PM

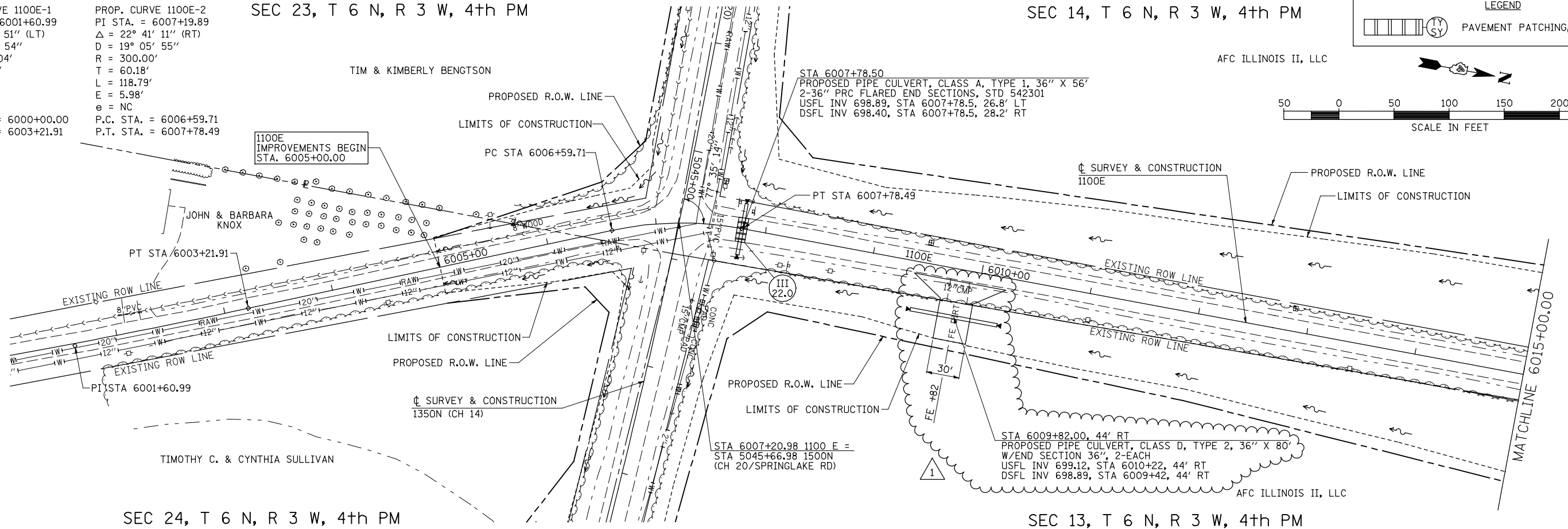
LEGEND

 PAVEMENT PATCHING, TYPE, SQ YD

AFC ILLINOIS II, LLC



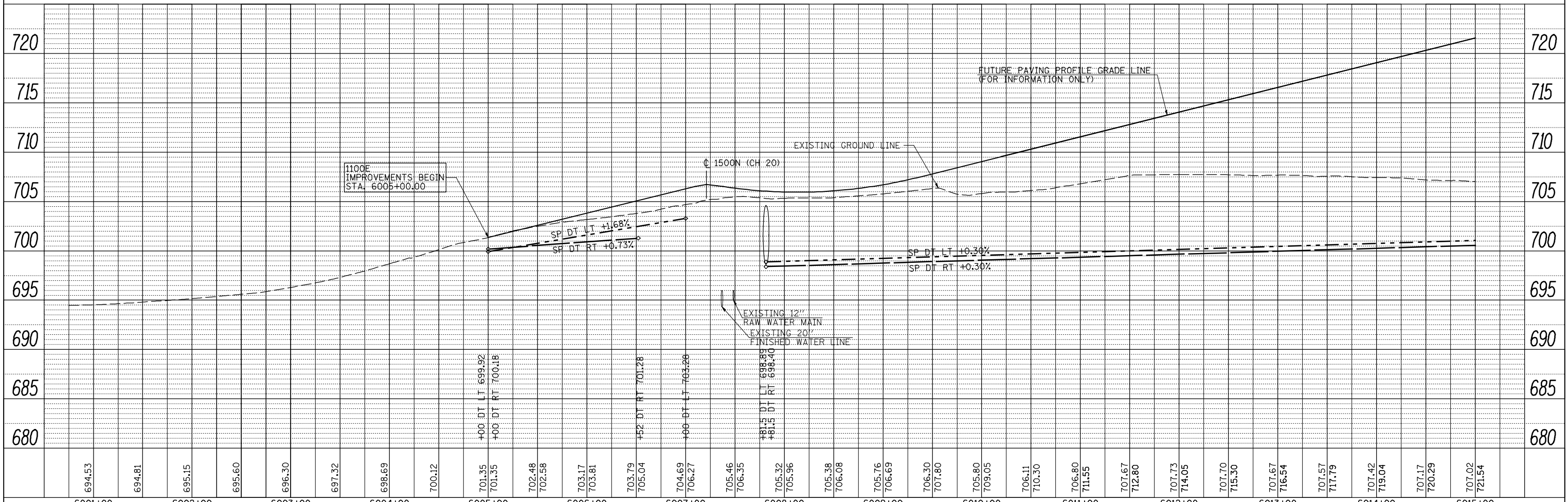
PLAN	SURVEYED	DATE
	PLOTTED	
	CHECKED	
	BY	
	NOTE BOOK NO.	
	CHECKED	
	BY	
	DATE	



SEC 24, T 6 N, R 3 W, 4th PM

SEC 13, T 6 N, R 3 W, 4th PM

PROFILE	SURVEYED	DATE
	PLOTTED	
	CHECKED	
	BY	
	NOTE BOOK NO.	
	CHECKED	
	BY	
	DATE	



FILE NAME =	USER NAME = jdeen	DESIGNED - JRB	REVISED - 02/07/2013
vs:\transportation\2891\grading plans\2891D66(1100E).dgn		DRAWN - RLR	REVISED -
		CHECKED - AWM	REVISED -
		DATE - 12-12-12	REVISED -

STATE OF ILLINOIS
 DEPARTMENT OF TRANSPORTATION

FAP 407 (IL RTE 336)
 GRADING & DRAINAGE PLAN & PROFILE 1100E
 STA. 6001+00 TO STA. 6015+00

SCALE: 1"=50' SHEET NO. 7 OF 23 SHEETS STA. 6001+00 TO STA. 6015+00

F.A.P. RTE. 407	SECTION (55-31A)	COUNTY MCDONOUGH	TOTAL SHEETS 671	SHEET NO. 150
			CONTRACT NO. 68A42	
ILLINOIS FED. AID PROJECT				