

SEC 14, T 6 N, R 3 W, 4th PM

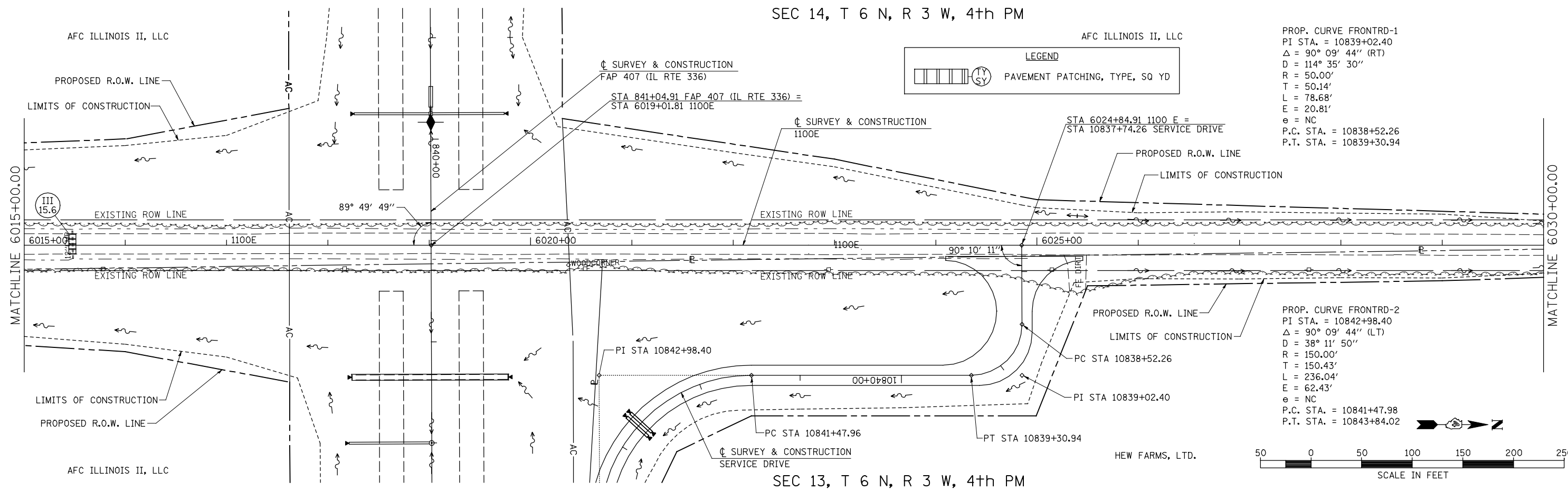
AFC ILLINOIS II, LLC

PROP. CURVE FRONTRD-1
 PI STA. = 10839+02.40
 $\Delta = 90^\circ 09' 44''$ (RT)
 $D = 114^\circ 35' 30''$
 $R = 50.00'$
 $T = 50.14'$
 $L = 78.68'$
 $E = 20.81'$
 $e = NC$
 P.C. STA. = 10838+52.26
 P.T. STA. = 10839+30.94

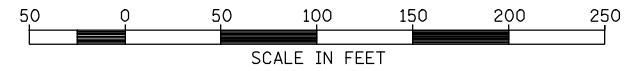
LEGEND

PAVEMENT PATCHING, TYPE, SQ YD

DATE	
BY	
PLAN	
NO. BOOK	
CHECKED	
DATE	
FILE NAME	



PROP. CURVE FRONTRD-2
 PI STA. = 10842+98.40
 $\Delta = 90^\circ 09' 44''$ (LT)
 $D = 38^\circ 11' 50''$
 $R = 150.00'$
 $T = 150.43'$
 $L = 236.04'$
 $E = 62.43'$
 $e = NC$
 P.C. STA. = 10841+47.98
 P.T. STA. = 10843+84.02

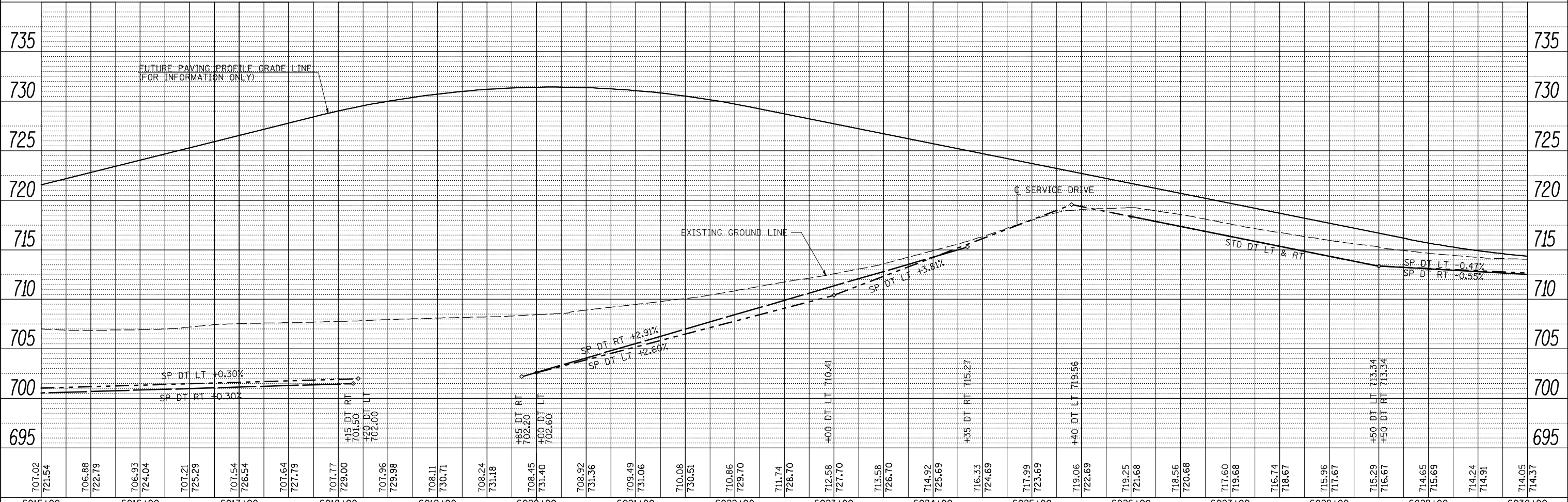


SEC 13, T 6 N, R 3 W, 4th PM

AFC ILLINOIS II, LLC

HEW FARMS, LTD.

DATE	
BY	
PROFILE	
NO. BOOK	
CHECKED	
DATE	
FILE NAME	



FILE NAME =	USER NAME = jdeen	DESIGNED - JRB	REVISED -	<p align="center">STATE OF ILLINOIS DEPARTMENT OF TRANSPORTATION</p>	<p align="center">FAP 407 (IL RTE 336) GRADING & DRAINAGE PLAN & PROFILE 1100E STA. 6015+00 TO STA. 6030+00</p>		F.A.P. RTE. 407	SECTION (55-31A)	COUNTY MCDONOUGH	TOTAL SHEETS 671	SHEET NO. 151
vs:\transportation\2891\grading plans\2891037(1100E).dgn		DRAWN - RLR	REVISED -		SCALE: 1"=50'	SHEET NO. 8 OF 23 SHEETS	STA. 6015+00 TO STA. 6030+00	CONTRACT NO. 68A42		ILLINOIS FED. AID PROJECT	
PLOT SCALE = 100.0000' / IN.		CHECKED - AWM	REVISED -								
PLOT DATE = 12/12/2012		DATE - 12-12-12	REVISED -								