

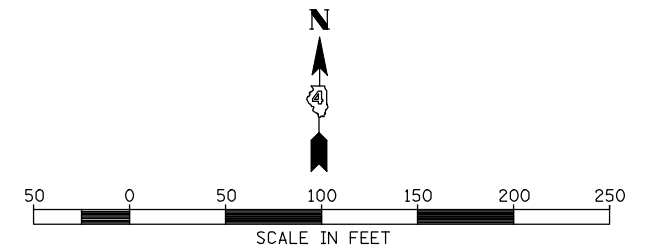
SEC 14, T 6 N, R 3 W, 4th PM

SEC 13, T 6 N, R 3 W, 4th PM

STA 6024+84.91 1100 E =  
STA 10837+74.26 SERVICE DRIVE

PROP. CURVE SERVDR-1  
PI STA. = 10839+02.40  
 $\Delta = 90^\circ 09' 44''$  (RT)  
D = 114' 35" 30"  
R = 50.00'  
T = 50.14'  
L = 78.68'  
E = 20.81'  
e = NC  
P.C. STA. = 10838+52.26  
P.T. STA. = 10839+30.94

PROP. SERVDR-2  
PI STA. = 10842+98.40  
 $\Delta = 90^\circ 09' 44''$  (LT)  
D = 38' 11" 50"  
R = 150.00'  
T = 150.43'  
L = 236.04'  
E = 62.43'  
e = NC  
P.C. STA. = 10841+47.98  
P.T. STA. = 10843+84.02



PLAN	SURVEYED	DATE
	PLOTTED	BY
	GRADES CHECKED	
	STRUCTURE NOTATIONS CHECKED	
	NOTE BOOK NO.	
	CADD FILE NAME	

PROFILE	SURVEYED	DATE
	PLOTTED	BY
	GRADES CHECKED	
	STRUCTURE NOTATIONS CHECKED	
	NOTE BOOK NO.	
	CADD FILE NAME	

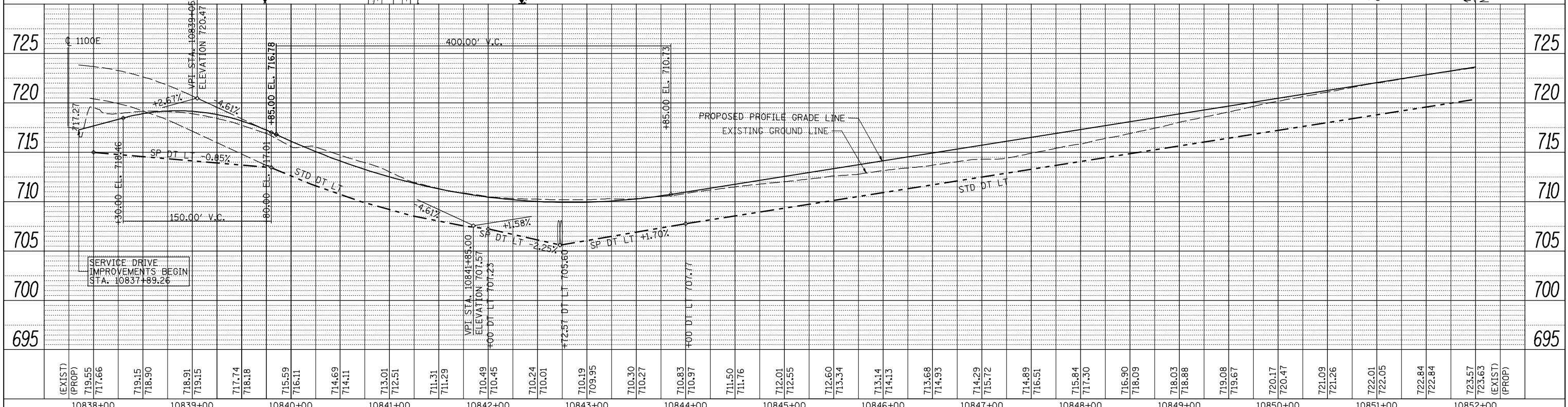
AFC ILLINOIS II, LLC

HEW FARMS, LTD.

CL SURVEY & CONSTRUCTION  
1100E

STA 10842+72.57  
2-PROPOSED PIPE CULVERT, CLASS A, TYPE 1, 30" X 28"  
4-30" PRC FLARED END SECTIONS, STD 542301  
USFL INV 705.60, STA 10842+72.57, 14.0' LT  
DSFL INV 705.40, STA 10842+72.57, 14.0' RT

FOR SERVICE DRIVE RIGHT  
SIDE DITCH INFORMATION,  
SEE IL RTE 336 DRAINAGE  
PLAN & PROFILE SHEETS



FILE NAME =	USER NAME = jdeen	DESIGNED - JRB	REVISED -
va\transportation\2891\grading plans\2891D3\%SDI.dgn		DRAWN - RLR	REVISED -
PLOT SCALE = 1/8" = 100.0000' / IN.		CHECKED - AWM	REVISED -
PLOT DATE = 12/12/2012		DATE - 12-12-12	REVISED -

STATE OF ILLINOIS  
DEPARTMENT OF TRANSPORTATION

FAP 407 (IL RTE 336)  
GRADING & DRAINAGE PLAN & PROFILE SERV. DR.  
STA. 10837+85.26 TO STA 10852+00

SCALE: 1"=50' SHEET NO. 10 OF 23 SHEETS STA. 10837+85.26 TO STA. 10852+00

F.A.P. RTE. 407	SECTION (55-31A)	COUNTY MCDONOUGH	TOTAL SHEETS 671	SHEET NO. 153
CONTRACT NO. 68A42			ILLINOIS FED. AID PROJECT	