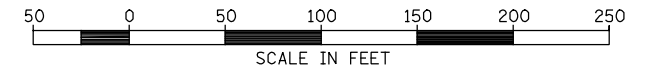
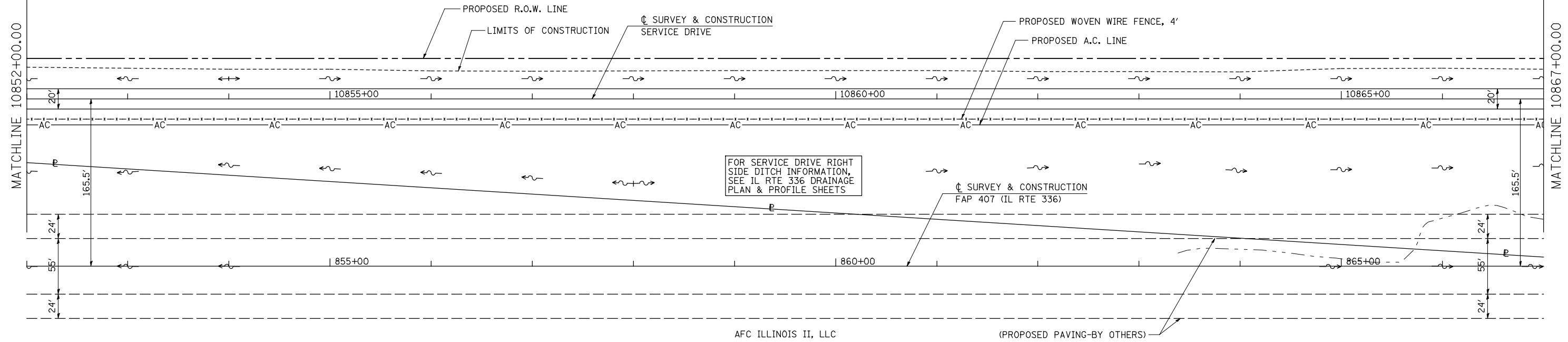


SEC 13, T 6 N, R 3 W, 4th PM

HEW FARMS, LTD.



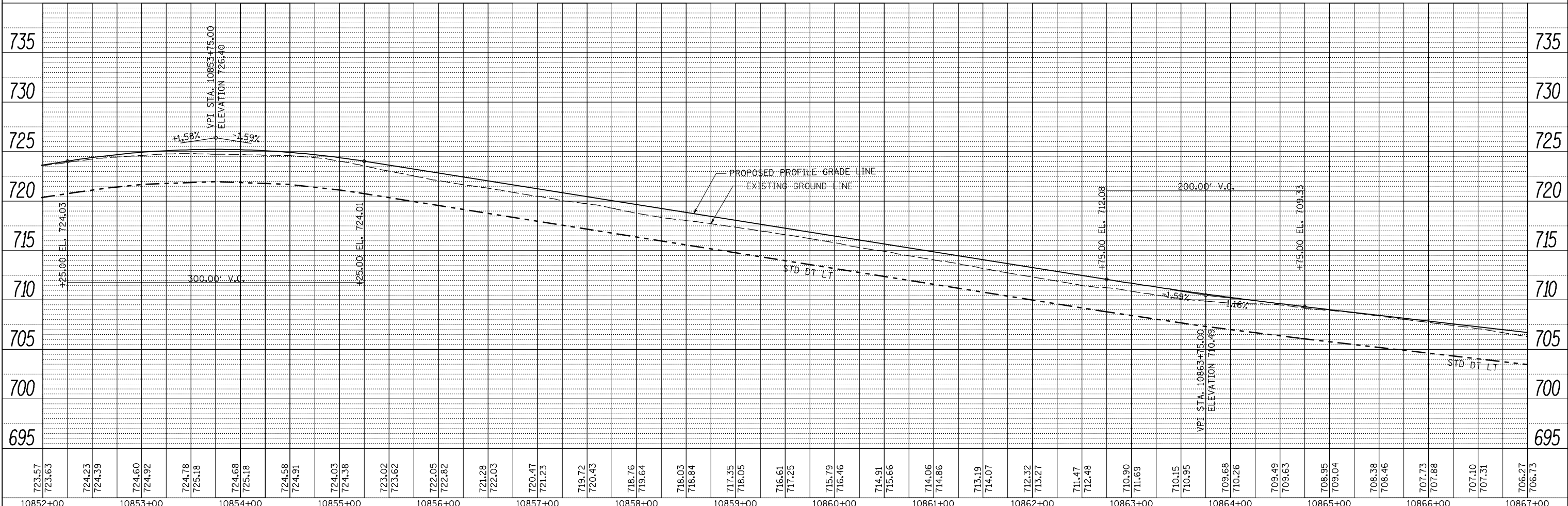
DATE	
BY	
SURVEYED	
PLANNED	
NOTED	
NO.	



AFC ILLINOIS II, LLC

(PROPOSED PAVING-BY OTHERS)

DATE	
BY	
SURVEYED	
PLANNED	
NOTED	
NO.	



723.57	723.63	724.23	724.39	724.60	724.92	724.78	725.18	724.68	725.18	724.58	724.91	724.03	724.38	723.02	723.62	722.05	722.82	721.28	722.03	720.47	721.23	719.72	720.43	718.76	719.64	718.03	718.84	717.35	718.05	716.61	717.25	715.79	716.46	714.91	715.66	714.06	714.86	713.19	714.07	712.32	713.27	711.47	712.48	710.90	711.69	710.15	710.95	709.68	710.26	709.49	709.63	708.95	709.04	708.38	708.46	707.73	707.88	707.10	707.31	706.27	706.73
10852+00	10853+00	10854+00	10855+00	10856+00	10857+00	10858+00	10859+00	10860+00	10861+00	10862+00	10863+00	10864+00	10865+00	10866+00	10867+00																																														

FILE NAME =	USER NAME = jdeen	DESIGNED - JRB	REVISED -
vs:\transportation\2891\grading plans\2891D48(SD).dgn	DRAWN - RLR	REVISIONS -	
PLOT SCALE = 100.0000' / IN.	CHECKED - AWM	REVISIONS -	
PLOT DATE = 12/12/2012	DATE - 12-12-12	REVISIONS -	

STATE OF ILLINOIS
DEPARTMENT OF TRANSPORTATION

FAP 407 (IL RTE 336)
GRADING & DRAINAGE PLAN & PROFILE SERV. DR.
STA. 10852+00 TO STA. 10867+00

SCALE: 1"=50' SHEET NO. 11 OF 23 SHEETS STA. 10852+00 TO STA. 10867+00

F.A.P. RTE. 407	SECTION (55-31A)	COUNTY MCDONOUGH	TOTAL SHEETS 671	SHEET NO. 154
CONTRACT NO. 68A42			ILLINOIS FED. AID PROJECT	