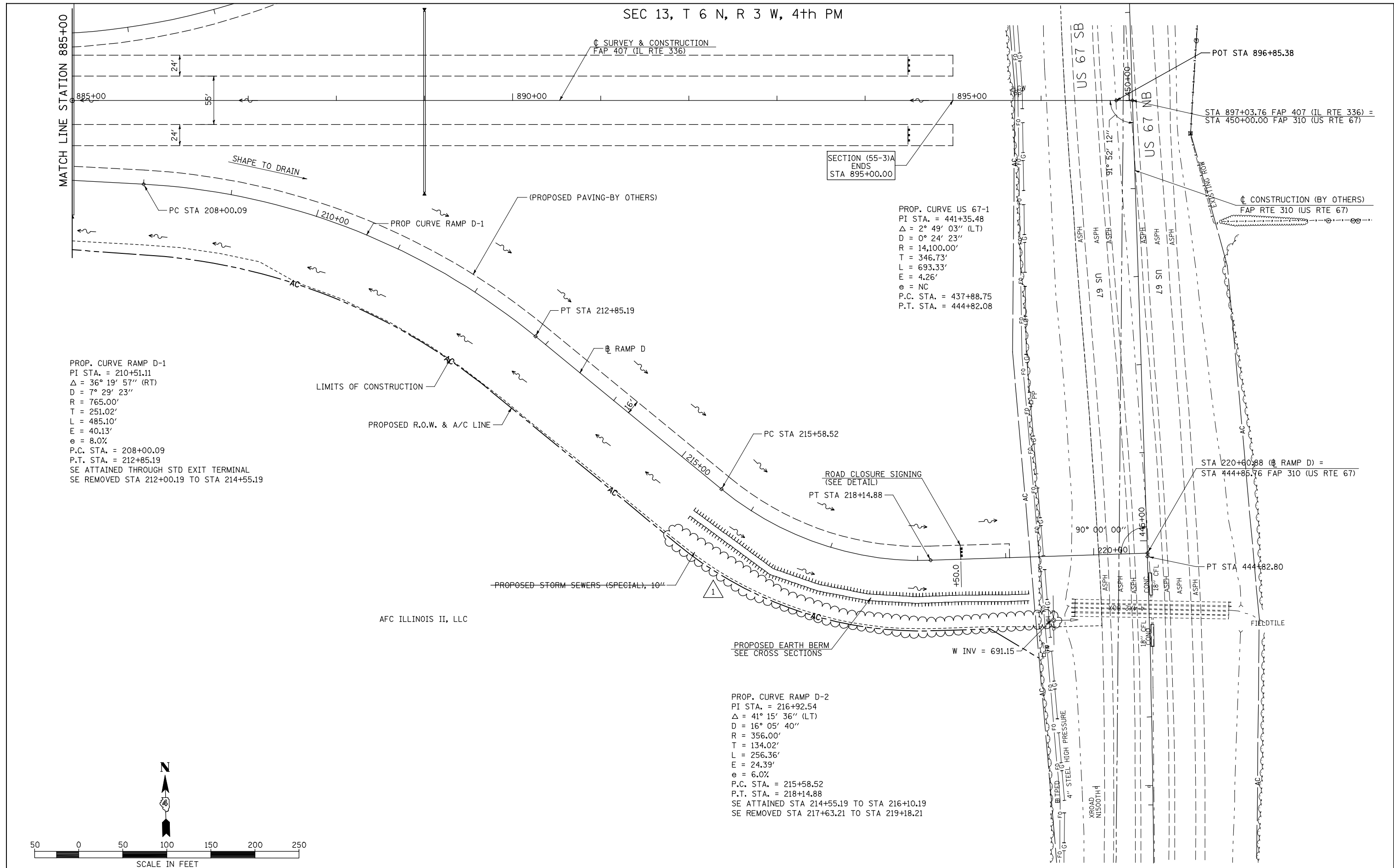


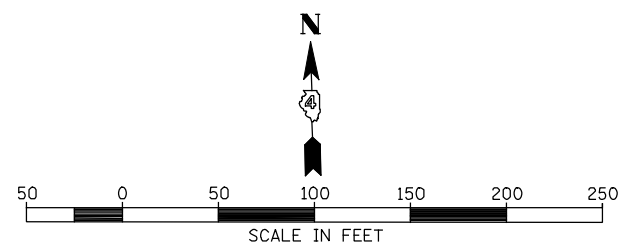
SEC 13, T 6 N, R 3 W, 4th PM



PROP. CURVE RAMP D-1  
 PI STA. = 210+51.11  
 $\Delta = 36^\circ 19' 57''$  (RT)  
 $D = 7^\circ 29' 23''$   
 $R = 765.00'$   
 $T = 251.02'$   
 $L = 485.10'$   
 $E = 40.13'$   
 $e = 8.0\%$   
 P.C. STA. = 208+00.09  
 P.T. STA. = 212+85.19  
 SE ATTAINED THROUGH STD EXIT TERMINAL  
 SE REMOVED STA 212+00.19 TO STA 214+55.19

PROP. CURVE US 67-1  
 PI STA. = 441+35.48  
 $\Delta = 2^\circ 49' 03''$  (LT)  
 $D = 0^\circ 24' 23''$   
 $R = 14,100.00'$   
 $T = 346.73'$   
 $L = 693.33'$   
 $E = 4.26'$   
 $e = NC$   
 P.C. STA. = 437+88.75  
 P.T. STA. = 444+82.08

PROP. CURVE RAMP D-2  
 PI STA. = 216+92.54  
 $\Delta = 41^\circ 15' 36''$  (LT)  
 $D = 16^\circ 05' 40''$   
 $R = 356.00'$   
 $T = 134.02'$   
 $L = 256.36'$   
 $E = 24.39'$   
 $e = 6.0\%$   
 P.C. STA. = 215+58.52  
 P.T. STA. = 218+14.88  
 SE ATTAINED STA 214+55.19 TO STA 216+10.19  
 SE REMOVED STA 217+63.21 TO STA 219+18.21



FILE NAME =	USER NAME = jdeen	DESIGNED - JRB	REVISED - 02/07/2013
v:\transportation\2891\grading plans\2891\DP1an29-RampD.dgn		DRAWN - RLR	REVISED -
	PLOT SCALE = 1/8" = 1' / IN.	CHECKED - AWM	REVISED -
	PLOT DATE = 2/7/2013	DATE - 12-12-12	REVISED -

**STATE OF ILLINOIS  
 DEPARTMENT OF TRANSPORTATION**

**FAP 407 (IL RTE 336)  
 GRADING & DRAINAGE PLAN & PROFILE RAMP D**

SCALE: 1"=50'      SHEET NO. 20 OF 23 SHEETS      STA. TO STA.

F.A.P. RTE.	SECTION	COUNTY	TOTAL SHEETS	SHEET NO.
407	(55-3)A	McDONOUGH	671	163
CONTRACT NO. 68A42				
ILLINOIS FED. AID PROJECT				