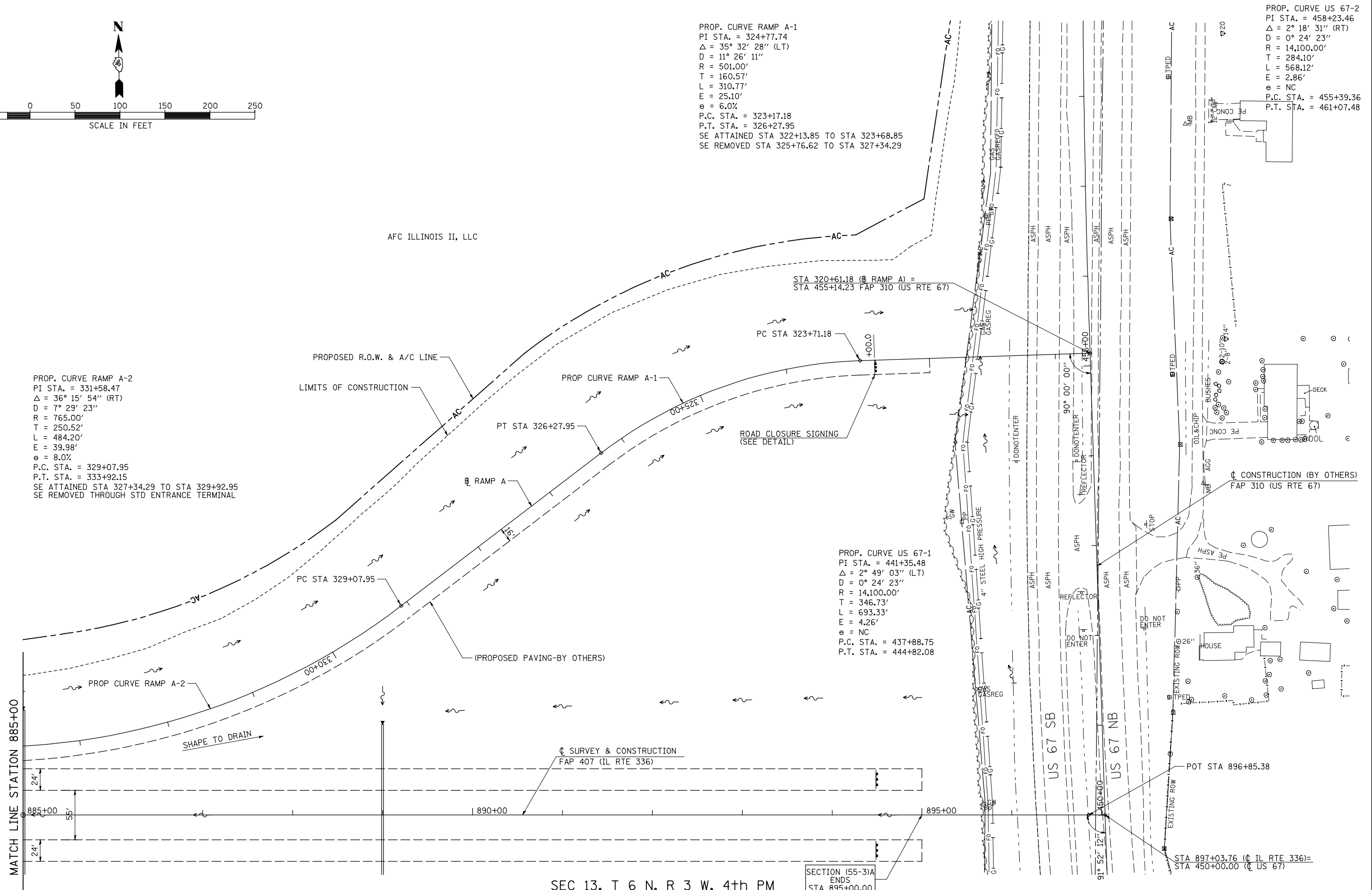


PROP. CURVE RAMP A-1  
 PI STA. = 324+77.74  
 $\Delta = 35^\circ 32' 28''$  (LT)  
 $D = 11^\circ 26' 11''$   
 $R = 501.00'$   
 $T = 160.57'$   
 $L = 310.77'$   
 $E = 25.10'$   
 $e = 6.0\%$   
 P.C. STA. = 323+17.18  
 P.T. STA. = 326+27.95  
 SE ATTAINED STA 322+13.85 TO STA 323+68.85  
 SE REMOVED STA 325+76.62 TO STA 327+34.29

PROP. CURVE US 67-2  
 PI STA. = 458+23.46  
 $\Delta = 2^\circ 18' 31''$  (RT)  
 $D = 0^\circ 24' 23''$   
 $R = 14,100.00'$   
 $T = 284.10'$   
 $L = 568.12'$   
 $E = 2.86'$   
 $e = NC$   
 P.C. STA. = 455+39.36  
 P.T. STA. = 461+07.48

PROP. CURVE RAMP A-2  
 PI STA. = 331+58.47  
 $\Delta = 36^\circ 15' 54''$  (RT)  
 $D = 7^\circ 29' 23''$   
 $R = 765.00'$   
 $T = 250.52'$   
 $L = 484.20'$   
 $E = 39.98'$   
 $e = 8.0\%$   
 P.C. STA. = 329+07.95  
 P.T. STA. = 333+92.15  
 SE ATTAINED STA 327+34.29 TO STA 329+92.95  
 SE REMOVED THROUGH STD ENTRANCE TERMINAL

PROP. CURVE US 67-1  
 PI STA. = 441+35.48  
 $\Delta = 2^\circ 49' 03''$  (LT)  
 $D = 0^\circ 24' 23''$   
 $R = 14,100.00'$   
 $T = 346.73'$   
 $L = 693.33'$   
 $E = 4.26'$   
 $e = NC$   
 P.C. STA. = 437+88.75  
 P.T. STA. = 444+82.08



SEC 13, T 6 N, R 3 W, 4th PM

SECTION (55-31A)  
 ENDS  
 STA 895+00.00

FILE NAME =	USER NAME = jdeen	DESIGNED - JRB	REVISED -
v:\transportation\2891\grading plans\2891\DP1an28-RampA.dgn		DRAWN - RLR	REVISED -
PLOT SCALE = 100.00' / IN.		CHECKED - AWM	REVISED -
PLOT DATE = 12/12/2012		DATE - 12-12-12	REVISED -

**STATE OF ILLINOIS  
 DEPARTMENT OF TRANSPORTATION**

**FAP 407 (IL RTE 336)  
 GRADING & DRAINAGE PLAN & PROFILE RAMP A**

SCALE: 1"=50'    SHEET NO. 22 OF 23 SHEETS    STA.    TO STA.

F.A.P. RTE.	SECTION	COUNTY	TOTAL SHEETS	SHEET NO.
407	(55-31A)	McDONOUGH	671	165
			CONTRACT NO. 68A42	
ILLINOIS FED. AID PROJECT				