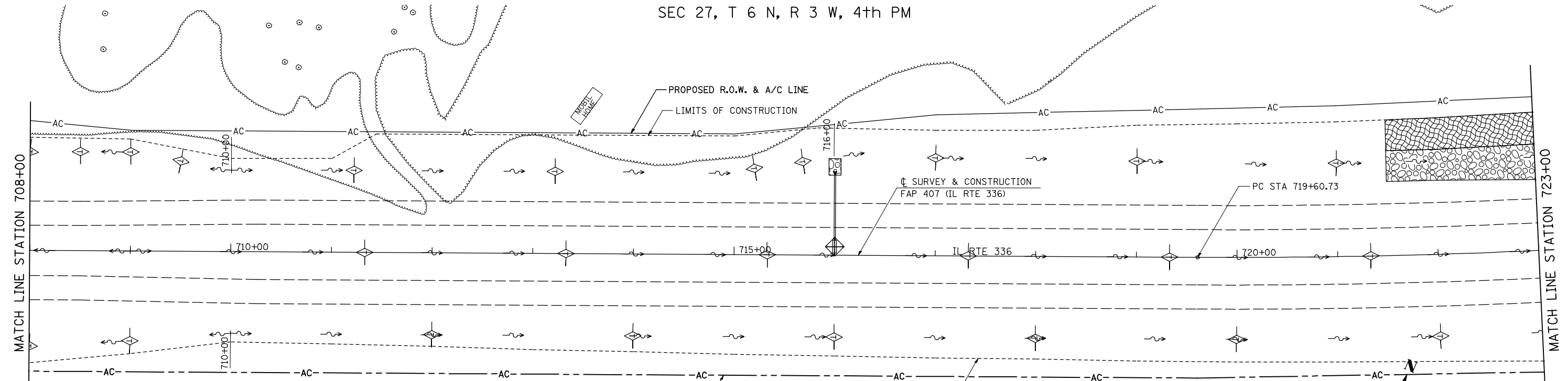


SEC 27, T 6 N, R 3 W, 4th PM

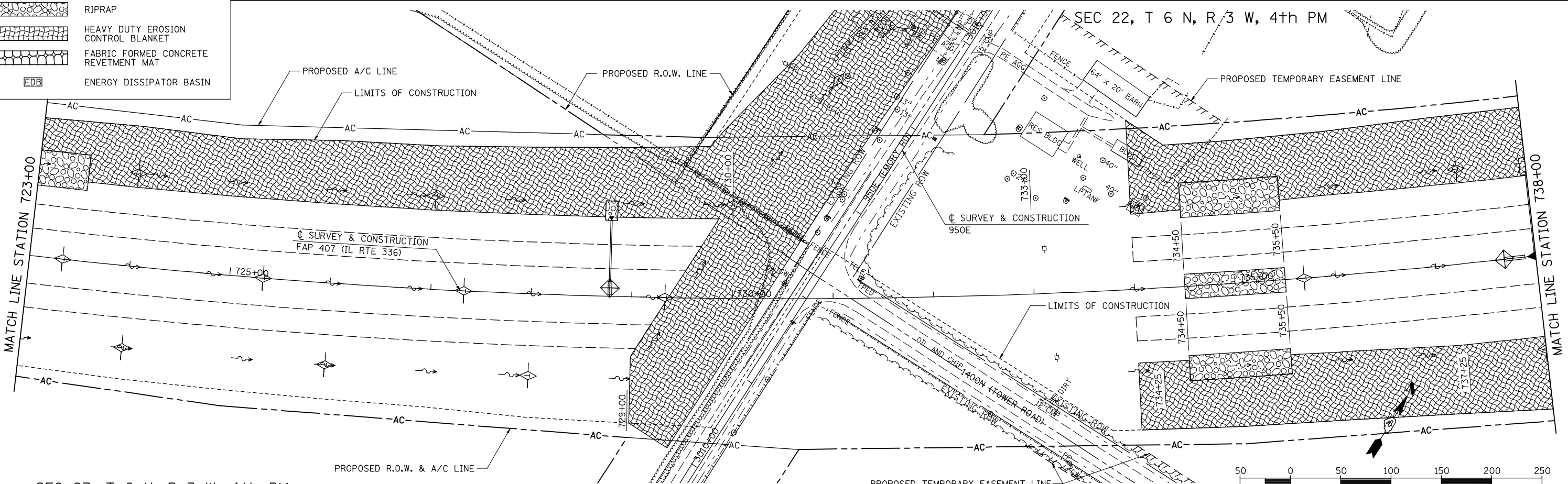
PLAN	SURVEYED	DATE
NOTE BOOK	PLOTTED	BY
NO.	CHECKED	
	ALIGNMENT	
	MAXIMUM	
	GRADE	
	FILE NAME	



LEGEND

- PERIMETER EROSION BARRIER
- TEMPORARY DITCH CHECKS
- INLET AND PIPE PROTECTION
- SEDIMENT BASIN
- RIPRAP
- HEAVY DUTY EROSION CONTROL BLANKET
- FABRIC FORMED CONCRETE REVETMENT MAT
- ENERGY DISSIPATOR BASIN

PROFILE	SURVEYED	DATE
NOTE BOOK	GRADES CHECKED	BY
NO.	STRUCTURE	
	NOTATION	



SEC 27, T 6 N, R 3 W, 4th PM

FILE NAME =	USER NAME = jdeen	DESIGNED - JRB	REVISED -
V:\Transportation\2891\Grading Plans\2891E13.dgn		DRAWN - JMO	REVISED -
PLOT SCALE = 1/8" = 1' / IN.		CHECKED - AWM	REVISED -
PLOT DATE = 12/12/2012		DATE - 12-12-12	REVISED -

**STATE OF ILLINOIS
DEPARTMENT OF TRANSPORTATION**

FAP 407 (IL RTE 336)
EROSION CONTROL PLAN - STATION 708+00 TO STATION 738+00
SCALE: 1"=50' SHEET NO. 13 OF 21 SHEETS STA. 708+00 TO STA. 738+00

F.A.P. RTE.	SECTION	COUNTY	TOTAL SHEETS	SHEET NO.
407	(55-31A)	McDONOUGH	671	190
			CONTRACT NO. 68A42	
ILLINOIS FED. AID PROJECT				