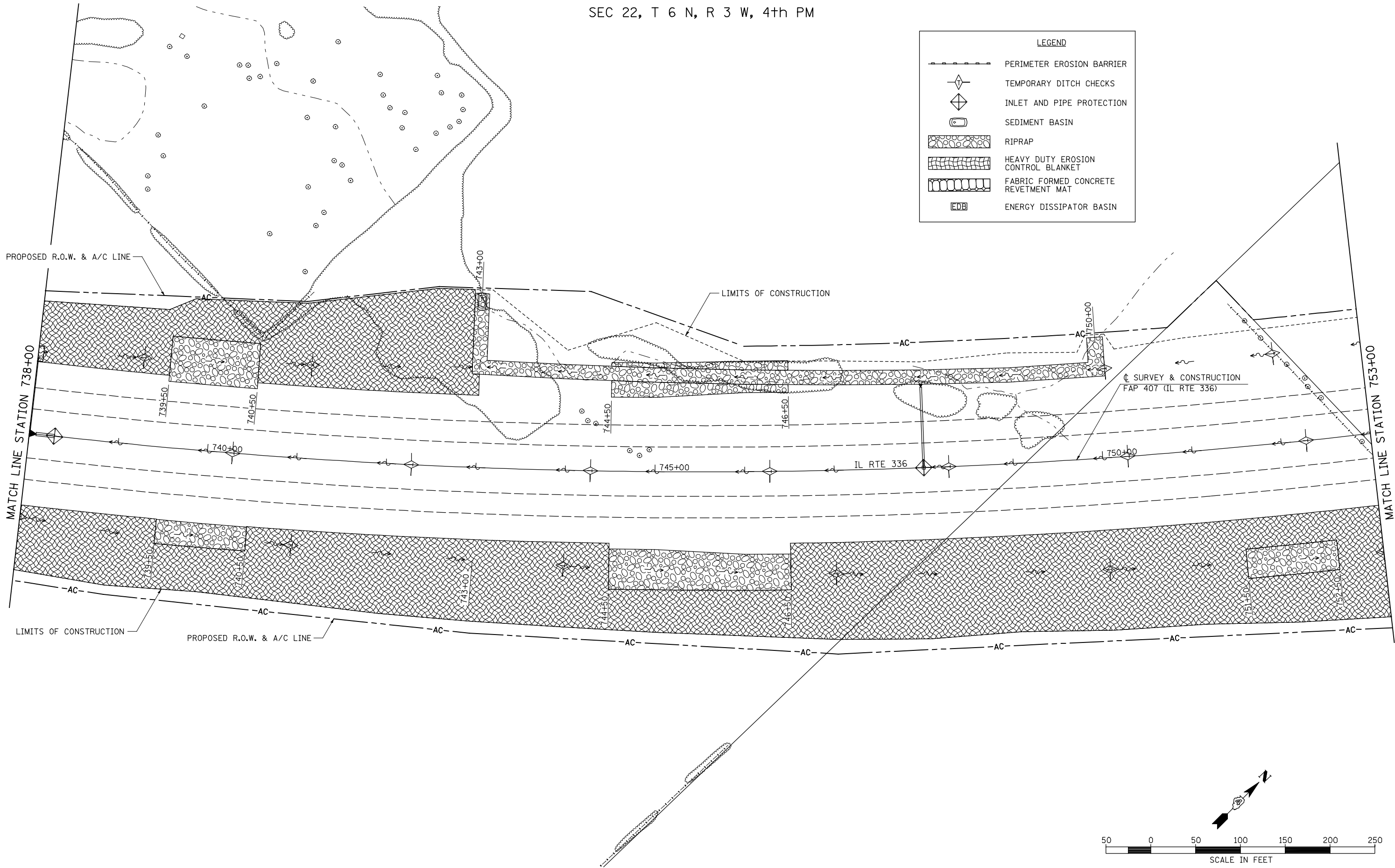


SEC 22, T 6 N, R 3 W, 4th PM

| LEGEND | |
|--------|--------------------------------------|
| | PERIMETER EROSION BARRIER |
| | TEMPORARY DITCH CHECKS |
| | INLET AND PIPE PROTECTION |
| | SEDIMENT BASIN |
| | RIPRAP |
| | HEAVY DUTY EROSION CONTROL BLANKET |
| | FABRIC FORMED CONCRETE REVETMENT MAT |
| | ENERGY DISSIPATOR BASIN |

| | | |
|---------------|----------------|------|
| PLAN | SURVEYED | DATE |
| NOTE BOOK NO. | PLOTTED | BY |
| | CHECKED | |
| | ALIGNED | |
| | ASSEMBLED | |
| | FILED | |
| | CADD FILE NAME | |

| | | |
|---------------|----------------|------|
| PROFILE | SURVEYED | DATE |
| NOTE BOOK NO. | GRADES CHECKED | BY |
| | STRUCTURE | |
| | NOTATION CHKD | |



| | | | |
|--|----------------------------|-----------------|-----------|
| FILE NAME = | USER NAME = jdeen | DESIGNED - JRB | REVISED - |
| V:\Transportation\2891\Grading Plans\2891E14-A.dgn | | DRAWN - JMO | REVISED - |
| | PLOT SCALE = 100.00' / IN. | CHECKED - AWM | REVISED - |
| | PLOT DATE = 12/12/2012 | DATE - 12-12-12 | REVISED - |

**STATE OF ILLINOIS
DEPARTMENT OF TRANSPORTATION**

**FAP 407 (IL RTE 336)
EROSION CONTROL PLAN - STA 738+00 TO STA 753+00**

| F.A.P. RTE. | SECTION | COUNTY | TOTAL SHEETS | SHEET NO. |
|-------------|---------|-----------|--------------------|-----------|
| 407 | (55-3)A | McDONOUGH | 671 | 191 |
| | | | CONTRACT NO. 68A42 | |

SCALE: 1"=50' SHEET NO. 14 OF 21 SHEETS STA. 738+00 TO STA. 753+00

ILLINOIS FED. AID PROJECT