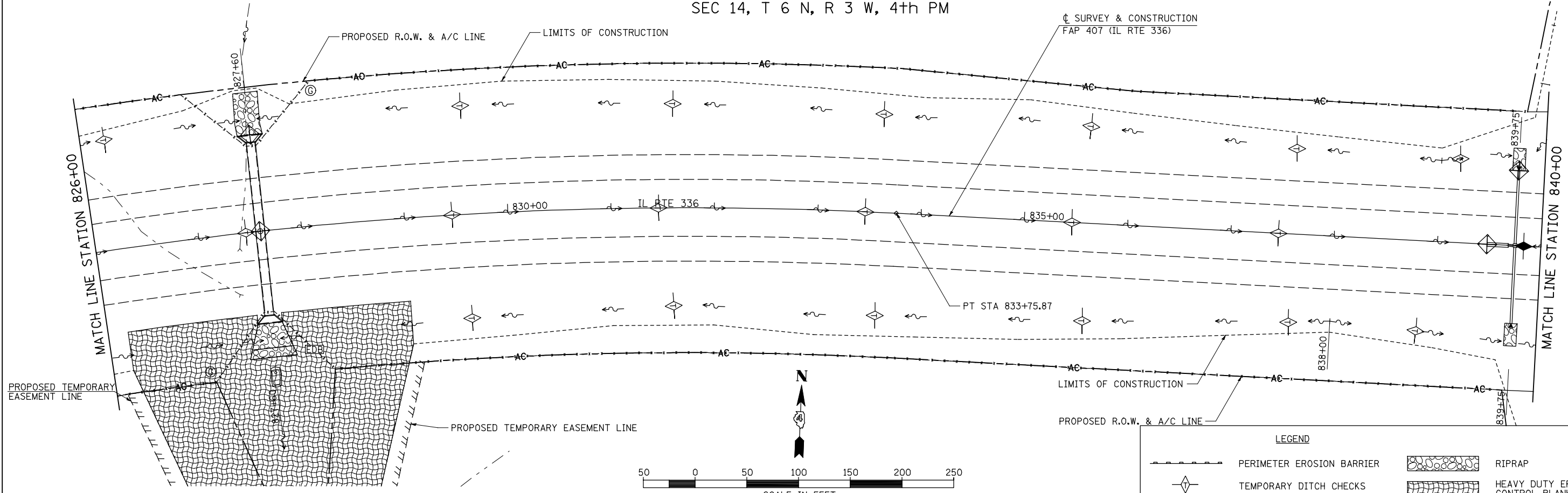


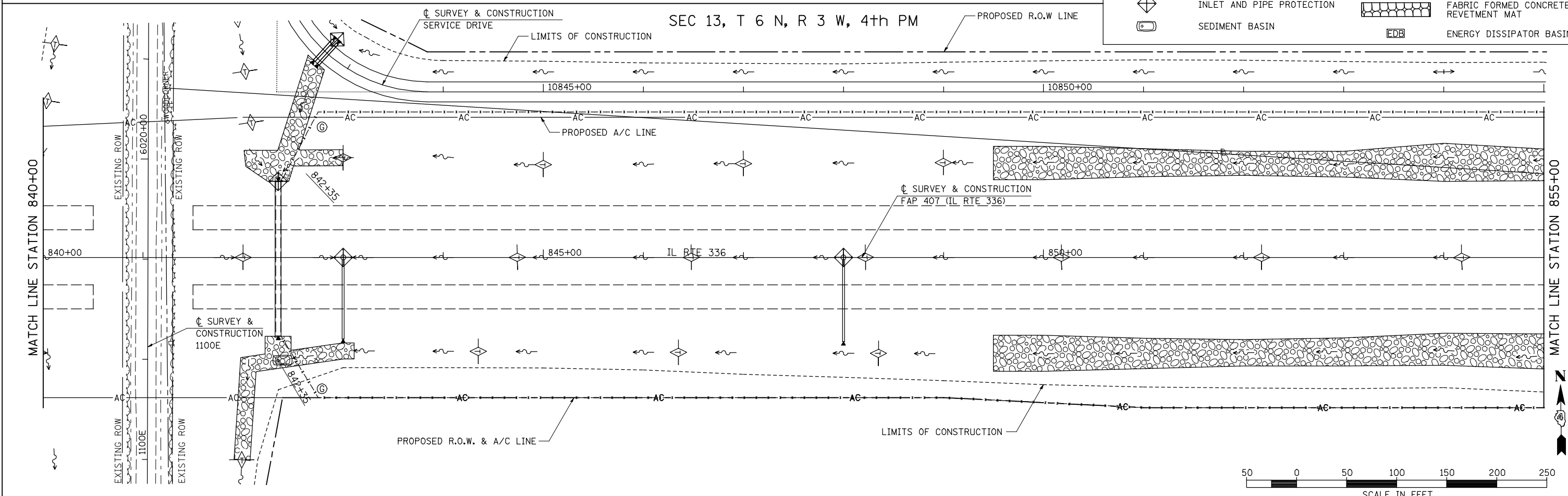
DATE	
BY	
PLAN	SURVEYED
	PLOTTED
	NOTED
	CHECKED
	APPROVED
	DATE
	FILE NAME
	NO.

SEC 14, T 6 N, R 3 W, 4th PM



DATE	
BY	
PROFILE	SURVEYED
	PLOTTED
	GRADES CHECKED
	STRUCTURE NOTATIONS OK'D
	NO.

SEC 13, T 6 N, R 3 W, 4th PM



**LEGEND**

	PERIMETER EROSION BARRIER		RIPRAP
	TEMPORARY DITCH CHECKS		HEAVY DUTY EROSION CONTROL BLANKET
	INLET AND PIPE PROTECTION		FABRIC FORMED CONCRETE REVETMENT MAT
	SEDIMENT BASIN		ENERGY DISSIPATOR BASIN

FILE NAME =	USER NAME = jdeen	DESIGNED - JRB	REVISED -
V:\Transportation\2891\Grading Plans\2891E17.dgn		DRAWN - JMO	REVISED -
PLOT SCALE = 100.00' / IN.		CHECKED - AWM	REVISED -
PLOT DATE = 12/12/2012		DATE - 12-12-12	REVISED -

**STATE OF ILLINOIS  
DEPARTMENT OF TRANSPORTATION**

**FAP 407 (IL RTE 336)  
EROSION CONTROL PLAN - STATION 826+00 TO STATION 855+00**

F.A.P. RTE.	SECTION	COUNTY	TOTAL SHEETS	SHEET NO.
407	(55-3)A	McDONOUGH	671	196
			CONTRACT NO. 68A42	

SCALE: 1"=50' SHEET NO. 19 OF 21 SHEETS STA. 826+00 TO STA. 855+00

ILLINOIS FED. AID PROJECT