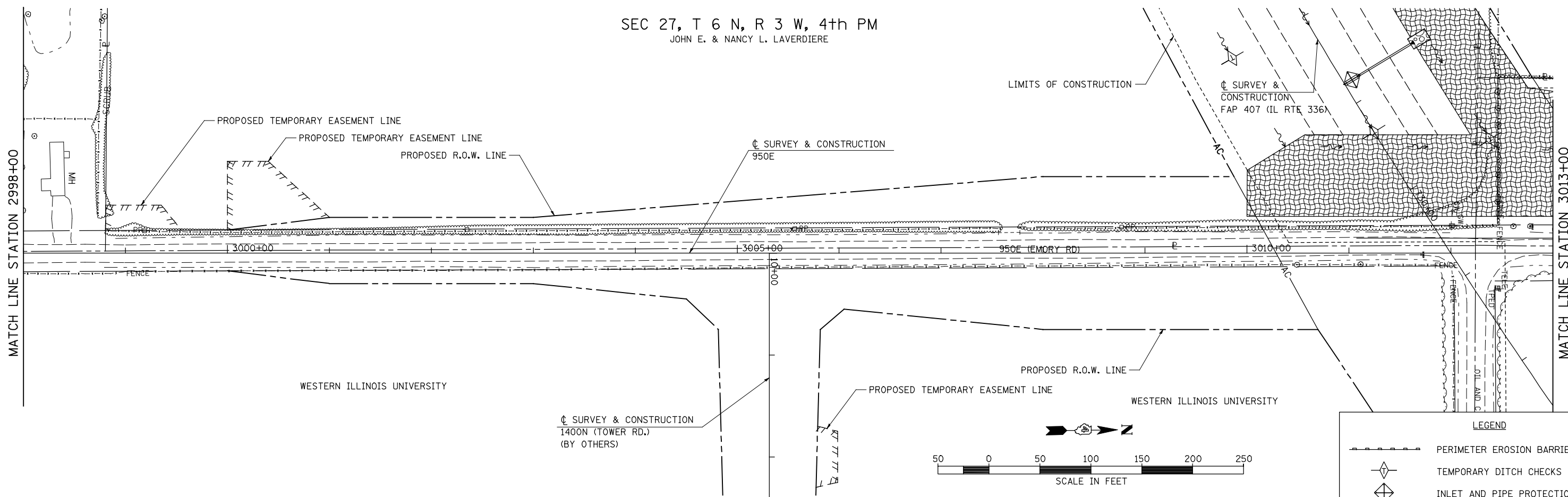


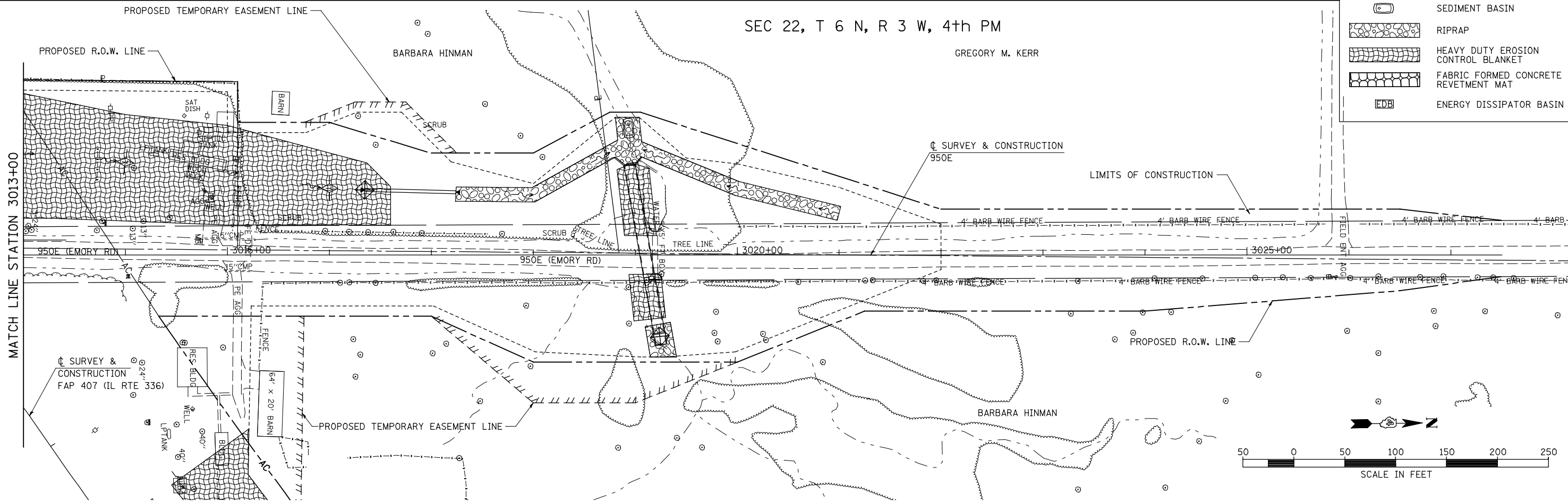
SEC 27, T 6 N, R 3 W, 4th PM
JOHN E. & NANCY L. LAVERDIERE

PLAN	SURVEYED	DATE
	PLOTTED	BY
	NOTED	
	CHECKED	
	FILED	
	NO.	



PROFILE	SURVEYED	DATE
	PLOTTED	BY
	NOTED	
	CHECKED	
	FILED	
	NO.	

SEC 22, T 6 N, R 3 W, 4th PM
GREGORY M. KERR



FILE NAME =	USER NAME = jdeen	DESIGNED - JRB	REVISED -
V:\Transportation\2891\Grading Plans\2891E\211950E.dgn		DRAWN - JMO	REVISED -
		CHECKED - AWM	REVISED -
		DATE - 12-12-12	REVISED -

STATE OF ILLINOIS
DEPARTMENT OF TRANSPORTATION

FAP 407 (IL RTE 336)
EROSION CONTROL PLAN 950E - STA. 2998+00 TO STA. 3027+50

SCALE: 1"=50' SHEET NO. 1 OF 1 SHEETS STA. 2998+00 TO STA. 3027+50

F.A.P. RTE.	SECTION	COUNTY	TOTAL SHEETS	SHEET NO.
407	(55-31A)	McDONOUGH	671	200
			CONTRACT NO. 68A42	
ILLINOIS FED. AID PROJECT				