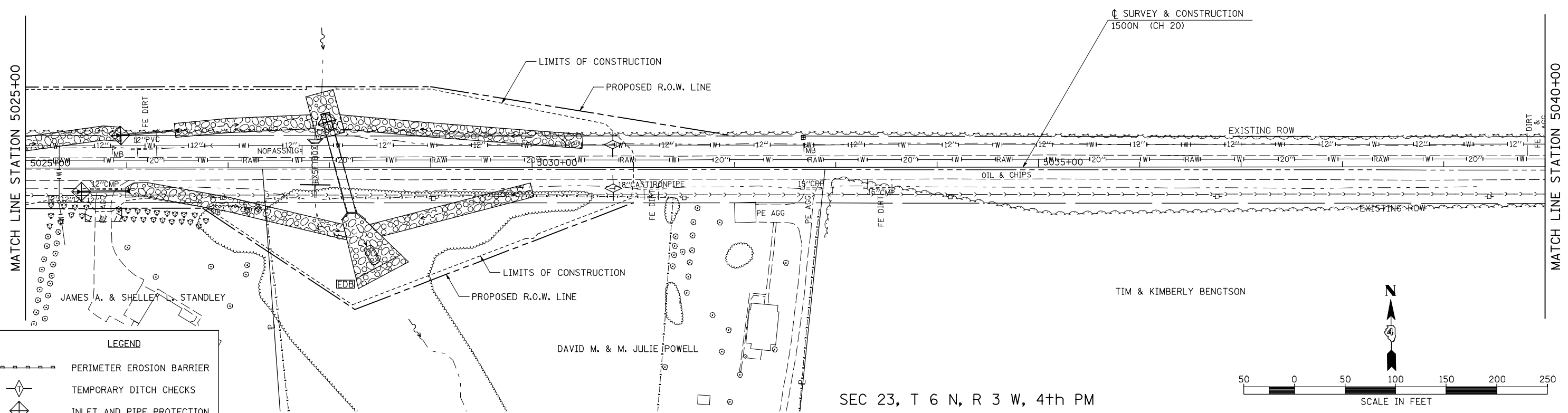


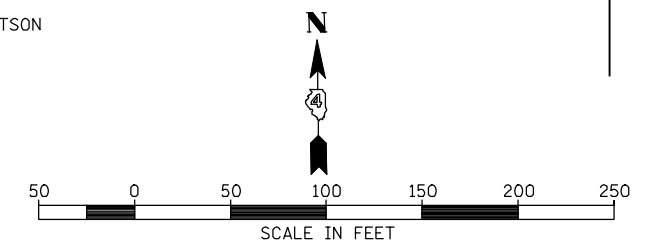
SEC 14, T 6 N, R 3 W, 4th PM

FIRST STATE BANK



LEGEND

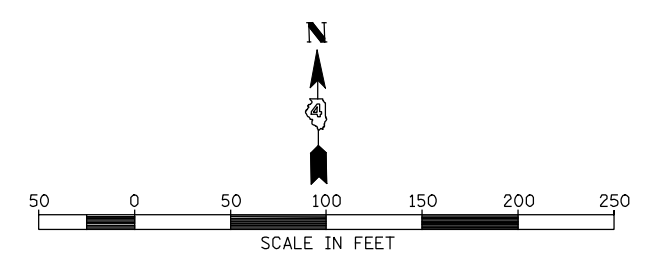
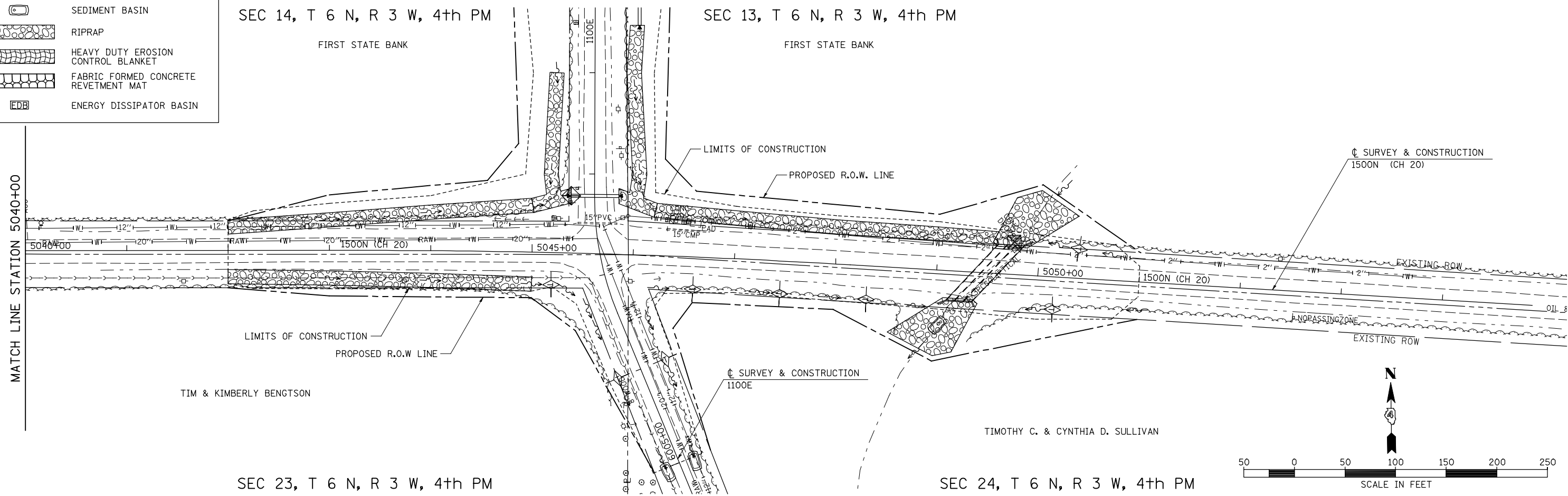
	PERIMETER EROSION BARRIER
	TEMPORARY DITCH CHECKS
	INLET AND PIPE PROTECTION
	SEDIMENT BASIN
	RIPRAP
	HEAVY DUTY EROSION CONTROL BLANKET
	FABRIC FORMED CONCRETE REVETMENT MAT
	ENERGY DISSIPATOR BASIN



SEC 23, T 6 N, R 3 W, 4th PM

SEC 14, T 6 N, R 3 W, 4th PM

SEC 13, T 6 N, R 3 W, 4th PM



SEC 23, T 6 N, R 3 W, 4th PM

SEC 24, T 6 N, R 3 W, 4th PM

FILE NAME =	USER NAME = jdeen	DESIGNED - JRB	REVISED -	STATE OF ILLINOIS DEPARTMENT OF TRANSPORTATION	FAP 407 (IL RTE 336) EROSION CONTROL PLAN 1500N (CH20) STA. 5025+00 TO STA. 5054+00	F.A.P. RTE. 407	SECTION (55-31A)	COUNTY McDONOUGH	TOTAL SHEETS 671	SHEET NO. 202
V:\Transportation\2891\Grading Plans\2891E22-A(CH20).dgn	DRAWN - JMO	REVISIONS -	CONTRACT NO. 68A42			ILLINOIS FED. AID PROJECT				
PLOT SCALE = 100.00' / IN.	CHECKED - AWM	REVISIONS -	SCALE: 1"=50'			SHEET NO. 2 OF 2 SHEETS	STA. 5025+00 TO STA. 5054+00			
PLOT DATE = 12/12/2012	DATE - 12-12-12	REVISIONS -								