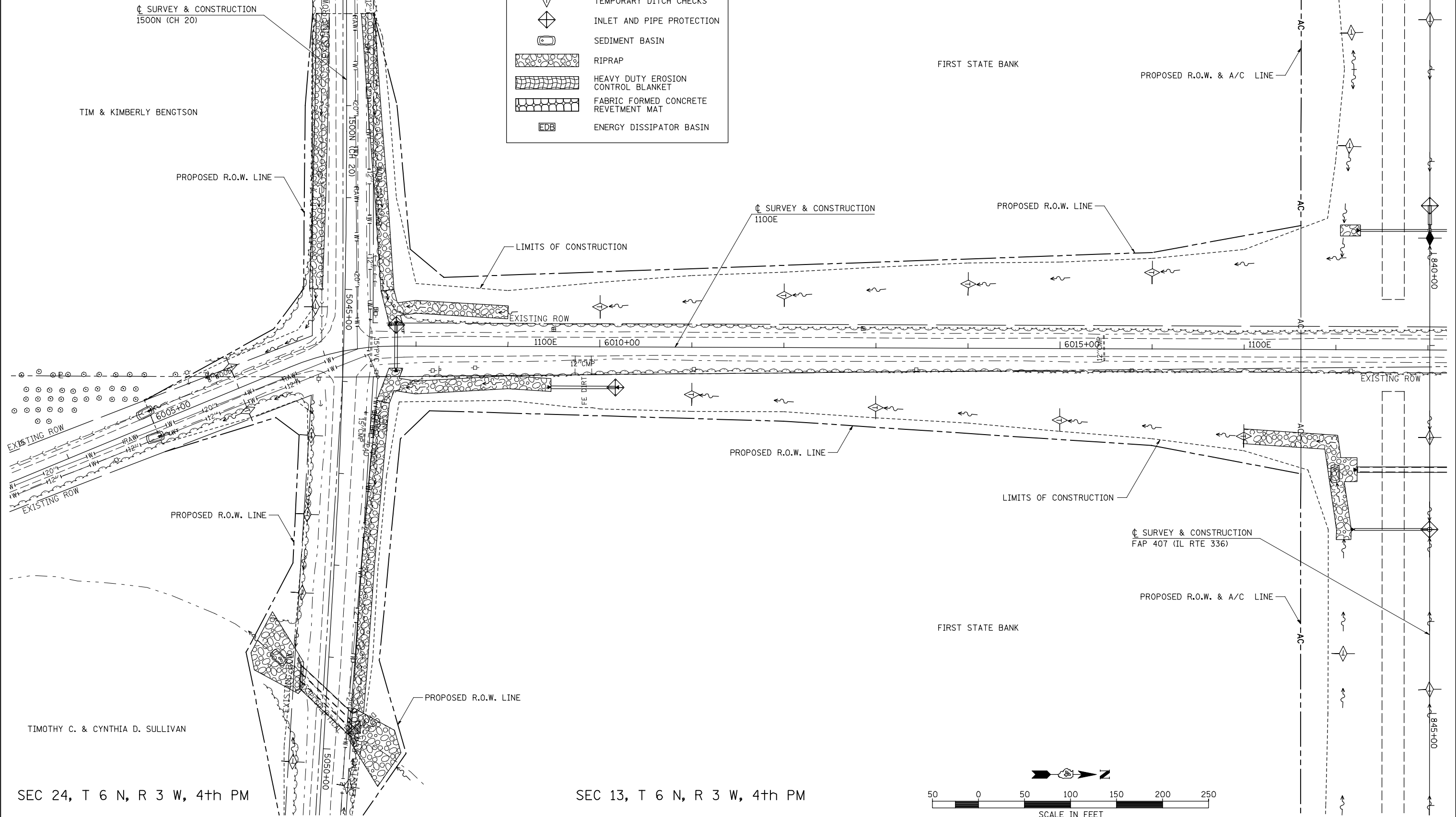


SEC 23, T 6 N, R 3 W, 4th PM

SEC 14, T 6 N, R 3 W, 4th PM

LEGEND	
	PERIMETER EROSION BARRIER
	TEMPORARY DITCH CHECKS
	INLET AND PIPE PROTECTION
	SEDIMENT BASIN
	RIPRAP
	HEAVY DUTY EROSION CONTROL BLANKET
	FABRIC FORMED CONCRETE REVETMENT MAT
	ENERGY DISSIPATOR BASIN

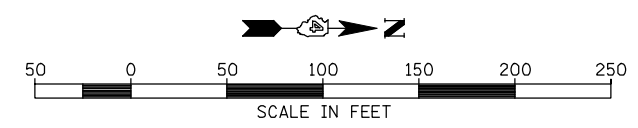


TIM & KIMBERLY BENGTON

TIMOTHY C. & CYNTHIA D. SULLIVAN

SEC 24, T 6 N, R 3 W, 4th PM

SEC 13, T 6 N, R 3 W, 4th PM



FILE NAME =	USER NAME = jdeen	DESIGNED - JRB	REVISED -
V:\Transportation\2891\Grading Plans\2891E\23(110E).dgn		DRAWN - JMO	REVISED -
PLOT SCALE = 100.00' / IN.		CHECKED - AWM	REVISED -
PLOT DATE = 12/12/2012		DATE - 12-12-12	REVISED -

**STATE OF ILLINOIS
DEPARTMENT OF TRANSPORTATION**

**FAP 407 (IL RTE 336)
EROSION CONTROL PLAN 1100E - STA. 6004+00 TO STA. 6019+00**

SCALE: 1"=50' SHEET NO. 1 OF 2 SHEETS STA. 6004+00 TO STA. 6019+00

F.A.P. RTE.	SECTION	COUNTY	TOTAL SHEETS	SHEET NO.
407	(55-3)A	McDONOUGH	671	203
			CONTRACT NO. 68A42	
ILLINOIS FED. AID PROJECT				