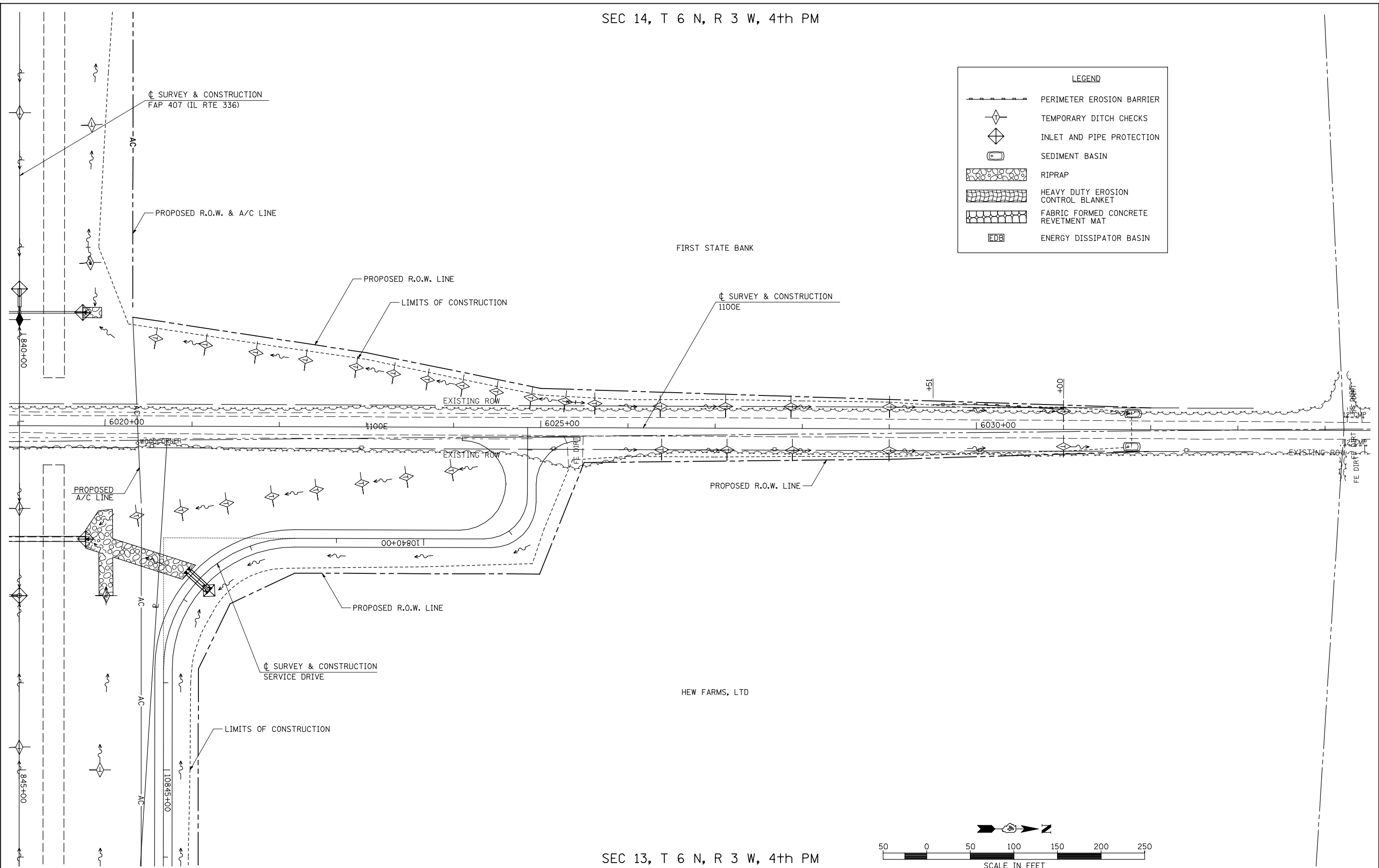


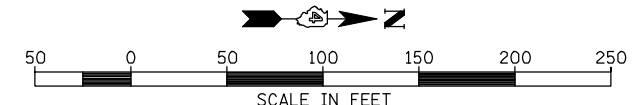
SEC 14, T 6 N, R 3 W, 4th PM



LEGEND

	PERIMETER EROSION BARRIER
	TEMPORARY DITCH CHECKS
	INLET AND PIPE PROTECTION
	SEDIMENT BASIN
	RIPRAP
	HEAVY DUTY EROSION CONTROL BLANKET
	FABRIC FORMED CONCRETE REVETMENT MAT
	ENERGY DISSIPATOR BASIN

SEC 13, T 6 N, R 3 W, 4th PM



FILE NAME =	USER NAME = jdeen	DESIGNED - JRB	REVISED -
V:\Transportation\2891\Grading Plans\2891E24(1100E).dgn		DRAWN - JMO	REVISED -
PLOT SCALE = 1/8" = 1' / IN.		CHECKED - AWM	REVISED -
PLOT DATE = 12/12/2012		DATE - 12-12-12	REVISED -

**STATE OF ILLINOIS
DEPARTMENT OF TRANSPORTATION**

FAP 407 (IL RTE 336)			
EROSION CONTROL PLAN 1100E STA. 6019+00 TO STA. 6034+00			
SCALE: 1"=50'	SHEET NO. 2 OF 2 SHEETS	STA. 6019+00 TO STA. 6034+00	

F.A.P. RTE. 407	SECTION (55-3)A	COUNTY McDONOUGH	TOTAL SHEETS 671	SHEET NO. 204
			CONTRACT NO. 68A42	
ILLINOIS FED. AID PROJECT				