

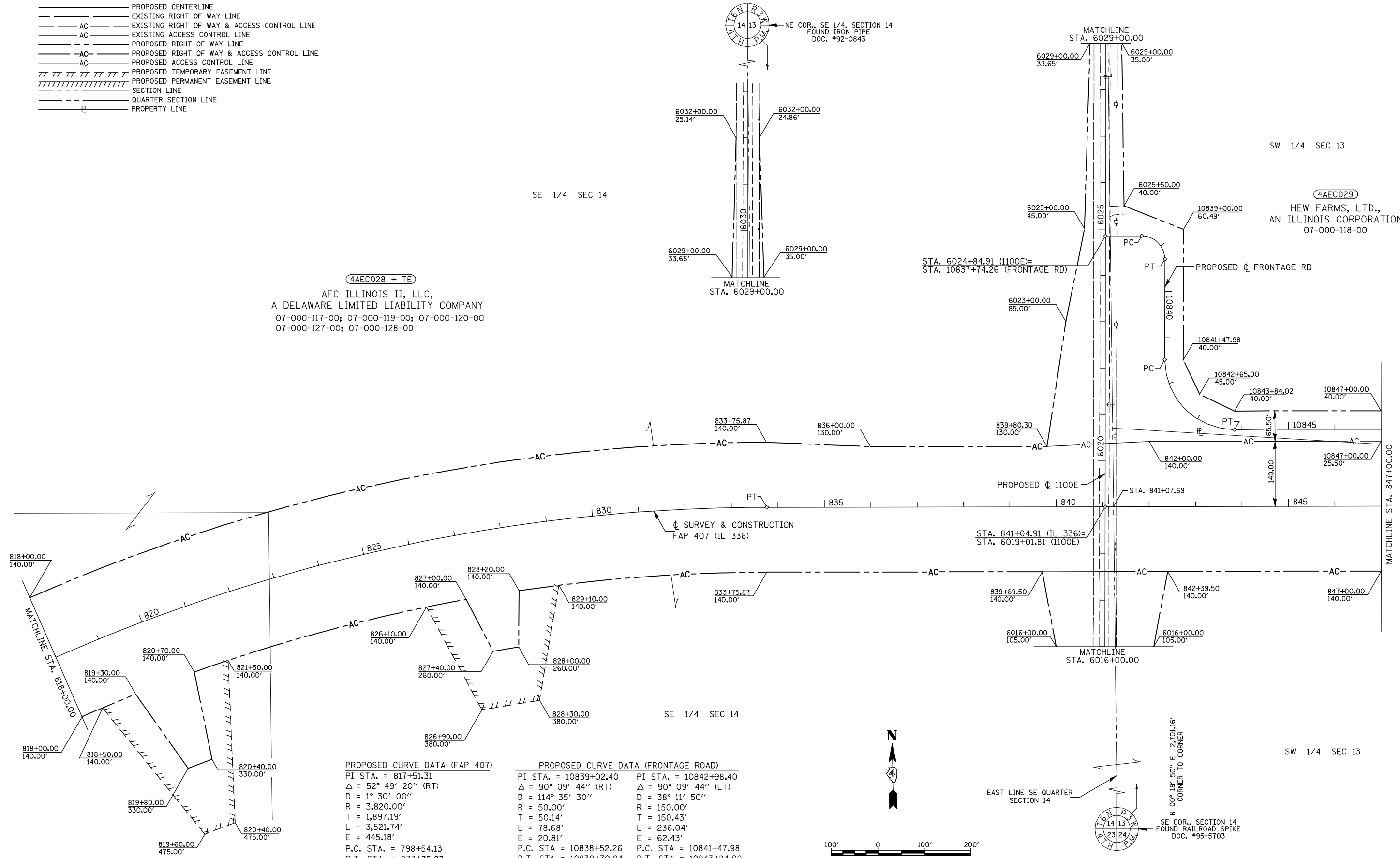
SEC 13 & 14, T 6 N, R 3 W, 4th PM

LEGEND

- PROPOSED CENTERLINE
- EXISTING RIGHT OF WAY LINE
- AC — EXISTING RIGHT OF WAY & ACCESS CONTROL LINE
- AC — EXISTING ACCESS CONTROL LINE
- PROPOSED RIGHT OF WAY LINE
- AC — PROPOSED RIGHT OF WAY & ACCESS CONTROL LINE
- AC — PROPOSED ACCESS CONTROL LINE
- ||||| PROPOSED TEMPORARY EASEMENT LINE
- ||||| PROPOSED PERMANENT EASEMENT LINE
- SECTION LINE
- QUARTER SECTION LINE
- P — PROPERTY LINE

4AEC028 + TE  
 AFC ILLINOIS II, LLC,  
 A DELAWARE LIMITED LIABILITY COMPANY  
 07-000-117-00; 07-000-119-00; 07-000-120-00  
 07-000-127-00; 07-000-128-00

SW 1/4 SEC 13  
 4AEC029  
 HEW FARMS, LTD.,  
 AN ILLINOIS CORPORATION  
 07-000-118-00



PROPOSED CURVE DATA (FAP 407)  
 PI STA. = 817+51.31  
 $\Delta = 52^\circ 49' 20''$  (RT)  
 D =  $1^\circ 30' 00''$   
 R = 3,820.00'  
 T = 1,897.19'  
 L = 3,521.74'  
 E = 445.18'  
 P.C. STA. = 798+54.13  
 P.T. STA. = 833+75.87

PROPOSED CURVE DATA (FRONTAGE ROAD)

PI STA. = 10839+02.40	PI STA. = 10842+98.40
$\Delta = 90^\circ 09' 44''$ (RT)	$\Delta = 90^\circ 09' 44''$ (LT)
D = $114^\circ 35' 30''$	D = $38^\circ 11' 50''$
R = 50.00'	R = 150.00'
T = 50.14'	T = 150.43'
L = 78.68'	L = 236.04'
E = 20.81'	E = 62.43'
P.C. STA. = 10838+52.26	P.C. STA. = 10841+47.98
P.T. STA. = 10839+30.94	P.T. STA. = 10843+84.02

FILE NAME W:\Transportation\2891\Grading Plans\2891ROWPlan1.dgn	USER NAME = jdeen	DESIGNED -	REVISED - 05/2012
PLOT SCALE = 200.0000' / IN.	CHECKED - JWD	DRAWN - DJH	REVISED -
PLOT DATE = 12/12/2012	DATE - 05/2012		REVISED -

STATE OF ILLINOIS  
 DEPARTMENT OF TRANSPORTATION

<b>RIGHT OF WAY PLANS</b>		F.A.P. RTE.	SECTION	COUNTY	TOTAL SHEETS	SHEET NO.
SCALE: 1" = 100'		407	(55-3)A	McDONOUGH	671	252
PROJECT	JOB NO. R-94-004-11	CONTRACT NO. 68A42				
SHEET NO. 11 OF 15 SHEETS	STA. 818+00.00 TO STA. 847+00.00	FED. ROAD DIST. NO. ILLINOIS FED. AID PROJECT				