

SEC 13, T 6 N, R 3 W, 4th PM

PROPOSED CURVE DATA (RAMPS)

PI STA. = 324+77.74	PI STA. = 331+58.47
$\Delta = 35^\circ 32' 28''$ (LT)	$\Delta = 36^\circ 15' 54''$ (RT)
D = 11° 26' 11"	D = 7° 29' 23"
R = 501.00'	R = 765.00'
T = 160.57'	T = 250.52'
L = 310.77'	L = 484.20'
E = 25.10'	E = 39.98'
P.C. STA = 323+17.18	P.C. STA = 329+07.95
P.T. STA = 326+27.95	P.T. STA = 333+92.15

PI STA. = 210+51.11	PI STA. = 216+92.54
$\Delta = 36^\circ 19' 57''$ (RT)	$\Delta = 41^\circ 15' 36''$ (LT)
D = 7° 29' 23"	D = 16° 05' 40"
R = 765.00'	R = 356.00'
T = 251.02'	T = 134.02'
L = 485.10'	L = 256.36'
E = 40.13'	E = 24.39'
P.C. STA = 208+00.09	P.C. STA = 215+58.52
P.T. STA = 212+85.19	P.T. STA = 218+14.88

SE 1/4 SEC 13

SW 1/4 SEC 13

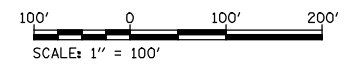
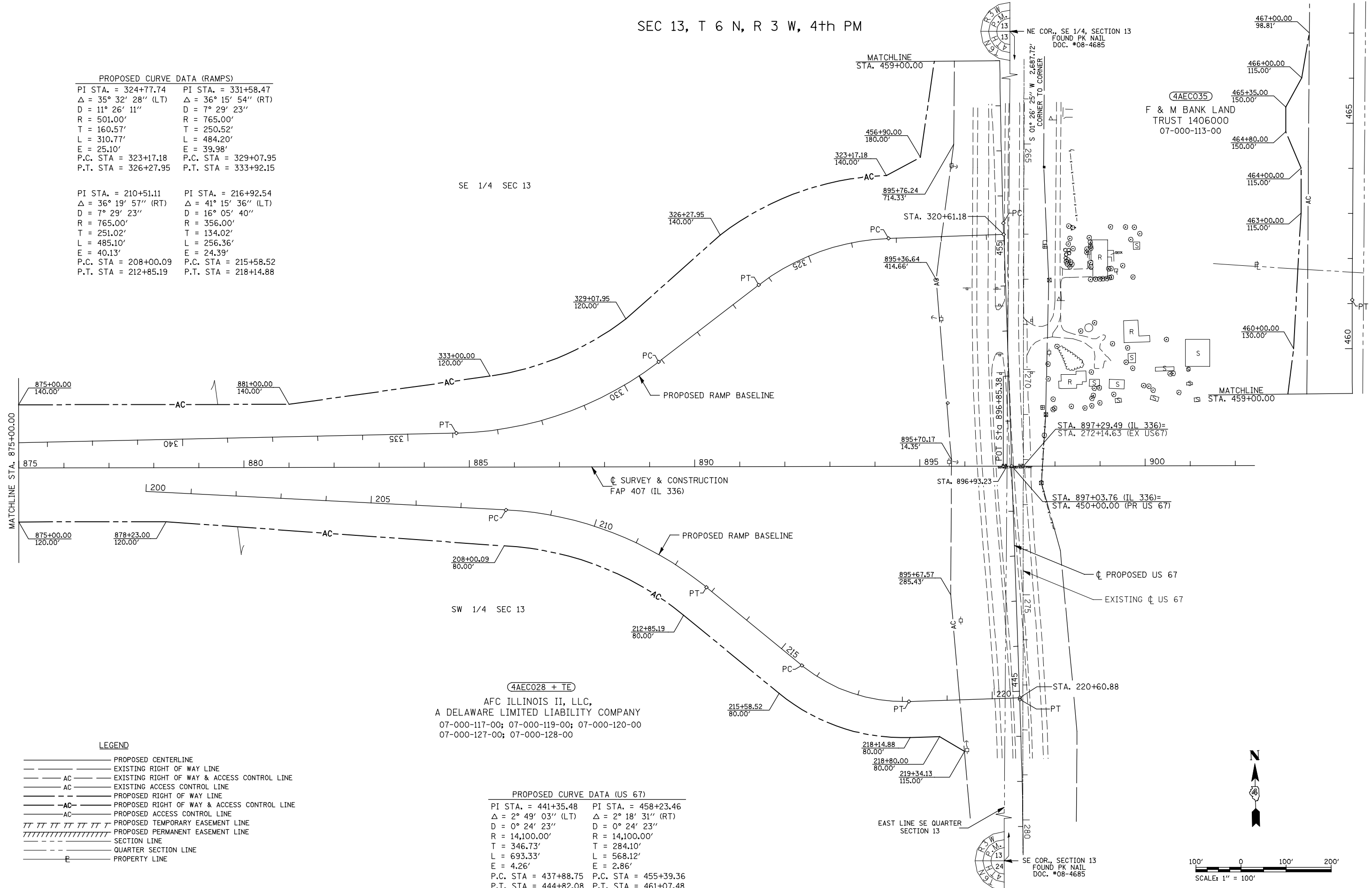
4AEC028 + TE
 AFC ILLINOIS II, LLC,
 A DELAWARE LIMITED LIABILITY COMPANY
 07-000-117-00; 07-000-119-00; 07-000-120-00
 07-000-127-00; 07-000-128-00

PROPOSED CURVE DATA (US 67)

PI STA. = 441+35.48	PI STA. = 458+23.46
$\Delta = 2^\circ 49' 03''$ (LT)	$\Delta = 2^\circ 18' 31''$ (RT)
D = 0° 24' 23"	D = 0° 24' 23"
R = 14,100.00'	R = 14,100.00'
T = 346.73'	T = 284.10'
L = 693.33'	L = 568.12'
E = 4.26'	E = 2.86'
P.C. STA = 437+88.75	P.C. STA = 455+39.36
P.T. STA = 444+82.08	P.T. STA = 461+07.48

LEGEND

- PROPOSED CENTERLINE
- EXISTING RIGHT OF WAY LINE
- AC — EXISTING RIGHT OF WAY & ACCESS CONTROL LINE
- AC — EXISTING ACCESS CONTROL LINE
- PROPOSED RIGHT OF WAY LINE
- AC — PROPOSED RIGHT OF WAY & ACCESS CONTROL LINE
- AC — PROPOSED ACCESS CONTROL LINE
- TTTTTTTTTTT PROPOSED TEMPORARY EASEMENT LINE
- ////////// PROPOSED PERMANENT EASEMENT LINE
- SECTION LINE
- QUARTER SECTION LINE
- E — PROPERTY LINE



FILE NAME W:\Transportation\2891\Grading Plans\2891\ROWPlan13.dgn	USER NAME = jdean	DESIGNED -	REVISED - 05/2012	STATE OF ILLINOIS DEPARTMENT OF TRANSPORTATION	RIGHT OF WAY PLANS		F.A.P. RTE. 407	SECTION (55-3)A	COUNTY McDONOUGH	TOTAL SHEETS 671	SHEET NO. 254	
PLOT SCALE = 200.0000' / IN.	CHECKED - JWD	REVISOR -	REVISOR -		PROJECT SHEET NO. 13 OF 15 SHEETS	JOB NO. R-94-004-11	CONTRACT NO. 68A42					
PLOT DATE = 12/12/2012	DATE - 05/2012	REVISOR -	REVISOR -		SCALE: 1" = 100'	STA. 875+00.00 TO STA. 900+00.00	FED. ROAD DIST. NO. ILLINOIS FED. AID PROJECT					