

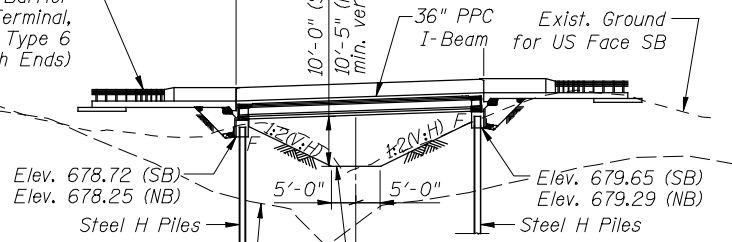
Bench Mark: BM HEI 14; RR Spike in a power pole on the north side of 1250N (Adams St.), located 30' LT of Sta. 1005+48, Elevation 693.68.

- Notes: 1). Drainage flows are minimal through the natural ravine that is serving as the path for the Wildlife Crossing.
 2). The embankment configuration shown shall be the minimum that must be placed and compacted prior to construction of the abutments.

Existing Structure: None

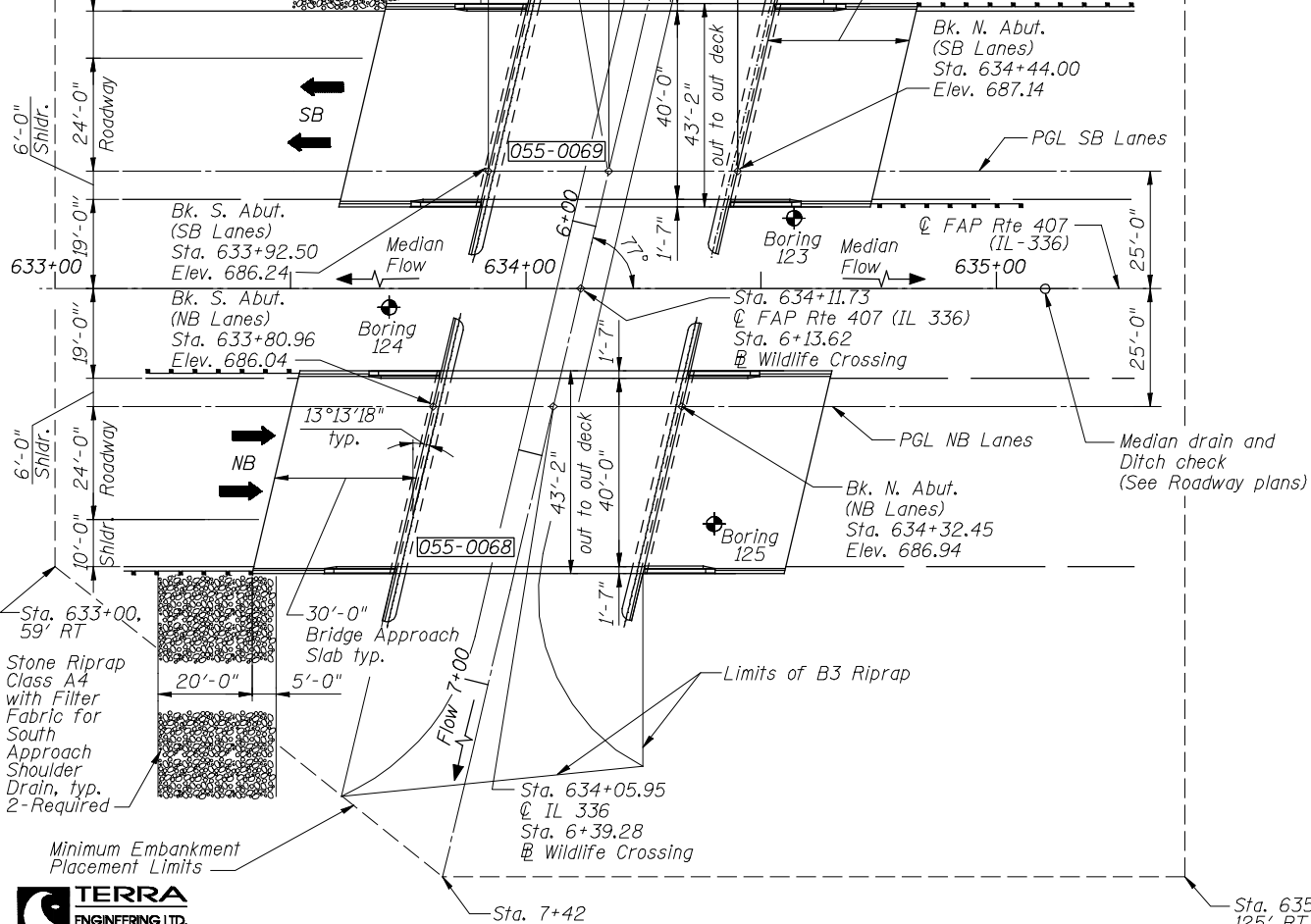
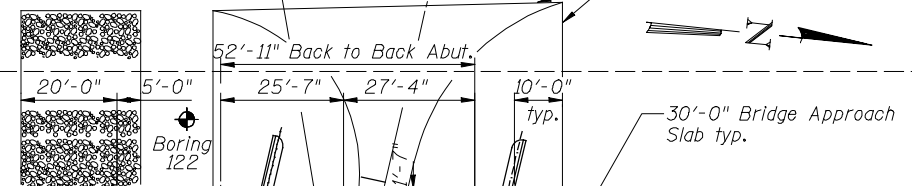
Bridge Omission
 Sta. 633+80.29 to Sta. 634+33.20 (SN 055-0068)
 Sta. 633+92.04 to 634+44.94 (SN 055-0069)

Traffic Barrier Terminal, Std. 631031 Type 6 (Approach Ends)

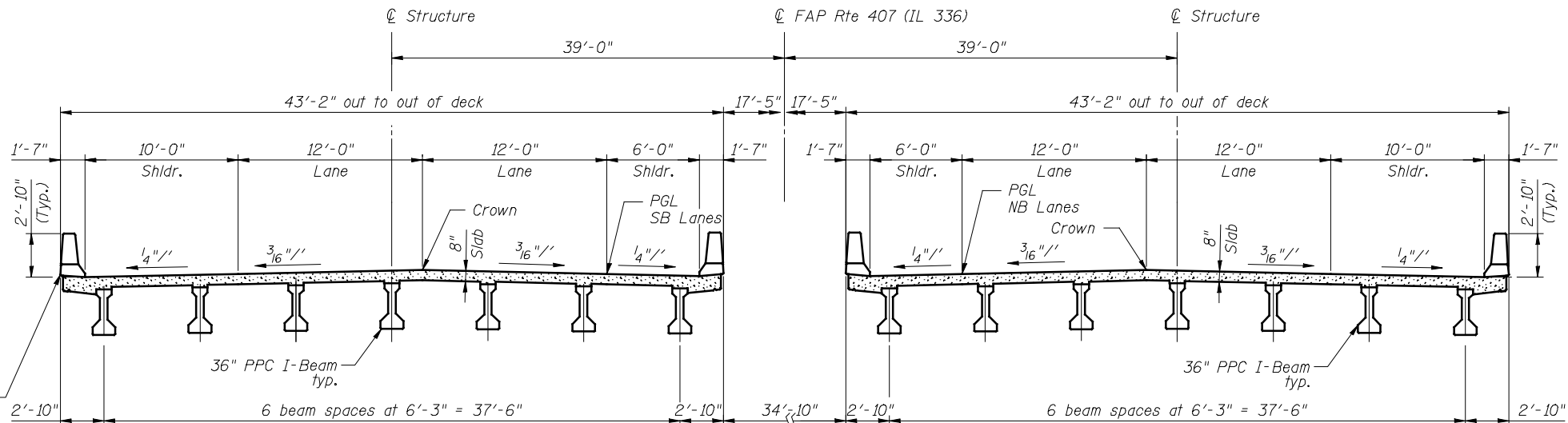


ELEVATION
 (Looking Upstream)

Sta. 634+17.60
 @ IL 336
 Sta. 5+87.93
 Wildlife Crossing



PLAN



CROSS SECTION THRU MAIN SPAN LOOKING UP STATION

HIGHWAY CLASSIFICATION

F.A.P. 407 (IL 336)
 Functional Class: Freeway
 ADT: 3045 (2015); 3715 (2035)
 DHV: 305 (2015); 372 (2035)
 ADTT = 10%
 Speed: 65 m.p.h. (posted); 70 m.p.h. (design)
 Two-way traffic Directional Dist. 50:50

LOADING HL 93

Allow 50#/sq. ft. for future wearing surface.

DESIGN SPECIFICATIONS

2010 AASHTO LRFD Bridge Design Specifications
 5th Edition with 2010 Interims

DESIGN STRESSES

FIELD UNITS

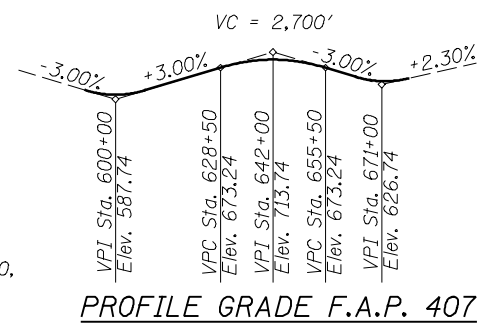
$f'_c = 3,500$ psi
 $f_y = 60,000$ psi (Reinforcement)

PRECAST PRESTRESSED UNITS

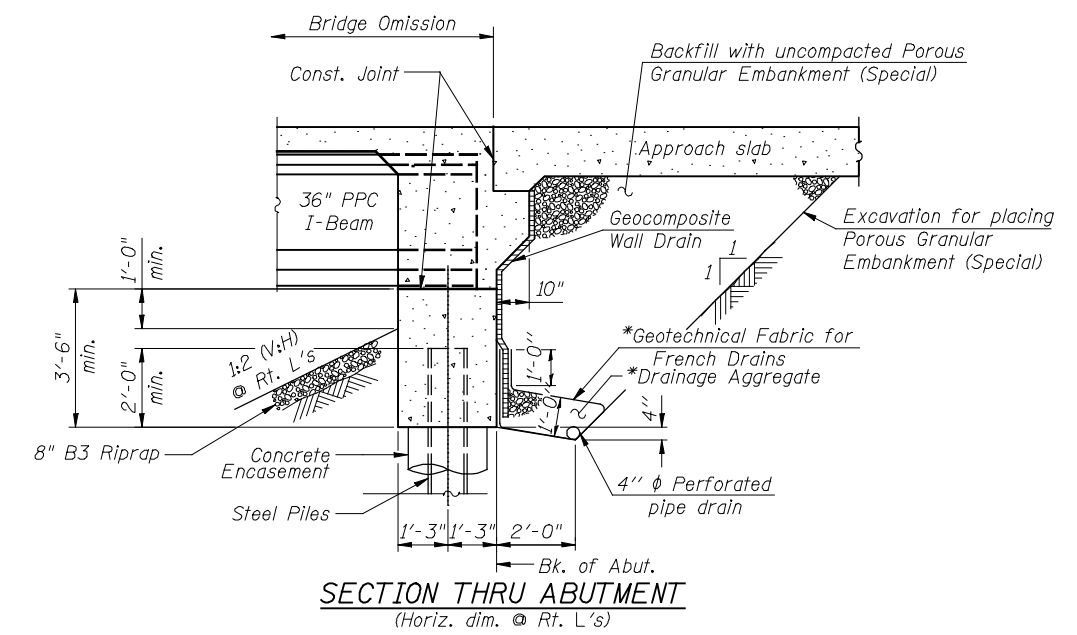
$f'_c = 6,000$ psi
 $f'_{cl} = 5,000$ psi
 $f_{pu} = 270$ ksi ($\frac{1}{2}$ " low lax. strands)
 $f_{pbl} = 202.5$ ksi ($\frac{1}{2}$ " low lax. strand)

SEISMIC DATA

Seismic Performance Zone (SPZ) = 1
 Design Spectral Acceleration at 1.0 sec. (S_{D1}) = 0.11g
 Design Spectral Acceleration at 0.2 sec. (S_{D5}) = 0.17g
 Soil Site Class = D



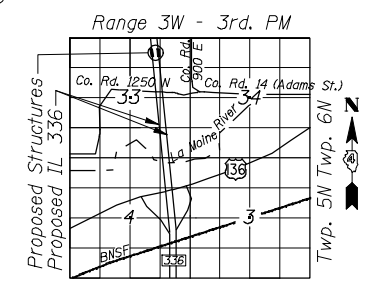
PROFILE GRADE F.A.P. 407



SECTION THRU ABUTMENT
 (Horiz. dim. @ Rt. L's)



PROFILE GRADE
 (along Wildlife Crossing)



LOCATION SKETCH

GENERAL PLAN
 F.A.P. 407 (ILLINOIS 336)-SECTION 55-3
 OVER WILDLIFE CROSSING #1
 McDONOUGH COUNTY
 STATION 634+11.73
 STRUCTURE NO. 055-0068 (NB)
 STRUCTURE NO. 055-0069 (SB)



FILE NAME: #FILE#
 USER NAME: jdeen
 PLOT SCALE: 48.000' / IN.
 PLOT DATE: 12/12/2012

DESIGNED - OY	REVISED -
CHECKED - DA	REVISED -
DRAWN - CM	REVISED -
CHECKED - JB	REVISED -

STATE OF ILLINOIS
DEPARTMENT OF TRANSPORTATION

GENERAL PLAN
STRUCTURE NO. 055-0068 & 0069
 SHEET NO. 1 OF 1 SHEETS

F.A.P. RTE. 407	SECTION 55-3HB-1	COUNTY McDONOUGH	TOTAL SHEETS 671	SHEET NO. 258
			CONTRACT NO. 68418	
ILLINOIS FED. AID PROJECT				