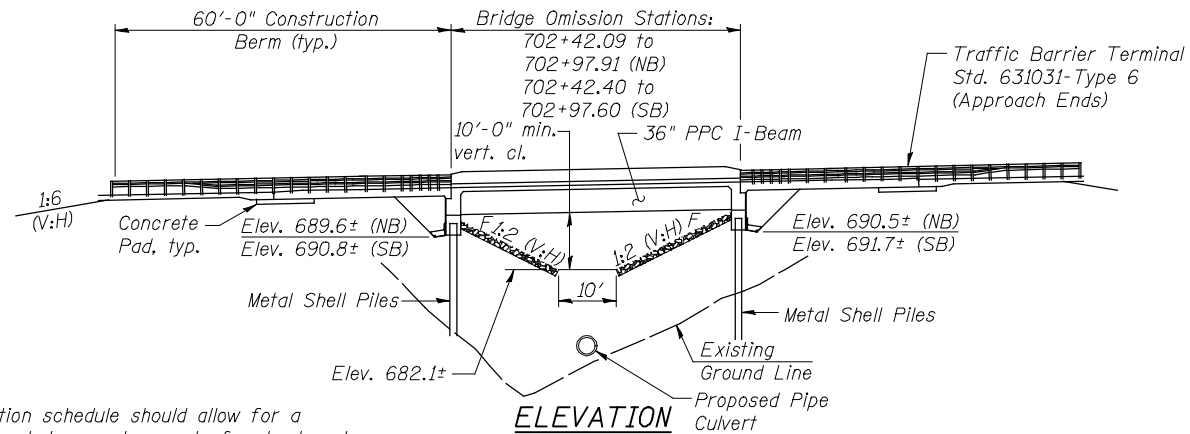


Benchmark: RR Spike on northeast side of 34" Locust Tree, sta. 700+94.92, 22.73' LT, Elev. 696.64
 Existing Structure: None



Note:
 The construction schedule should allow for a 30 day a delay between placement of embankment fill and installation of the abutment piles to allow for consolidation of the underlying soils. Settlement of the fill should be monitored during this period to confirm that the settlement is complete.

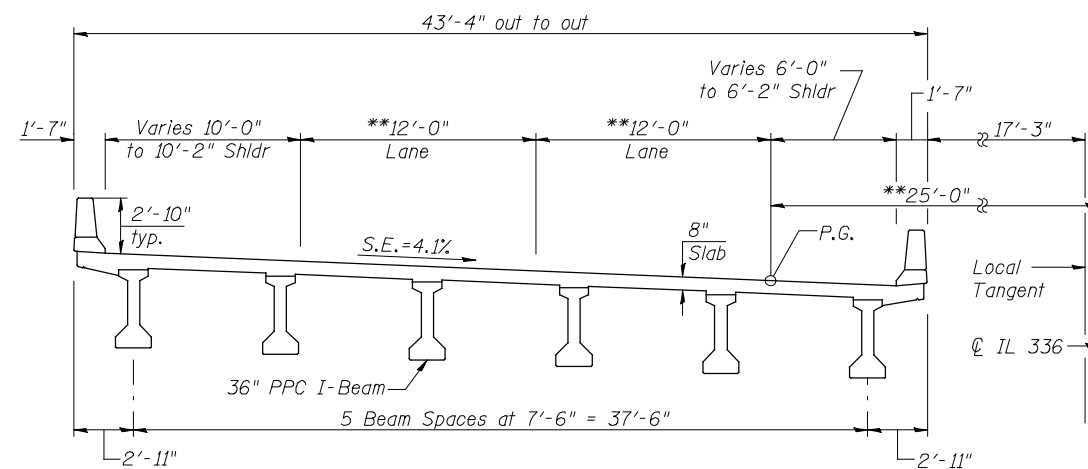
ELEVATION

CURVE DATA

$\Delta = 60^{\circ}-09'-14"$ (RT)
 $D = 1^{\circ}-16'-24"$
 $T = 2,606.15'$
 $L = 4,724.48'$
 $E = 700.19'$
 $R = 4,500.00'$
 $S.E. = 4.1\%$
 $P.C. = Sta. 659+43.10$
 $P.T. = Sta. 706+67.58$
 $P.I. = Sta. 685+49.24$

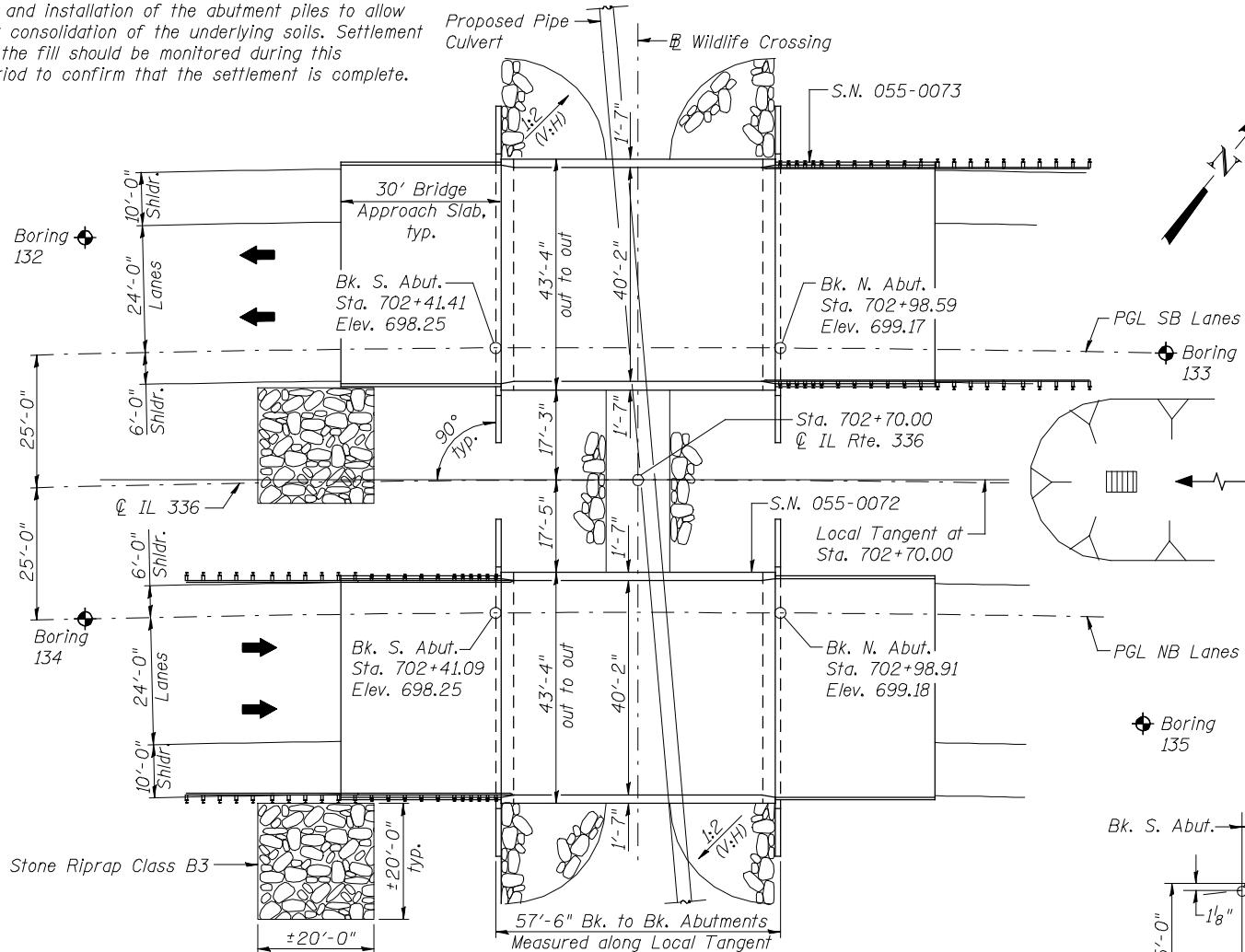
HIGHWAY CLASSIFICATION

F.A.P. 407 (IL 336)
 Functional Class: Freeway
 ADT: 3045 (2015); 3715 (2035)
 DHV: 305 (2015); 372 (2035)
 ADTT = 10%
 Design Speed: 70 m.p.h.
 Posted Speed: 65 m.p.h.
 Two-Way Traffic
 Directional Distribution: 50:50

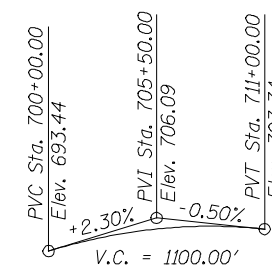


CROSS SECTION

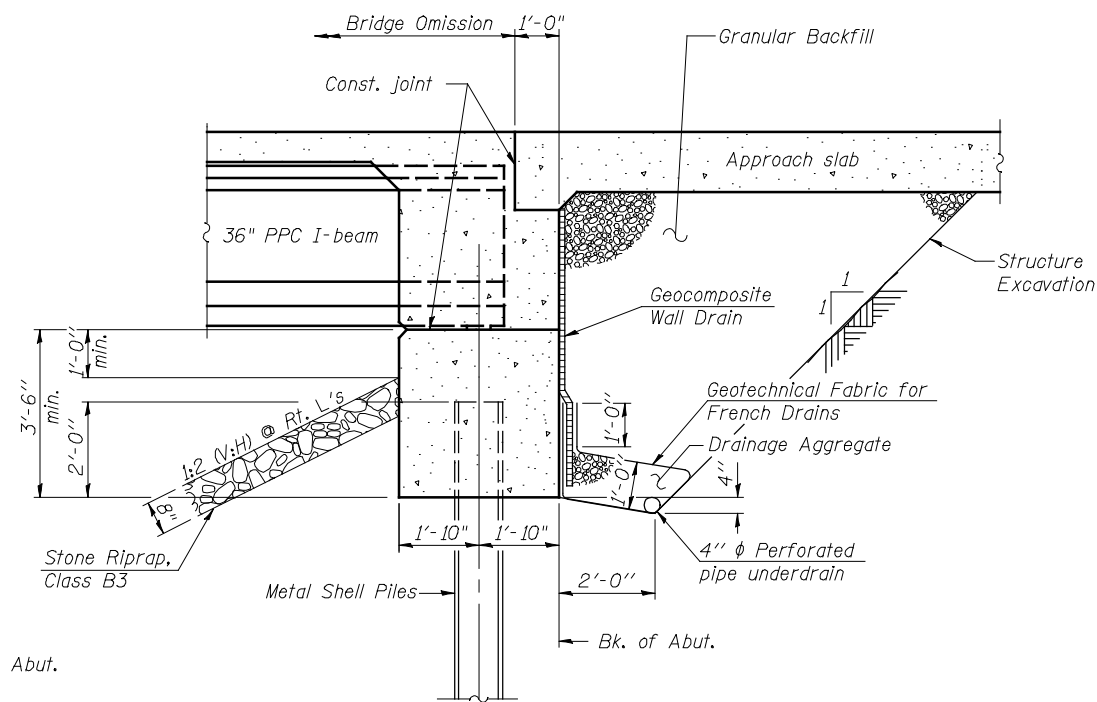
(S.N. 055-0073 Looking North shown, S.N. 055-0072 similar)



PLAN



PROFILE GRADE
 (along P.G.L. IL 336)



SECTION THRU ABUTMENT

DESIGN STRESSES

FIELD UNITS

$f'_c = 3,500$ psi
 $f_y = 60,000$ psi (Reinforcement)

PRECAST PRESTRESSED UNITS

$f'_c = 6,000$ psi
 $f'_{ci} = 5,000$ psi
 $f_{pu} = 270,000$ psi ($\frac{1}{2}$ " ϕ low lax. strands)
 $f_{pbt} = 201,960$ psi ($\frac{1}{2}$ " ϕ lox lax. strands)

DESIGN SPECIFICATIONS

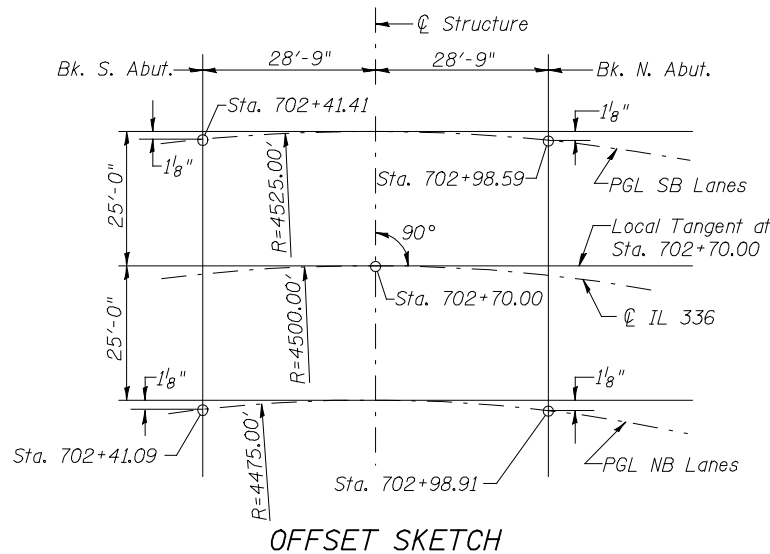
2012 AASHTO LRFD Bridge Design Specifications, 6th Edition

LOADING HL-93

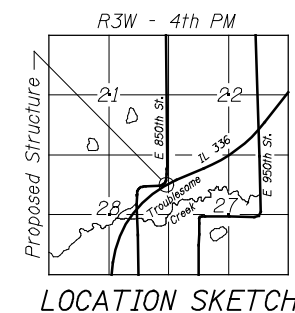
Allow 50#/sq. ft. for future wearing surface.

SEISMIC DATA

Seismic Performance Zone (SPZ) = 1
 Design Spectral Acceleration at 1.0 sec. (S_{D1}) = 0.08g
 Design Spectral Acceleration at 0.2 sec. (S_{D5}) = 0.13g
 Soil Site Class = C



OFFSET SKETCH



LOCATION SKETCH

**NOT FOR CONSTRUCTION
 FOR ROADWAY REFERENCE ONLY**

**GENERAL PLAN AND ELEVATION
 IL 336 OVER WILDLIFE CROSSING #2
 F.A.P. 407 - SECTION 55-3
 McDONOUGH COUNTY
 STATION 702+70.00
 STRUCTURE NO. 055-0072 (NB)
 STRUCTURE NO. 055-0073 (SB)**



USER NAME =
 FILE NAME =
 PLOT SCALE =
 PLOT DATE =

DESIGNED - MTH
 CHECKED - ADB
 DRAWN - TBP
 CHECKED - MTH

REVISED -
 REVISED -
 REVISED -
 REVISED -

**STATE OF ILLINOIS
 DEPARTMENT OF TRANSPORTATION**

**FAP 407 (IL RTE 336)
 WILDLIFE CROSSING #2 TS & L**

SHEET NO. 1 OF 1 SHEETS

F.A.P. RTE. 407	SECTION 55-3	COUNTY McDONOUGH	TOTAL SHEETS 671	SHEET NO. 261
			CONTRACT NO. 68418	

ILLINOIS FED. AID PROJECT