

BM HE1 33:
R.R. spike in ±18" tree, ±¼ mile N. of E. Lamoine River,
East side of field entrance. ±45' Rt Sta 598+00±
Elev. 602.33

No existing structure.

INDEX OF SHEETS

- 1 General Plan and Elevation
- 2 Cast In Place Culvert Details

TOTAL BILL OF MATERIAL

ITEM	UNIT	TOTAL
Reinforcement Bars	Pound	19,560
Concrete Box Culverts	Cu Yd	139.4
Porous Granular Embankment	Cu Yd	551

DESIGN SCOUR ELEVATION TABLE

Design Scour Elevation (ft.)	Downstream	Upstream
	595.63	596.72

DESIGN SPECIFICATIONS

2012 AASHTO LRFD Bridge Design Specifications
6th Edition

DESIGN STRESSES

FIELD UNITS

$f'_c = 3,500$ psi
 $f_y = 60,000$ psi (Reinforcement)

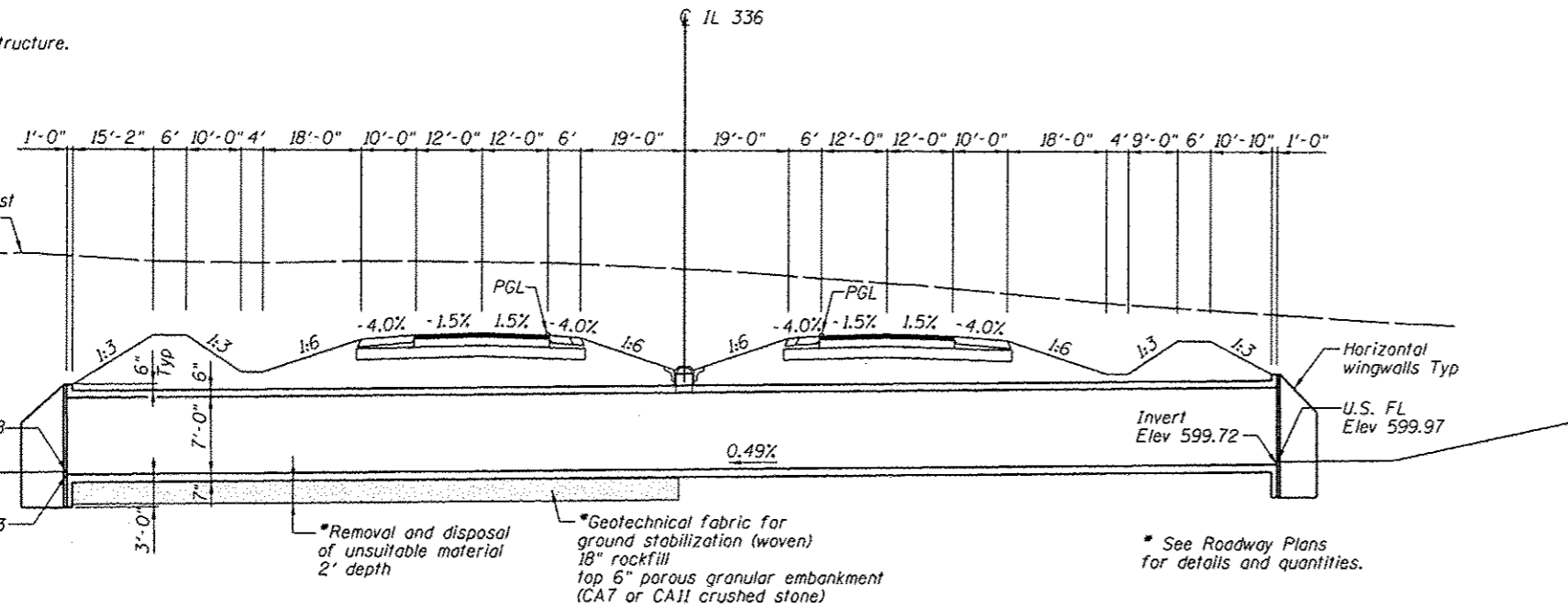
LOADING HL-93

Allow 50#/sq. ft. for future wearing surface.

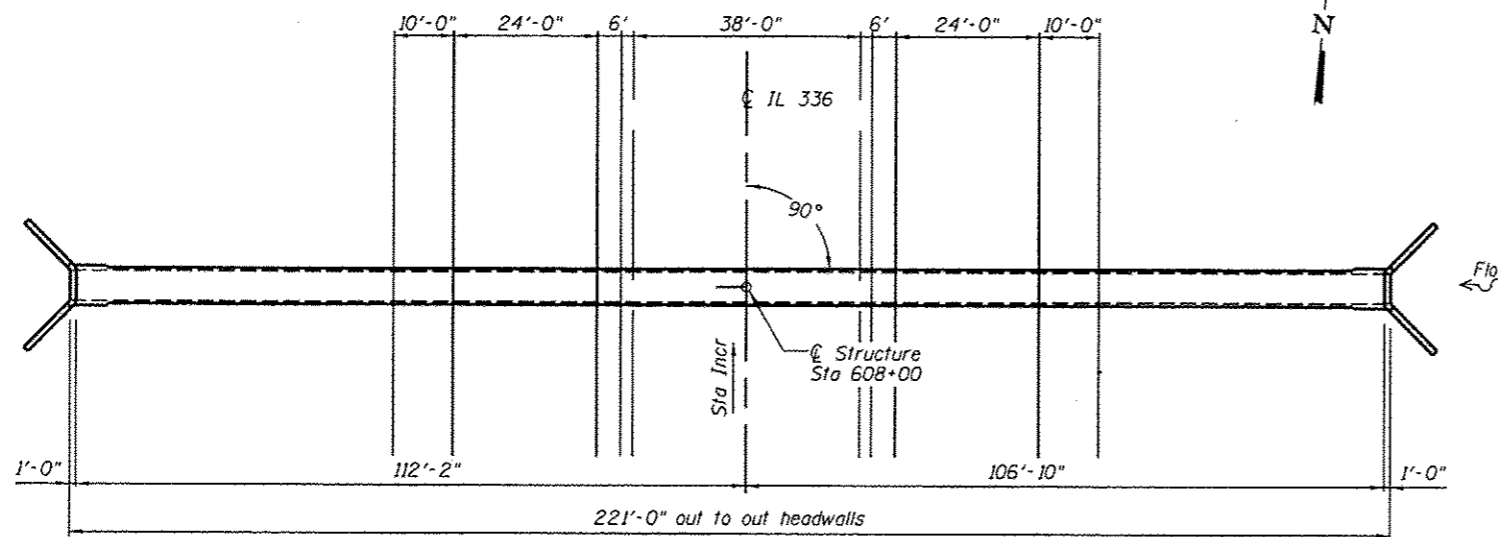
GENERAL NOTES:

Precast alternate is not allowed.

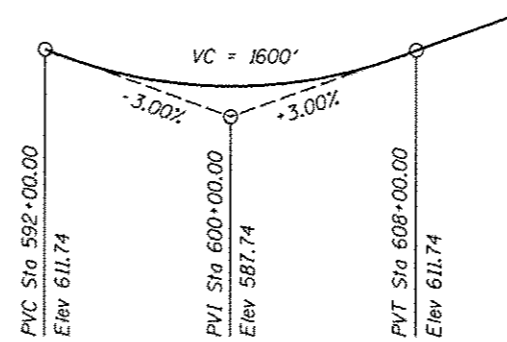
For porous granular embankment details, see Detail of Excavation and Backfill for Box Culverts Sheet.



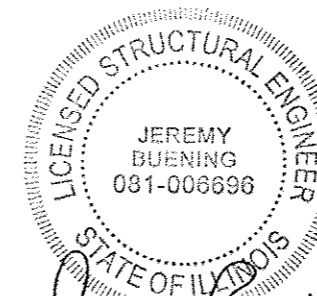
LONGITUDINAL SECTION



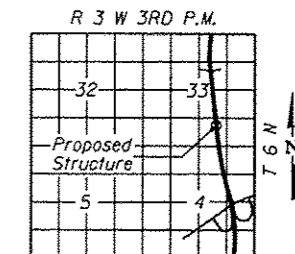
PLAN



PROFILE GRADE - IL 336



Jeremy Buening, P.E., S.E. Date 12/3/12
License Expires 11/30/14



LOCATION SKETCH

GENERAL PLAN AND ELEVATION,

F.A.I. 407 (IL 336)
OVER DRAINAGE DITCH
MCDONOUGH COUNTY
STATION 608+00.00

FILE NAME: I:\001\5686 - HE1 IL 336\1000.Structural\Box Culvert\1\plan608+00.dgn



USER NAME	• jbuening
PLOT TIME	• 8:35:11 AM
PLOT SCALE	• 32.0000' / in.
PLOT DATE	• 1/16/2013

DESIGNED	ACB
CHECKED	JMB
DRAWN	RLK
CHECKED	JMB

REVISED	-
REVISED	-
REVISED	-
REVISED	-

STATE OF ILLINOIS
DEPARTMENT OF TRANSPORTATION

GENERAL PLAN AND ELEVATION
BOX CULVERT AT STA 608+00.00

SHEET NO. 1 OF 2 SHEETS

F.A. RTE.	SECTION	COUNTY	TOTAL SHEETS	SHEET NO.
407	55-3	MCDONOUGH	167	1263
			CONTRACT NO. 68418	

ILLINOIS FED. AID PROJECT