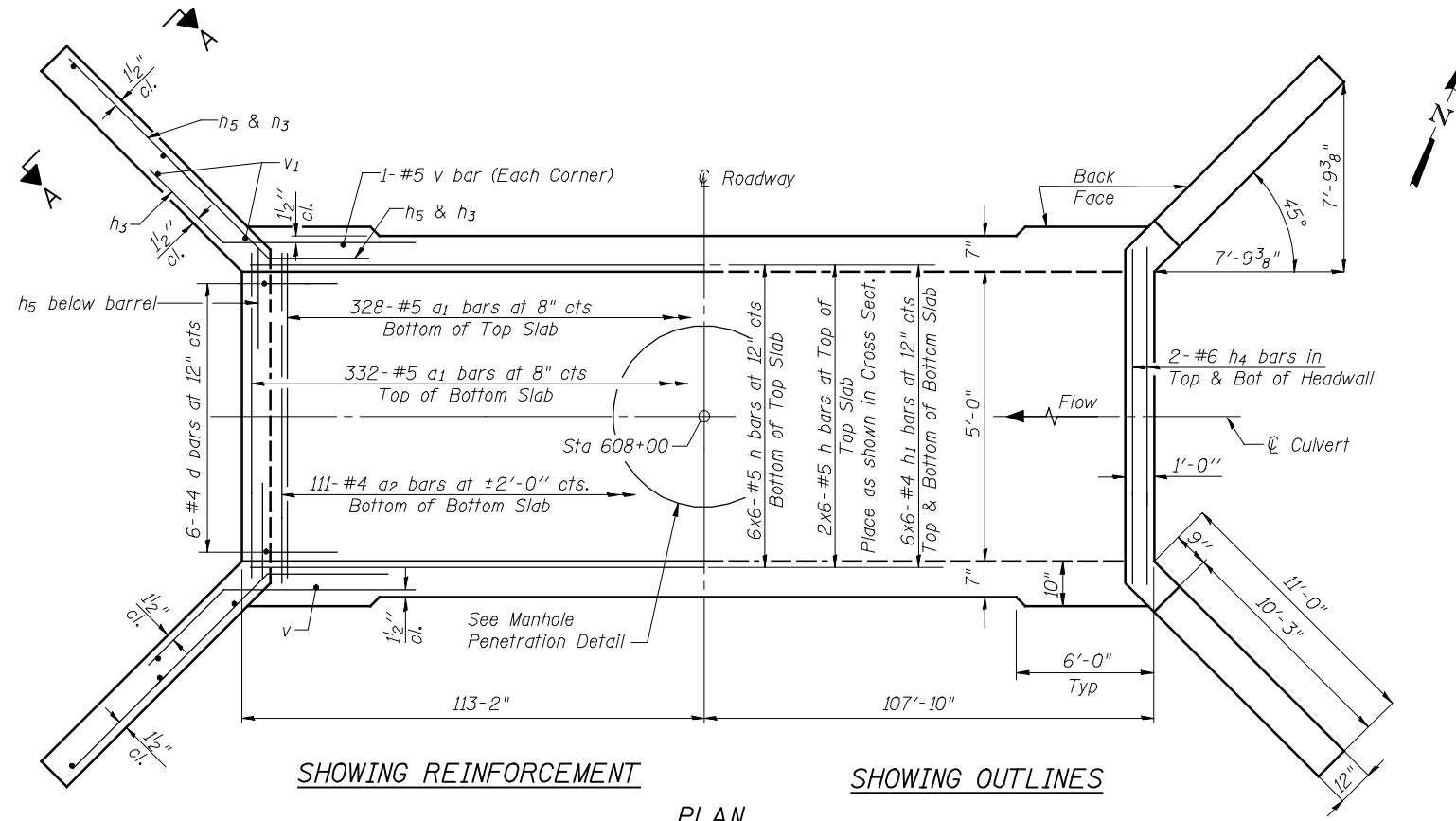


HALF LONG. SECTION

HALF ELEVATION



SHOWING REINFORCEMENT

SHOWING OUTLINES

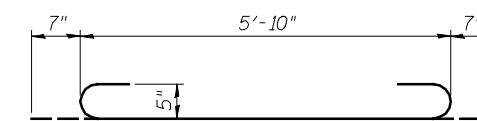
PLAN

NOTES

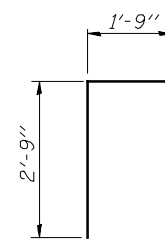
A distance of half the length of the wingwall but not less than six feet of the barrel shall be poured monolithically with the wingwalls.
 Reinforcement bars shall conform to the requirements of ASTM A706 Grade 60.
 Bars indicated thus 12 x 4-#5 etc. indicates 12 lines of bars with 4 lengths per line.
 See Roadway Plans for manhole details and quantities

MIN BAR LAP

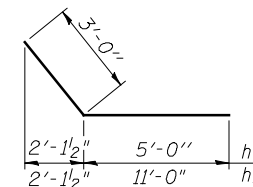
#4 bar = 2'-0"
 #5 bar = 2'-6"



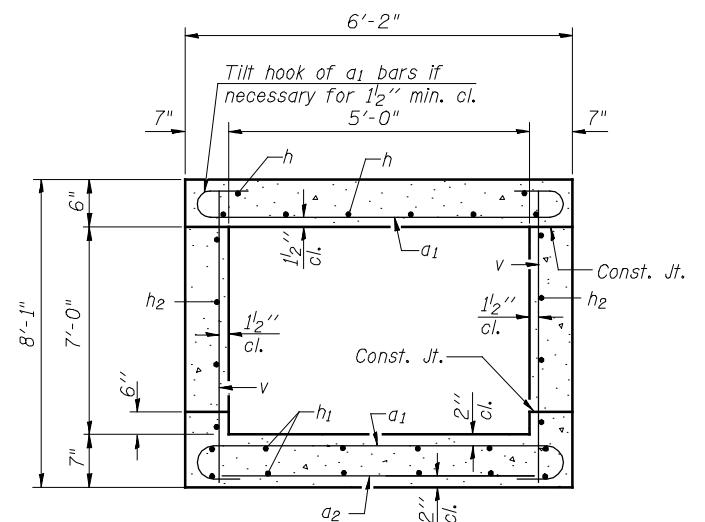
BAR a1



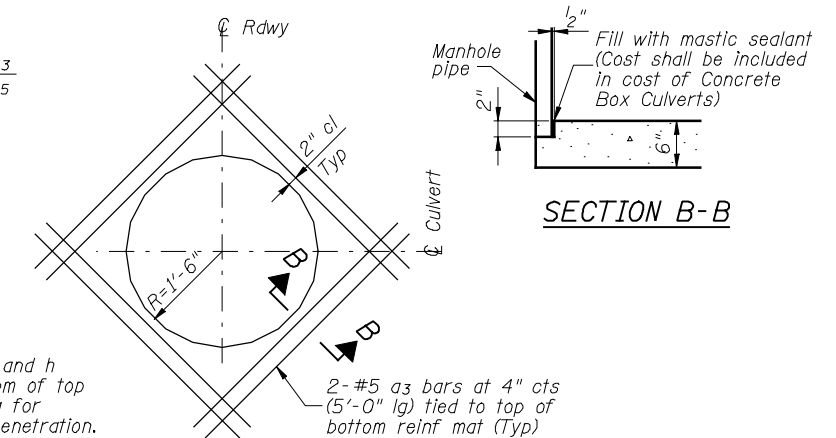
BAR d



BARS h3 & h5

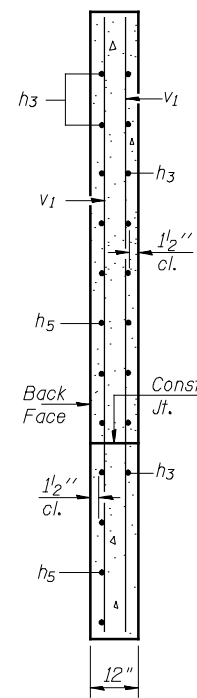


SECTION THRU BARREL



MANHOLE PENETRATION DETAIL

(Top Slab)



SECTION A-A

Field cut a1 and h bars in bottom of top slab, allowing for 2\"/>

SECTION THRU HEADWALL

(Up Stream End Only)

BILL OF MATERIAL

Bar	No.	Size	Length	Shape	
a1	660	#5	7'-0"	U	
a2	113	#4	5'-10"	—	
a3	8	#5	5'-0"	—	
d	12	#4	4'-6"	T	
h	48	#5	38'-11"	—	
h1	72	#4	38'-5"	—	
h2	112	#5	33'-9"	—	
h3	48	#6	8'-0"	—	
h4	8	#6	5'-8"	—	
h5	44	#6	14'-0"	—	
v	594	#5	7'-9"	—	
v1	16	#4	10'-8"	—	
Concrete Box Culverts				Cu. Yd.	139.4
Reinforcement Bars				Pound	19,560

FILE NAME = v:\tempor-tasoon\2891\grading_plans\Chastain Final\culv608+00.dgn

SSB-H-0

7-1-10

HOMER I. CHASTAIN & ASSOCIATES, LLP CONSULTING ENGINEERS 184-001897

USER NAME = jdean
 PLOT TIME = *TIME*
 PLOT SCALE = 2:0 "/>

DESIGNED ACB
 CHECKED JMB
 DRAWN RLK
 CHECKED JMB

REVISED -
 REVISED -
 REVISED -
 REVISED -

STATE OF ILLINOIS DEPARTMENT OF TRANSPORTATION

CAST IN PLACE CULVERT DETAILS STATION 608+00

SHEET NO. 2 OF 2 SHEETS

F.A.P. RTE.	SECTION	COUNTY	TOTAL SHEETS	SHEET NO.
407	(55-3A)	MCDONOUGH	671	264

CONTRACT NO. 68A42
 ILLINOIS FED. AID PROJECT