

BM HE1 35:
Chiseled "□" on N.E. corner concrete patio/boat house
N. side of lake, E. of Sta 643+00, ±300' Rt
Elev. 695.54

No existing structure.

Measured at
Rt L's to @ Roadway

INDEX OF SHEETS

- 1 General Plan and Elevation
- 2 Cast In Place Culvert Details
- 3 Cast In Place Culvert Details

DESIGN SPECIFICATIONS

2012 AASHTO LRFD Bridge Design Specifications
6th Edition

DESIGN STRESSES

FIELD UNITS

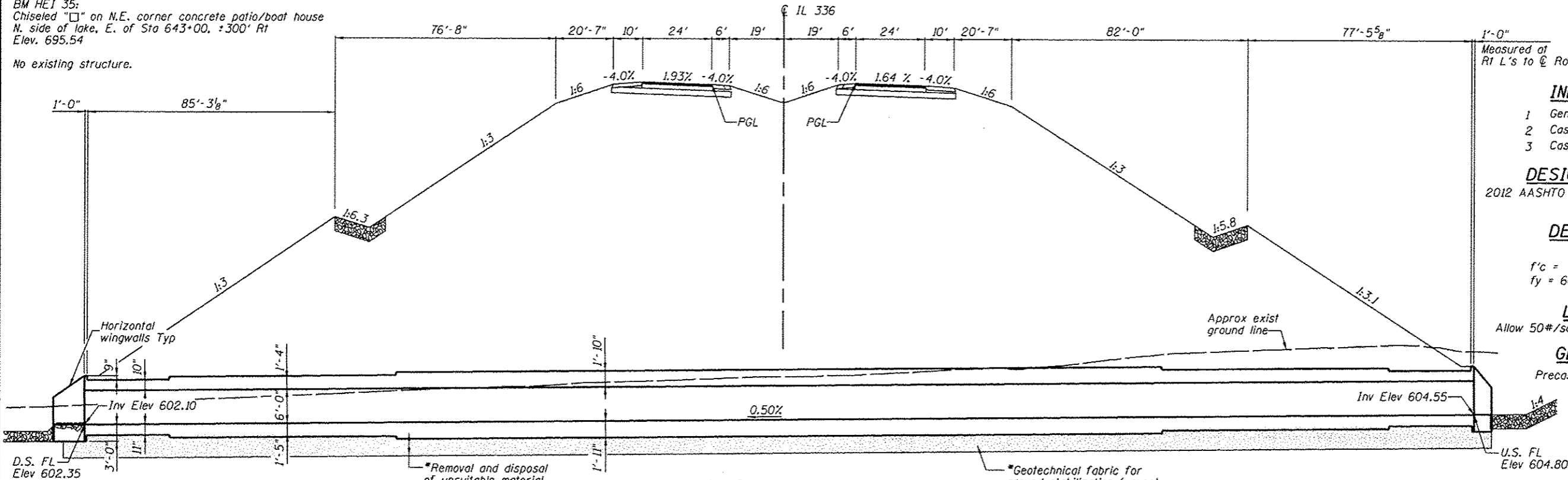
$f'_c = 3,500$ psi
 $f_y = 60,000$ psi (Reinforcement)

LOADING HL-93

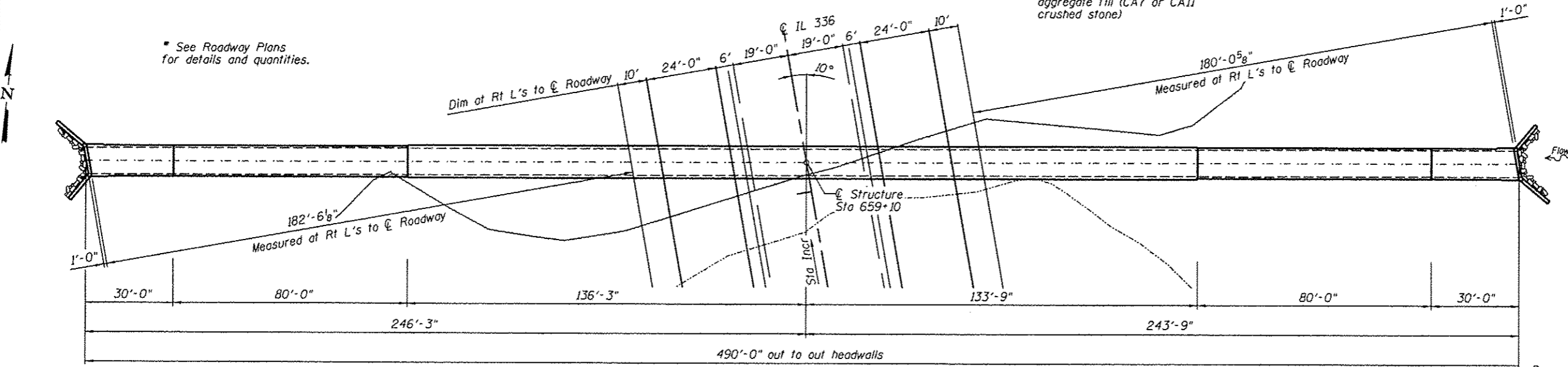
Allow 50#/sq. ft. for future wearing surface.

GENERAL NOTES:

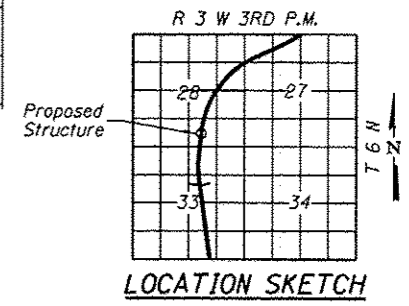
Precast alternate is not allowed.



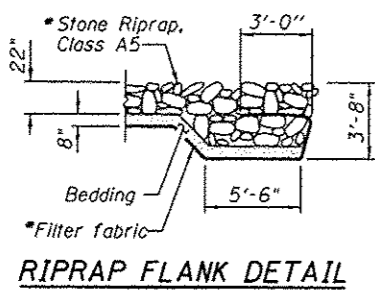
LONGITUDINAL SECTION



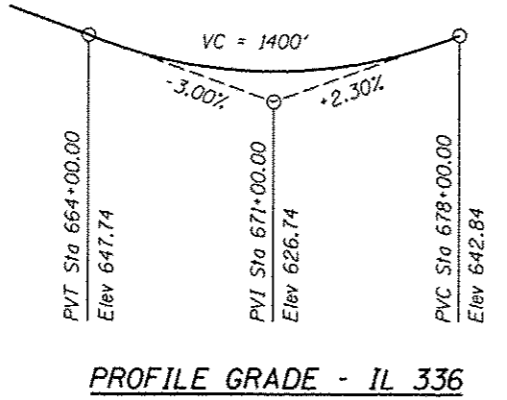
PLAN



LOCATION SKETCH



RIPRAP FLANK DETAIL



PROFILE GRADE - IL 336

TOTAL BILL OF MATERIAL

ITEM	UNIT	TOTAL
Reinforcement Bars	Pound	178,210
Concrete Box Culverts	Cu Yd	835.3

DESIGN SCOUR ELEVATION TABLE

Design Scour Elevation (ft.)	Downstream	Upstream
	599.10	601.55



Jeremy Buening, P.E., S.E. Date
License Expires 11/30/14

**GENERAL PLAN AND ELEVATION,
F.A.I. 407 (IL 336)
OVER DRAINAGE DITCH
MCDONOUGH COUNTY
STATION 659+10.00**

FILE NAME: HE1_IL336_C400_Structure.dwg

HOMER L. CHASTAIN & ASSOCIATES, LLP
CONSULTING ENGINEERS
184-001997

USER NAME = jbuening	DESIGNED CMW	REVISED -
PLOT TIME = 8:35:51 AM	CHECKED JMB	REVISED -
PLOT SCALE = 48,0000 1/16"	DRAWN RLK	REVISED -
PLOT DATE = 1/16/2013	CHECKED JMB	REVISED -

**STATE OF ILLINOIS
DEPARTMENT OF TRANSPORTATION**

**GENERAL PLAN AND ELEVATION
BOX CULVERT AT STA 659+10.00**
SHEET NO. 1 OF 3 SHEETS

F.A. RTE.	SECTION	COUNTY	TOTAL SHEET NO.
407	55-3	MCDONOUGH	671/210
			CONTRACT NO. 68418

ILLINOIS FED. AID PROJECT