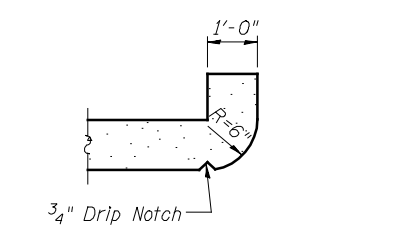


SHOWING REINFORCEMENT
 *a5 bars in skew portion of the slab shall be ordered full length and cut to fit in field.

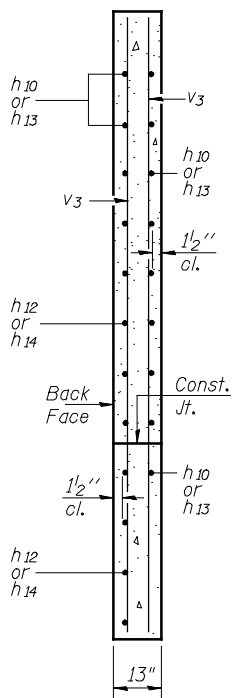
PLAN

SHOWING OUTLINES

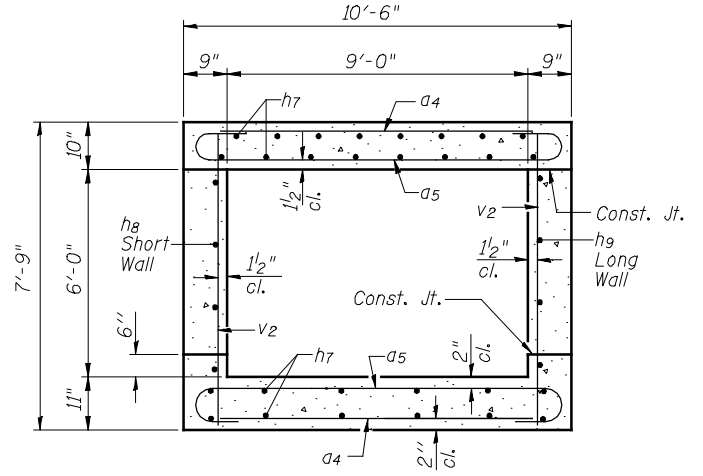
MIN BAR LAP
 #6 bar = 3'-0"
 #7 bar = 3'-11"
 #8 bar = 5'-2"
 #9 bar = 6'-7"



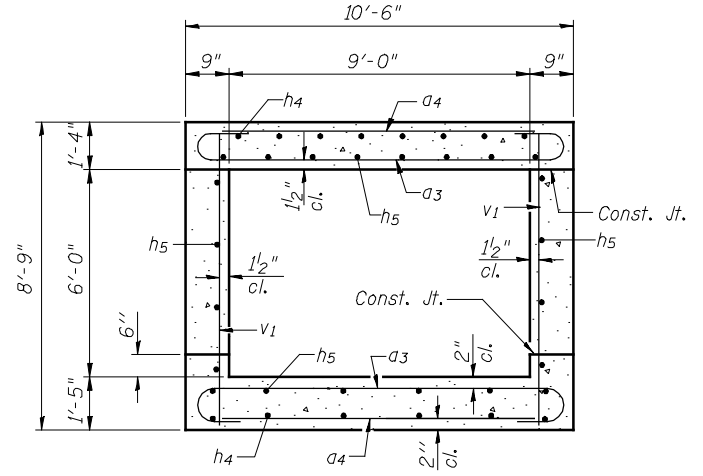
SECTION THRU HEADWALL
 (Up Stream End Only)



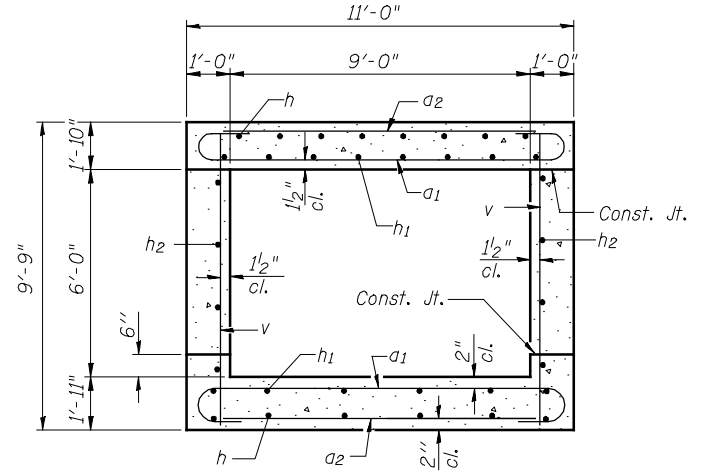
SECTION A-A



SECTION THRU 30' END SECTIONS



SECTION THRU 80' SECTIONS



SECTION THRU 270' MID SECTION

FILE NAME = v:\temp\casam\2891\grading_plans\Chaastain Final\659+10.dgn

SSB-H-L

7-1-10

HOMER L. CHASTAIN & ASSOCIATES, LLP
 CONSULTING ENGINEERS
 184-001897

USER NAME = jdean
 PLOT TIME = *TIME*
 PLOT SCALE = 2=0" = 1'-0"
 PLOT DATE = 12/12/2012

DESIGNED CMW
 CHECKED JMB
 DRAWN RLK
 CHECKED JMB

REVISED -
 REVISED -
 REVISED -
 REVISED -

STATE OF ILLINOIS
DEPARTMENT OF TRANSPORTATION

CAST IN PLACE CULVERT DETAILS
STATION 659+10

SHEET NO. 2 OF 3 SHEETS

F.A.P. RTE.	SECTION	COUNTY	TOTAL SHEETS	SHEET NO.
407	(55-3)A	MCDONOUGH	671	266
			CONTRACT NO. 68A42	
ILLINOIS FED. AID PROJECT				