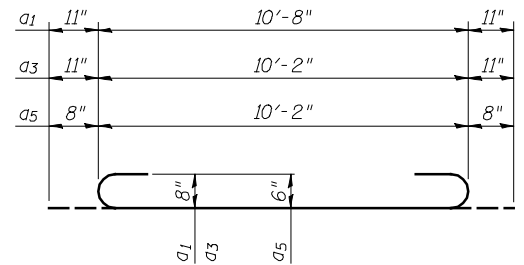


HALF LONG SECTION

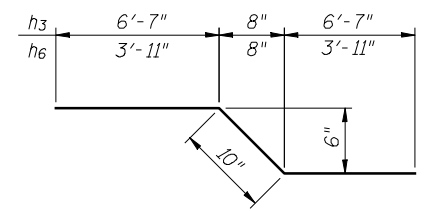
HALF ELEVATION

BILL OF MATERIAL

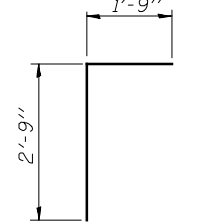
Bar	No.	Size	Length	Shape
a1	1082	#8	12'-6"	U
a2	272	#4	10'-8"	—
a3	644	#8	12'-0"	U
a4	222	#4	10'-2"	—
a5	240	#6	11'-6"	U
d	20	#4	4'-6"	L
h	160	#9	39'-7"	—
h1	160	#9	41'-2"	—
h2	112	#8	39'-7"	—
h3	20	#9	14'-0"	—
h4	120	#7	29'-4"	—
h5	204	#7	30'-7"	—
h6	40	#7	8'-8"	—
h7	80	#6	59'-3"	—
h8	14	#5	28'-9"	—
h9	14	#5	30'-6"	—
h10	26	#7	8'-0"	—
h11	12	#6	10'-4"	—
h12	20	#7	14'-0"	—
h13	26	#7	8'-0"	—
h14	20	#7	12'-6"	—
v	812	#8	9'-5"	—
v1	242	#7	8'-5"	—
v2	184	#5	7'-5"	—
v3	16	#4	10'-3"	—
Concrete Box Culverts	Cu. Yd.		835.3	
Reinforcement Bars	Pound		178,210	



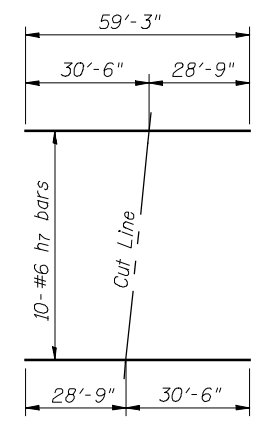
BARS a1, a3 & a5



BARS h3 & h6

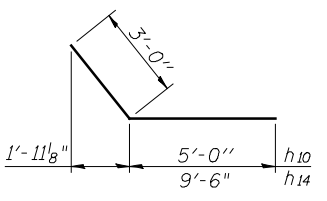


BAR d

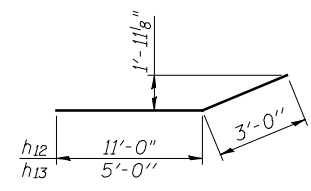


FIELD CUTTING DIAGRAM

Order h7 full length. Cut as shown and use remainder of bars in opposite face.



BARS h10 & h14



BARS h12 & h13

NOTES

A distance of half the length of the wingwall but not less than six feet of the barrel shall be poured monolithically with the wingwalls. Reinforcement bars shall conform to the requirements of ASTM A706 Grade 60. Bars indicated thus 12 x 4-#5 etc. indicates 12 lines of bars with 4 lengths per line.

FILE NAME = v:\tempor-tasoon\2891\grading_plans\Chastain Final\vol.659+10.dgn



USER NAME = jdeen	DESIGNED CMW	REVISED -
PLOT TIME = *TIME*	CHECKED JMB	REVISED -
PLOT SCALE = 20' = 1" IN.	DRAWN RLK	REVISED -
PLOT DATE = 12/12/2012	CHECKED JMB	REVISED -

STATE OF ILLINOIS DEPARTMENT OF TRANSPORTATION

CAST IN PLACE CULVERT DETAILS STATION 659+10

SHEET NO. 3 OF 3 SHEETS

F.A.P. RTE. 407	SECTION (55-3)A	COUNTY MCDONOUGH	TOTAL SHEETS 671	SHEET NO. 267
CONTRACT NO. 68A42			ILLINOIS FED. AID PROJECT	