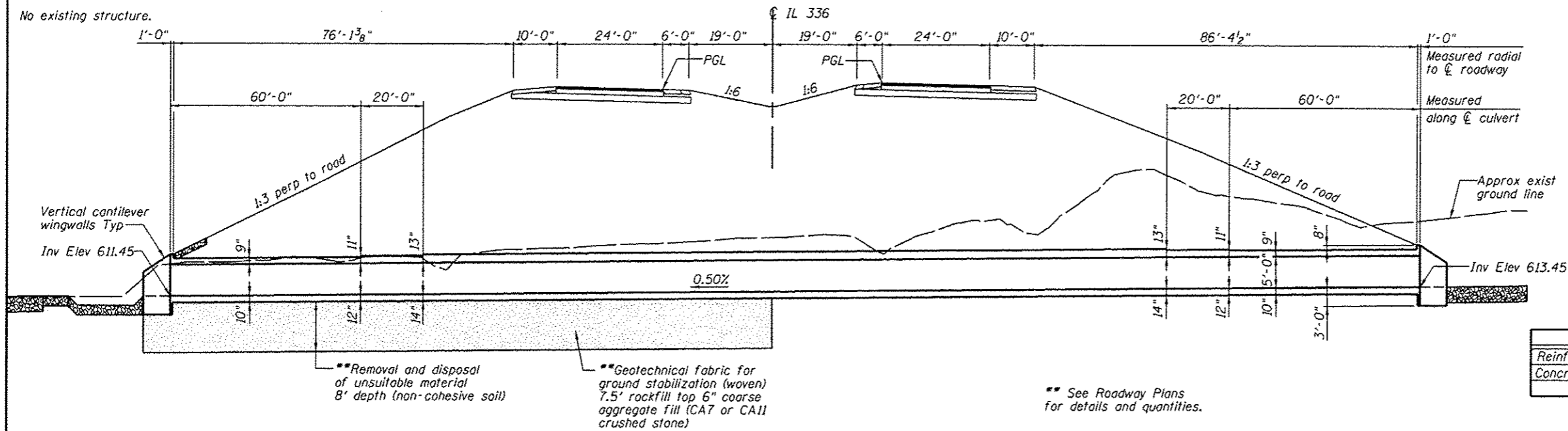
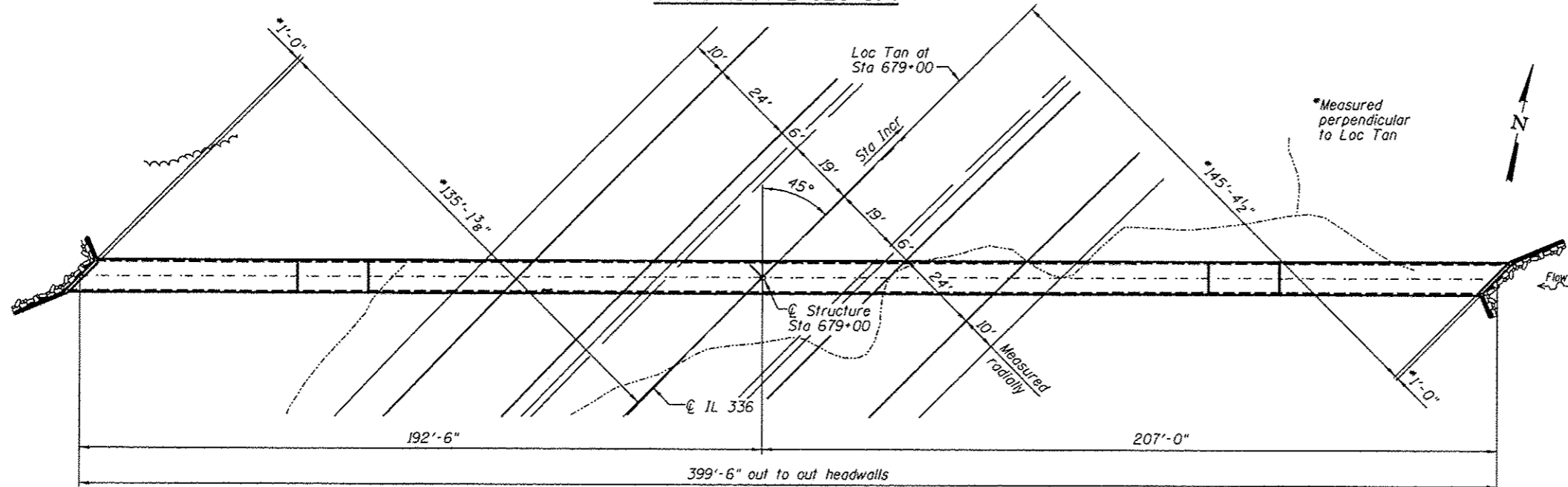


BM W-15
60d nail in E. face of P.P., S.W. quad of 1350N & 900E Roads. ±348' Lt 900E. Elev. 700.20

No existing structure.

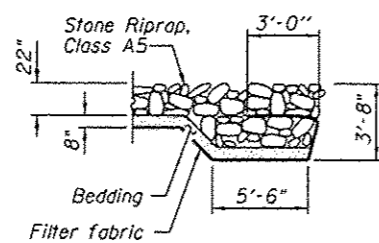


LONGITUDINAL SECTION

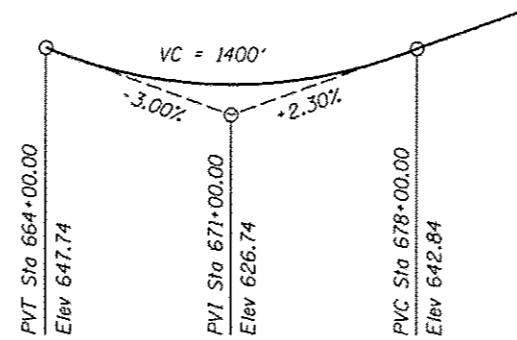


PLAN

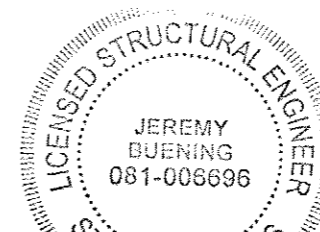
PROP. CURVE IL336-4
PI STA. = 685+49.24
Δ = 60° 09' 14" (RT)
D = 1° 16' 24"
R = 4,500.00'
T = 2,606.15'
L = 4,724.48'
E = 700.19'
S.E. RUN = -----
P.C. STA. = 659+43.10
P.T. STA. = 706+67.58



RIPRAP FLANK DETAIL



PROFILE GRADE - IL 336



Jeremy Buening, P.E., S.E. 12/3/12
License Expires 11/30/14

INDEX OF SHEETS

- 1 General Plan and Elevation
- 2 Cast In Place Culvert Plan
- 3 Cast In Place Culvert Details

DESIGN SCOUR ELEVATION TABLE

| Design Scour Elevation (ft.) | Downstream | Upstream |
|------------------------------|------------|----------|
| | 608.45 | 610.45 |

TOTAL BILL OF MATERIAL

| ITEM | UNIT | TOTAL |
|-----------------------|-------|--------|
| Reinforcement Bars | Pound | 82,740 |
| Concrete Box Culverts | Cu Yd | 378.9 |

DESIGN SPECIFICATIONS

2012 AASHTO LRFD Bridge Design Specifications
6th Edition

DESIGN STRESSES

FIELD UNITS

f'c = 3,500 psi
fy = 60,000 psi (Reinforcement)

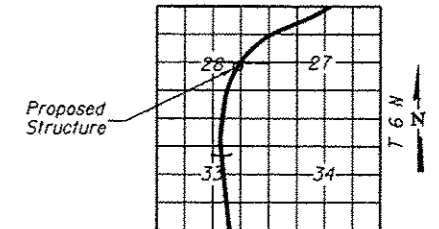
LOADING HL-93

Allow 50#/sq. ft. for future wearing surface.

GENERAL NOTES:

- Precast alternate is not allowed.
- For porous granular embankment details, see Detail of Excavation and Backfill for Box Culverts Sheet.

LOCATION SKETCH



LOCATION SKETCH

GENERAL PLAN AND ELEVATION,

F.A.I. 407 (IL 336)
OVER DRAINAGE DITCH
MCDONOUGH COUNTY
STATION 679+00.00

FILE NAME: F:\00715696 - HEI_IL\336\1900.Structural\Box Culvert\1900.dgn

HOMER L. CHASTAIN & ASSOCIATES, LLP
CONSULTING ENGINEERS
184-981397

| | | |
|------------------------------|--------------|-----------|
| USER NAME = jbuening | DESIGNED ACB | REVISIONS |
| PLOT TIME = 8:36:30 AM | CHECKED JMB | REVISIONS |
| PLOT SCALE = 48.0000' / 1" = | DRAWN RLK | REVISIONS |
| PLOT DATE = 1/15/2013 | CHECKED JMB | REVISIONS |

STATE OF ILLINOIS
DEPARTMENT OF TRANSPORTATION

GENERAL PLAN AND ELEVATION
BOX CULVERT AT STA 679+00.00

SHEET NO. 1 OF 3 SHEETS

| F.A. RTE. | SECTION | COUNTY | TOTAL SHEETS | SHEET NO. |
|-----------|---------|-----------|--------------------|-----------|
| 407 | 55-3 | MCDONOUGH | 671 | 212 |
| | | | CONTRACT NO. 68418 | |

ILLINOIS FED. AID PROJECT