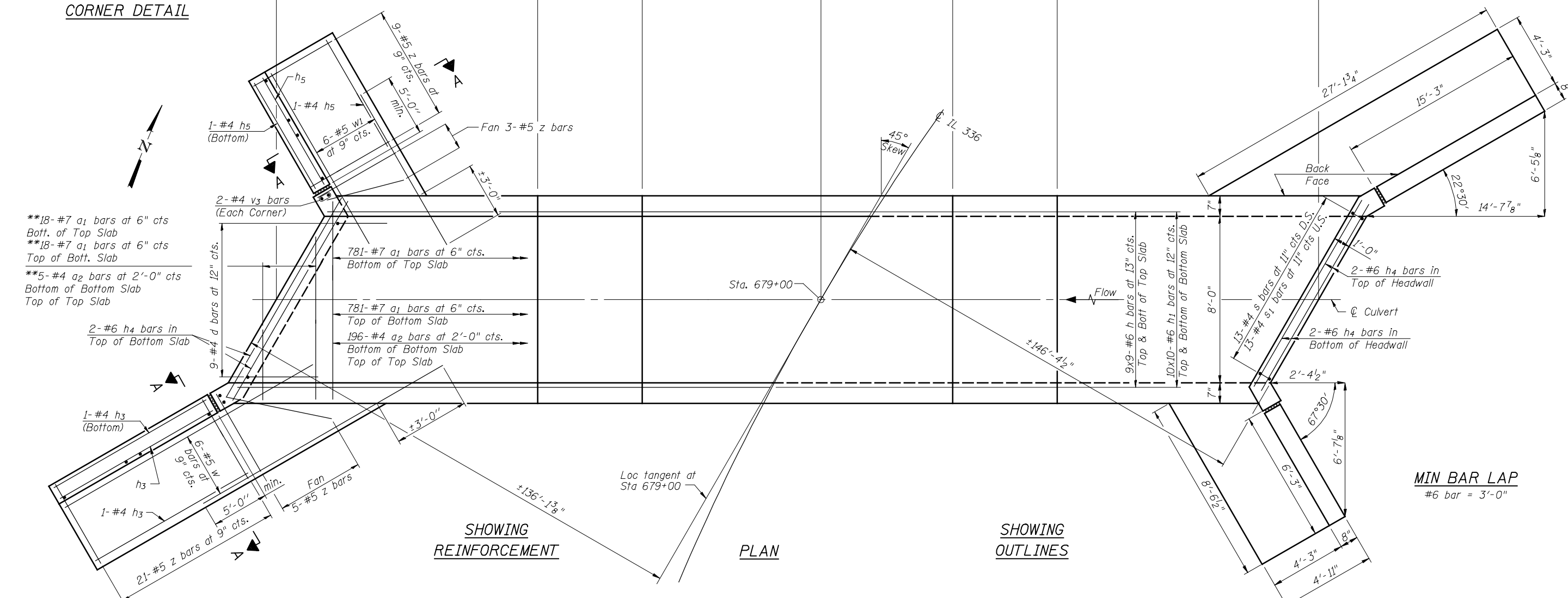


CORNER DETAIL



**18-#7 a₁ bars at 6\" cts
Boff. of Top Slab
**18-#7 a₁ bars at 6\" cts
Top of Bott. Slab
**5-#4 a₂ bars at 2'-0\" cts
Bottom of Bottom Slab
Top of Top Slab

2-#6 h₄ bars in
Top of Bottom Slab

1-#4 h₃
(Bottom)

1-#4 h₃
(Bottom)

**a bars in skew portion of slab shall
be ordered full length & cut to fit.
Balance of bar to be used in opposite
end of culvert.

Loc tangent at
Sta 679+00

**SHOWING
REINFORCEMENT**

PLAN

**SHOWING
OUTLINES**

MIN BAR LAP
#6 bar = 3'-0"

NOTES
Bars indicated thus 12 x 4-#5 etc. indicates
12 lines of bars with 4 lengths per line.

FILE NAME = v:\temp\ssb-l-r\grading_plans\Chastain Final\culv679+00.dgn

SSB-L-R

7-1-10

HOMER L. CHASTAIN & ASSOCIATES, LLP
CONSULTING ENGINEERS
184-001897

USER NAME = jdean	DESIGNED ACB	REVISED -
PLOT TIME = 4:11:58	CHECKED JMB	REVISED -
PLOT SCALE = 2.0000' / IN.	DRAWN RLK	REVISED -
PLOT DATE = 12/12/2012	CHECKED JMB	REVISED -

**STATE OF ILLINOIS
DEPARTMENT OF TRANSPORTATION**

**CAST IN PLACE CULVERT PLAN
STATION 679+00**

SHEET NO. 2 OF 3 SHEETS

F.A.P. RTE. 407	SECTION (55-3)A	COUNTY MCDONOUGH	TOTAL SHEETS 671	SHEET NO. 269
			CONTRACT NO. 68A42	
ILLINOIS FED. AID PROJECT				