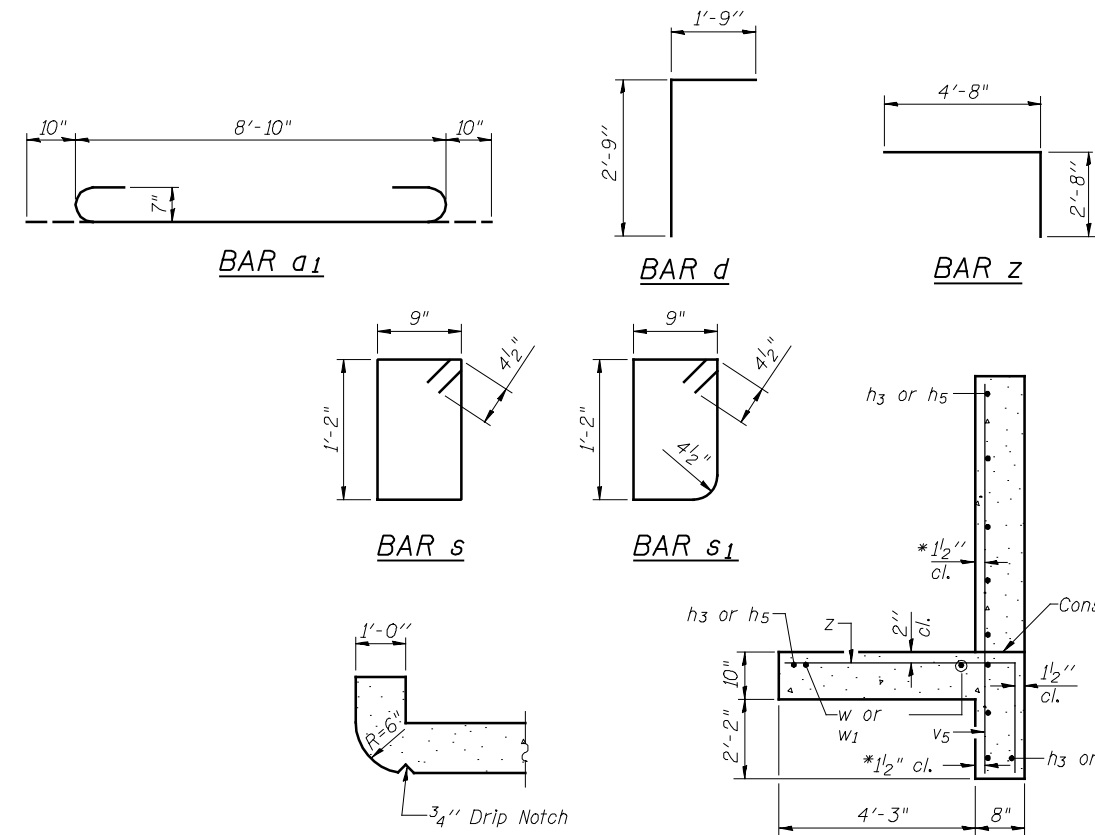


Dimensions at Rt. L's to \odot Roadway

*** v_4 bars in wingwall shall be ordered full length & cut to fit. Balance of bar to be used in opposite end of culvert.



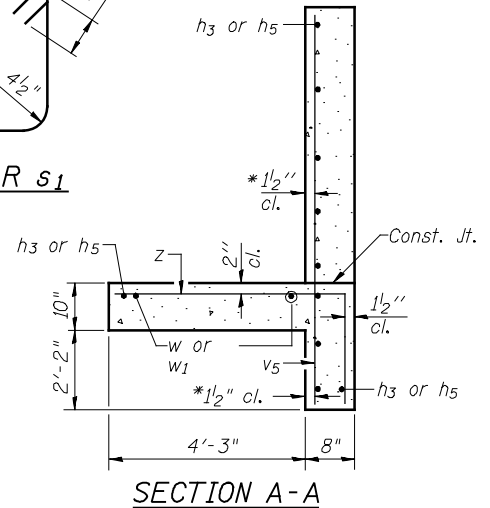
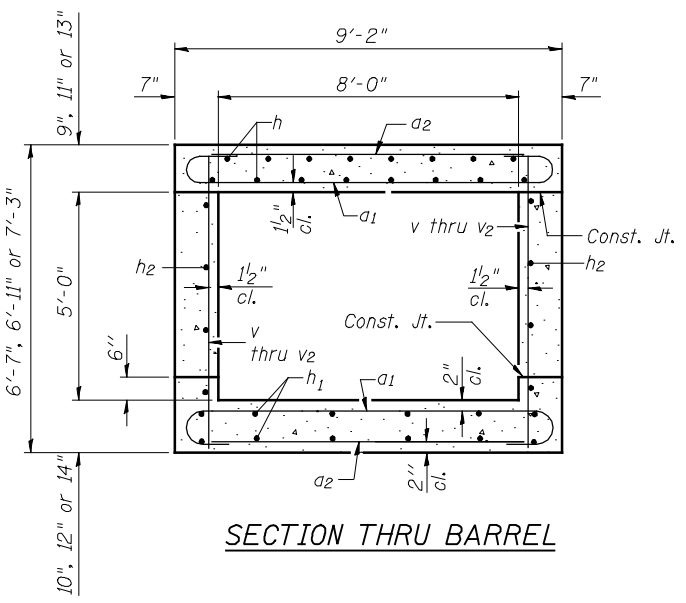
MIN BAR LAP
#6 bar = 3'-0"

DESIGN STRESSES

FIELD UNITS
 $f'_c = 3,500$ psi
 $f_y = 60,000$ psi (Reinforcement)
 Max. Soil Pressure under footing = 2626 psf
LOADING HL-93
 Allow 50#/sq. ft. for future wearing surface

BILL OF MATERIAL

Bar	No.	Size	Length	Shape
a_1	1598	#7	10'-6"	
a_2	404	#4	8'-10"	
d	18	#4	4'-6"	
h	162	#6	47'-1"	
h_1	200	#6	42'-8"	
h_2	132	#6	39'-1"	
h_3	22	#4	15'-0"	
h_4	12	#6	12'-8"	
h_5	22	#4	6'-0"	
s	13	#4	4'-7"	
s_1	13	#4	4'-5"	
v	356	#6	6'-3"	
v_1	124	#6	6'-7"	
v_2	720	#6	6'-11"	
v_3	8	#4	9'-2"	
v_4	23	#4	9'-6"	
v_5	46	#4	5'-7"	
w	12	#5	19'-9"	
w_1	12	#5	10'-3"	
z	76	#5	7'-4"	
Concrete Box Culverts			Cu. Yd.	378.9
Reinforcement Bars			Pound	82,740



* v_5 bars shall not be placed more than 1 1/2" cl. from back face of wingwall.

FILE NAME = v:\tempor-tasoon\2891\grading_plans\Chastain Final\culv679+00.dgn

HOMER L. CHASTAIN & ASSOCIATES, LLP
CONSULTING ENGINEERS
184-001897

USER NAME = jdean
 PLOT TIME = *TIME*
 PLOT SCALE = 2.0000 "/ IN.
 PLOT DATE = 12/12/2012

DESIGNED ACB
 CHECKED JMB
 DRAWN RLK
 CHECKED JMB

REVISED -
 REVISED -
 REVISED -
 REVISED -

STATE OF ILLINOIS
DEPARTMENT OF TRANSPORTATION

CAST IN PLACE CULVERT DETAILS
STATION 679+00

SHEET NO. 3 OF 3 SHEETS

F.AP. RTE.	SECTION	COUNTY	TOTAL SHEETS	SHEET NO.
407	(55-3)A	MCDONOUGH	671	270
			CONTRACT NO. 68A42	
ILLINOIS FED. AID PROJECT				