

Existing Structure: none

INDEX OF SHEETS

1. General Plan and Elevation
2. Concrete Drop Box Details

DESIGN SPECIFICATIONS
2012 AASHTO LRFD Bridge Design Specifications, 6th Edition

CURVE DATA

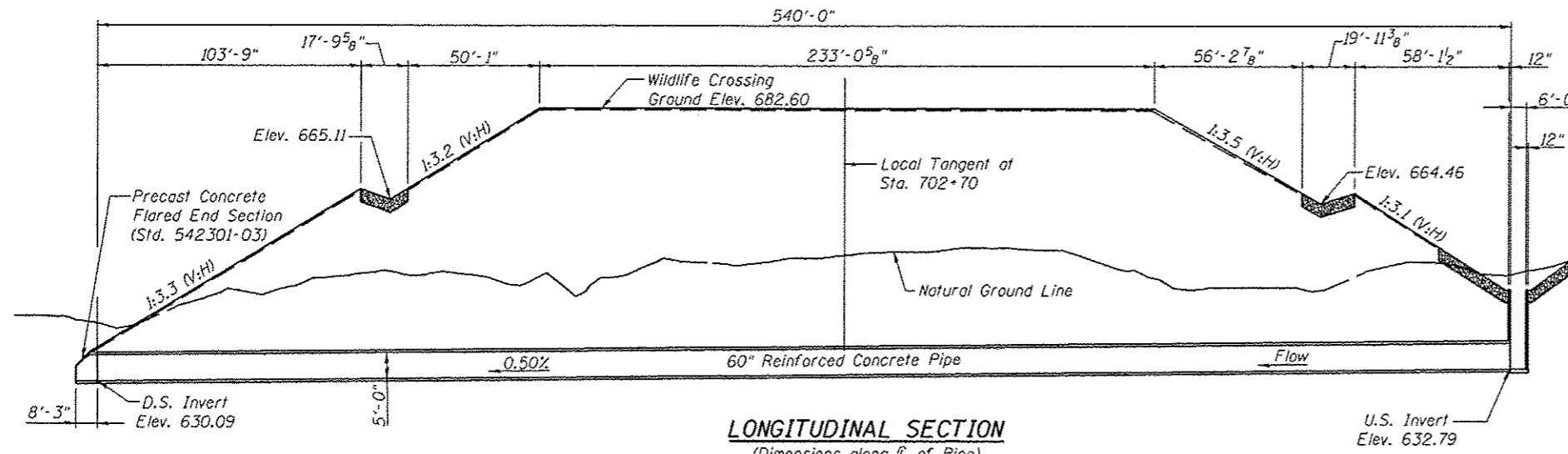
P.I. Sta. = 685+49.24
 $\Delta = 60^{\circ}-09'-14"$ Rt.
 $D = 1^{\circ}-16'-24"$
 $R = 4500'$
 $T = 2606.15$
 $L = 4724.48'$
 $E = 700.19'$
 $e = 4.1'$
 $T.R. = 41.42'$
 $S.E. Run = 4.1'$
 $P.C. Sta. = 659+43.10$
 $P.T. Sta. = 706+67.58$

TOTAL BILL OF MATERIAL

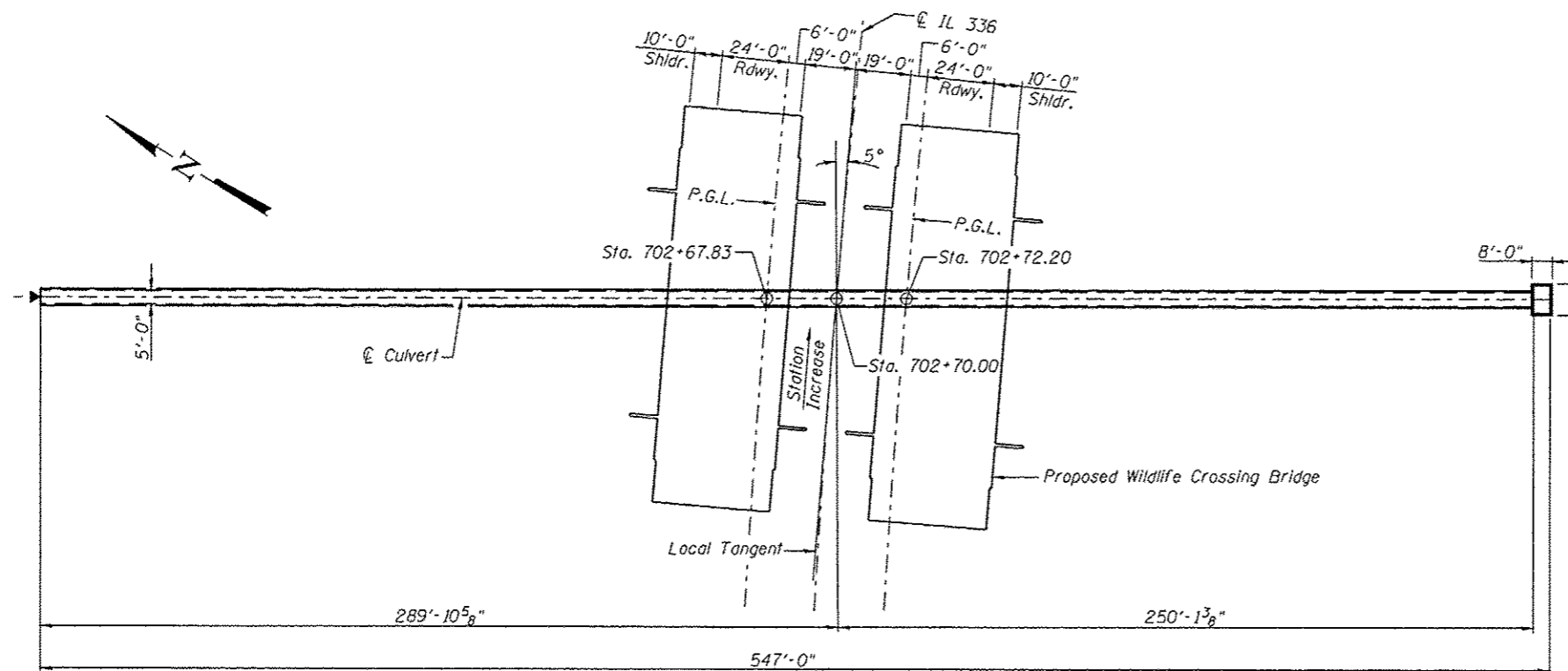
Item	Unit	Total
Pipe Handrail	Foot	36
Pipe Culverts, Special 60"	Foot	540
Precast Reinforced Concrete Flared End Sections, 60"	Each	1
Drop Box No. 1	Each	1

DESIGN STRESSES

FIELD UNITS
 $f'_c = 3,500$ psi
 $f'_c = 4,500$ psi (Precast)
 $f_y = 60,000$ psi (Reinforcement)
 $f_y = 65,000$ psi (Welded Wire Fabric)



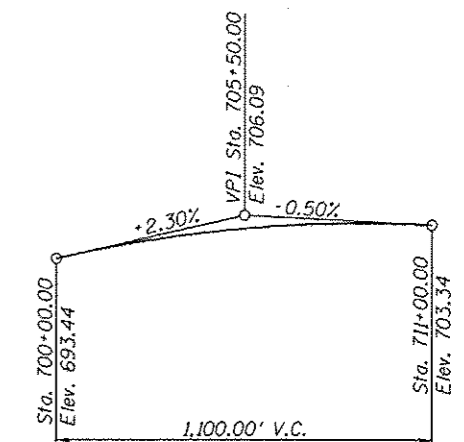
LONGITUDINAL SECTION
(Dimensions along \hat{C} of Pipe)
(Looking East)



PLAN

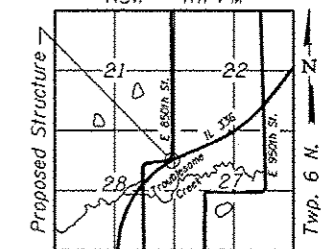
GENERAL NOTES

1. Concrete Pipe Culvert shall conform to the requirements of Section 542 of the Standard Specifications and the applicable requirements of AASHTO M259.
2. See Roadway plans for layout of riprap and riprap quantities.
3. Pipe Culvert shall be constructed before placing embankment for roadway.



PROFILE GRADE

(Along \hat{C} of Roadway)
R3W - 4th PM



LOCATION SKETCH

GENERAL PLAN & ELEVATION

ILLINOIS ROUTE 336
OVER WILDLIFE CROSSING
F.A.P. 407-SEC. (55-3)A
MCDONOUGH COUNTY
STA. 702+70.00



Michael T. Haley, 12-5-12
 Michael T. Haley Date
 Licensed Structural Engineer
 State of Illinois No. 81-5991
 Expires 11/30/2014



USER NAME *	DESIGNED - PSS	REVISED -
FILE NAME *	CHECKED - TBP	REVISED -
PLOT SCALE *	DRAWN - AJF	REVISED -
PLOT DATE *	CHECKED - TBP	REVISED -

STATE OF ILLINOIS
DEPARTMENT OF TRANSPORTATION

F.A.P. RTE. 407	SECTION 155-31A	COUNTY MCDONOUGH	TOTAL SHEETS 2	SHEET NO. 1
			CONTRACT NO. 68A42	71.271