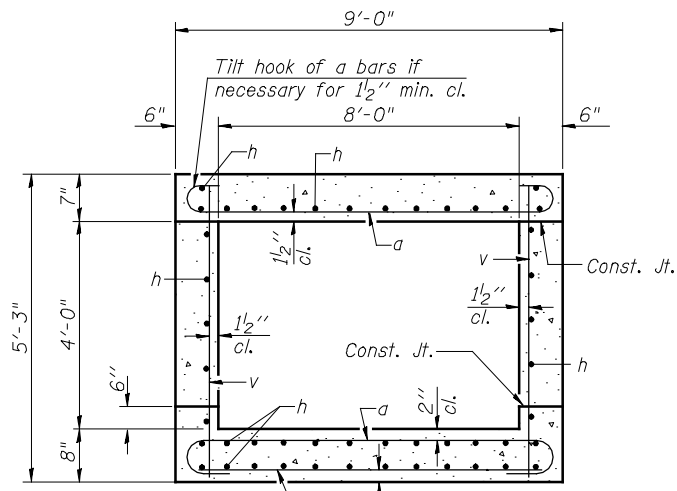
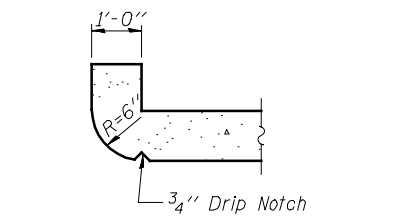


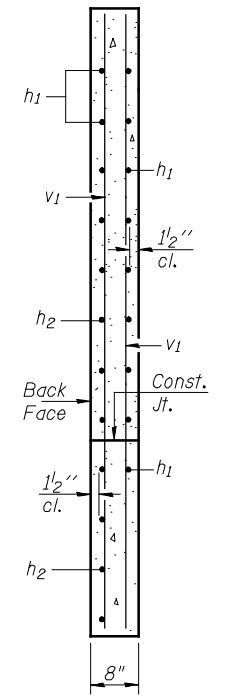
HALF LONG. SECTION **HALF ELEVATION**
 (Dimensions are at right angles to Local Tangent)



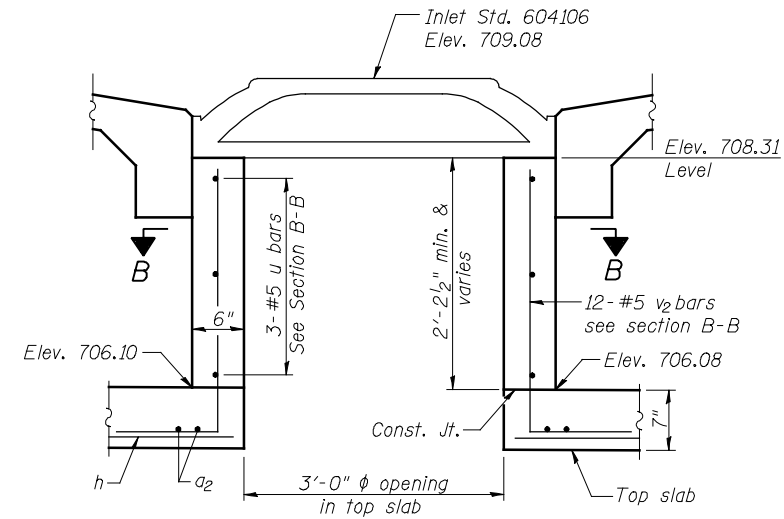
SECTION THRU BARREL



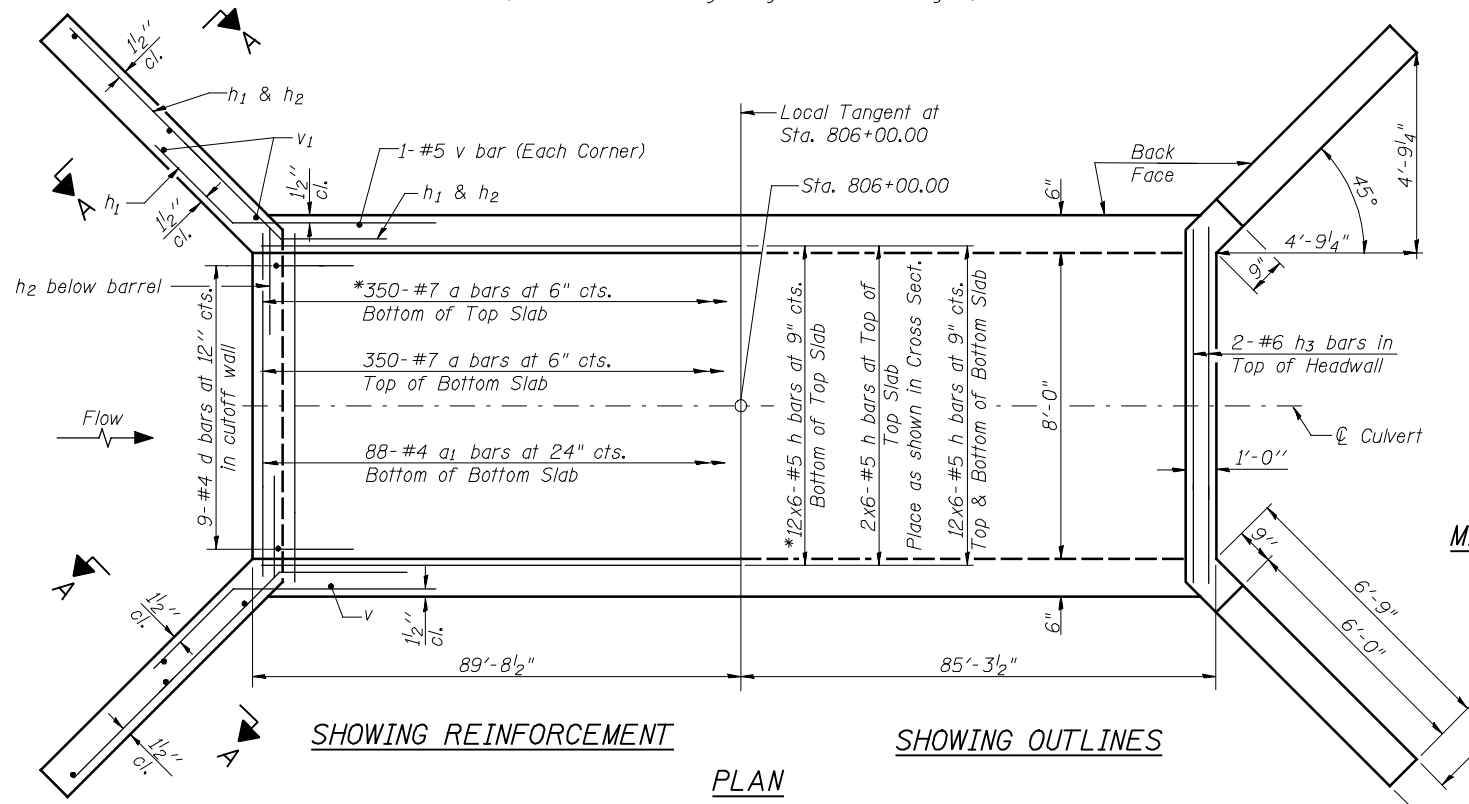
SECTION THRU HEADWALL
 (Up Stream End Only)



SECTION A-A

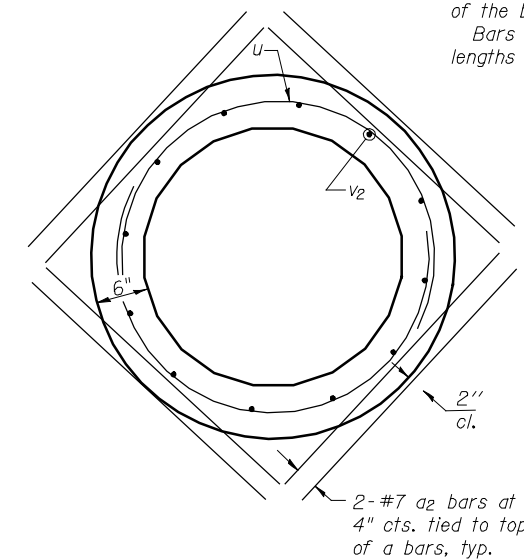
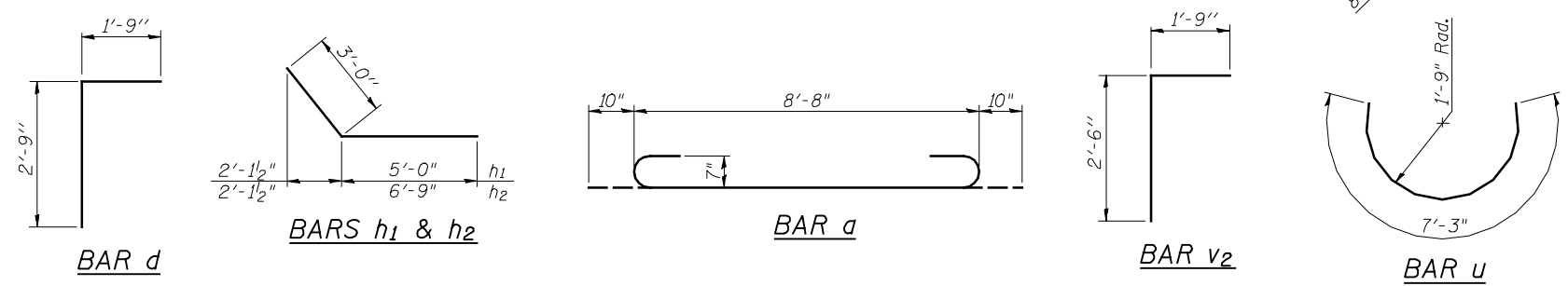


INLET OPENING DETAIL



SHOWING REINFORCEMENT **SHOWING OUTLINES**
PLAN

MIN. BAR LAP
 #5 Bar = 1'-9"



SECTION B-B

NOTES
 A distance of half the length of the wingwall but not less than six feet of the barrel shall be poured monolithically with the wingwalls.
 Bars indicated thus 12 x 6-#5 etc. indicates 12 lines of bars with 6 lengths per line.

BILL OF MATERIAL

Bar	No.	Size	Length	Shape
a	700	#7	10'-4"	U
a1	88	#4	8'-8"	—
a2	8	#7	3'-8"	—
d	18	#4	4'-6"	L
h	288	#5	30'-7"	—
h1	28	#5	8'-0"	—
h2	28	#5	9'-9"	—
h3	4	#6	8'-8"	—
u	6	#5	7'-3"	C
v	356	#5	4'-11"	—
v1	16	#4	7'-11"	—
v2	12	#5	4'-3"	L
Concrete Box Culverts	Cu. Yd.		103.9	
Reinforcement Bars	Pound		27,180	



USER NAME =	DESIGNED - ZTB	REVISED -
FILE NAME =	CHECKED - TBP	REVISED -
PLOT SCALE =	DRAWN - AJF	REVISED -
PLOT DATE =	CHECKED - MTH	REVISED -

STATE OF ILLINOIS
DEPARTMENT OF TRANSPORTATION

CULVERT DETAILS
STA. 806 + 00.00

F.A.P. RTE.	SECTION	COUNTY	TOTAL SHEETS	SHEET NO.
407	(55-3)A	MCDONOUGH	671	274
			CONTRACT NO. 68A42	

SHEET NO. 2 OF 2 SHEETS

ILLINOIS FED. AID PROJECT - D 94-036-11