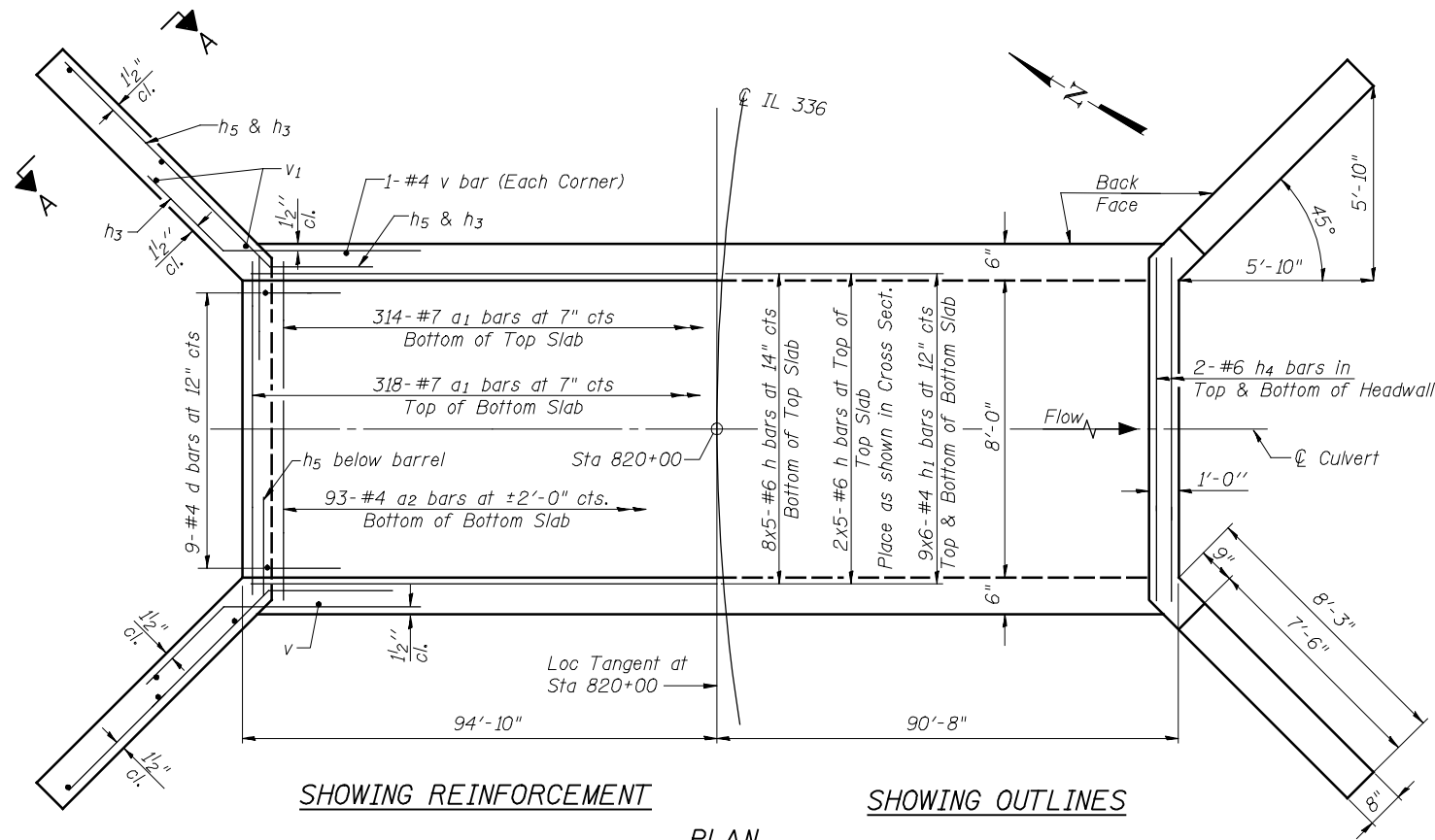


HALF LONG. SECTION

HALF ELEVATION



SHOWING REINFORCEMENT

SHOWING OUTLINES

PLAN

NOTES

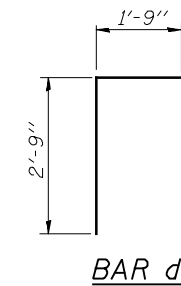
MIN BAR LAP

- #4 bar = 2'-0"
- #5 bar = 2'-6"
- #6 bar = 3'-0"

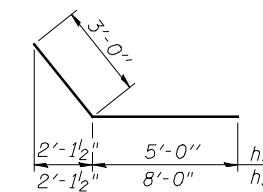
A distance of half the length of the wingwall but not less than six feet of the barrel shall be poured monolithically with the wingwalls.

Bars indicated thus 12 x 4-#5 etc. indicates 12 lines of bars with 4 lengths per line.

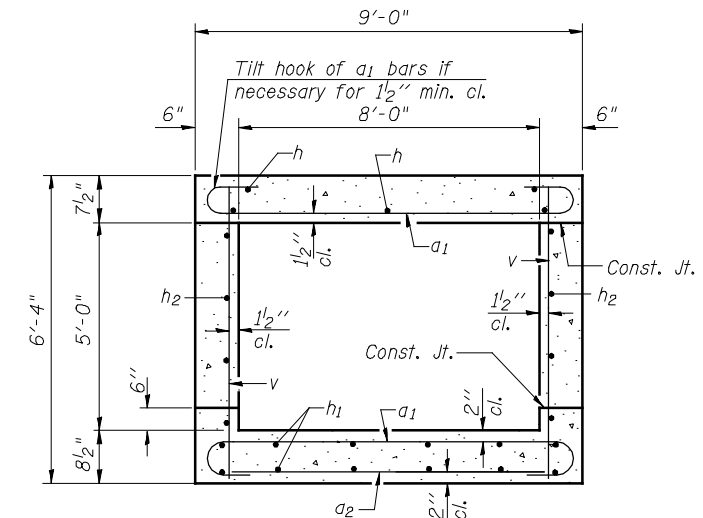
Reinforcement bars shall conform to the requirements of ASTM A706 Grade 60.



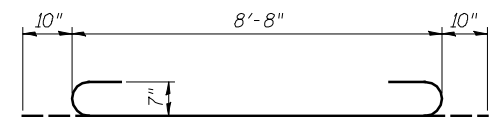
BAR d



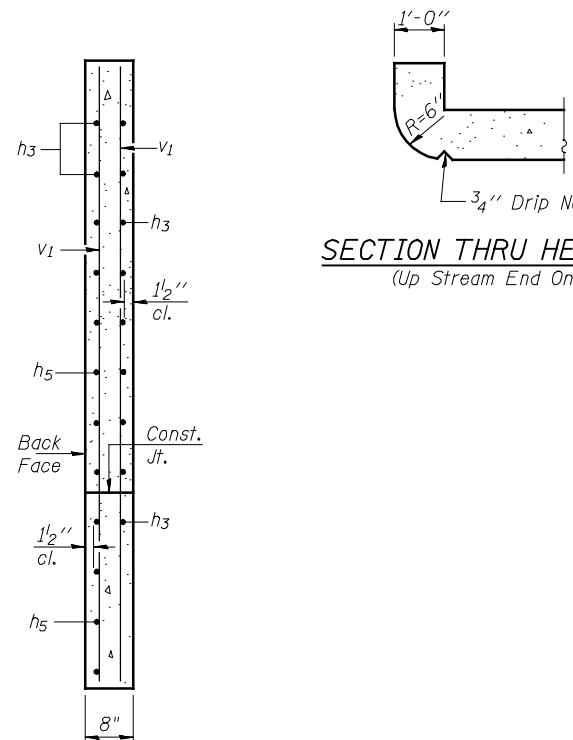
BARS h3 & h5



SECTION THRU BARREL



BAR a1



SECTION THRU HEADWALL (Up Stream End Only)

BILL OF MATERIAL

| Bar | No. | Size | Length | Shape |
|-----------------------|-----|------|---------|--------|
| a1 | 632 | #7 | 10'-4" | U |
| a2 | 95 | #4 | 8'-3" | — |
| d | 18 | #4 | 4'-6" | L |
| h | 50 | #6 | 39'-6" | — |
| h1 | 108 | #4 | 32'-7" | — |
| h2 | 50 | #5 | 39'-1" | — |
| h3 | 36 | #6 | 8'-0" | — |
| h4 | 8 | #6 | 8'-8" | — |
| h5 | 40 | #6 | 11'-0" | — |
| v | 560 | #4 | 6'-0" | — |
| v1 | 16 | #4 | 9'-0" | — |
| Concrete Box Culverts | | | Cu. Yd. | 124.8 |
| Reinforcement Bars | | | Pound | 24,820 |

FILE NAME = v:\temp\ssb-h-0\grading_plans\Chastain Final\culv820+00.dgn

SSB-H-0
HOMER L. CHASTAIN & ASSOCIATES, LLP
 CONSULTING ENGINEERS
 184-001897

| | | |
|------------------------------|--------------|-----------|
| USER NAME = jdean | DESIGNED ACB | REVISED - |
| PLOT TIME = 4:11:58 | CHECKED JMB | REVISED - |
| PLOT SCALE = 2/8" = 1' / IN. | DRAWN RLK | REVISED - |
| PLOT DATE = 12/12/2012 | CHECKED JMB | REVISED - |

STATE OF ILLINOIS
 DEPARTMENT OF TRANSPORTATION

CAST IN PLACE CULVERT DETAILS
 STATION 820+00

SHEET NO. 2 OF 2 SHEETS

| | | | | |
|--------------------|-----------------|------------------|---------------------------|---------------|
| F.A.P. RTE. 407 | SECTION (55-3)A | COUNTY MCDONOUGH | TOTAL SHEETS 671 | SHEET NO. 276 |
| CONTRACT NO. 68A42 | | | ILLINOIS FED. AID PROJECT | |