

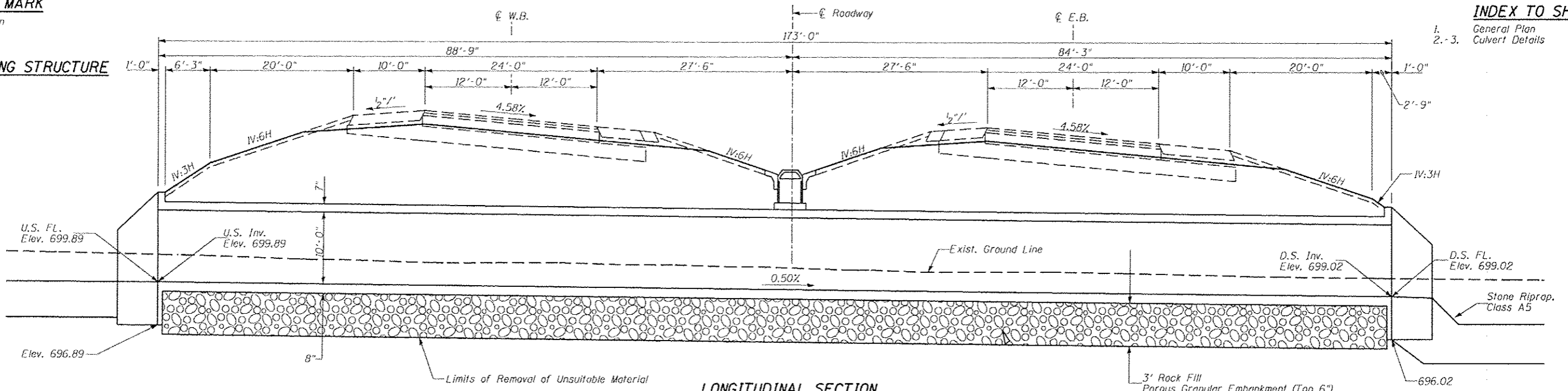
BENCH MARK

Description
Sta.
Elev.

INDEX TO SHEETS

- 1. General Plan
- 2.-3. Culvert Details

EXISTING STRUCTURE

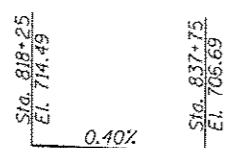
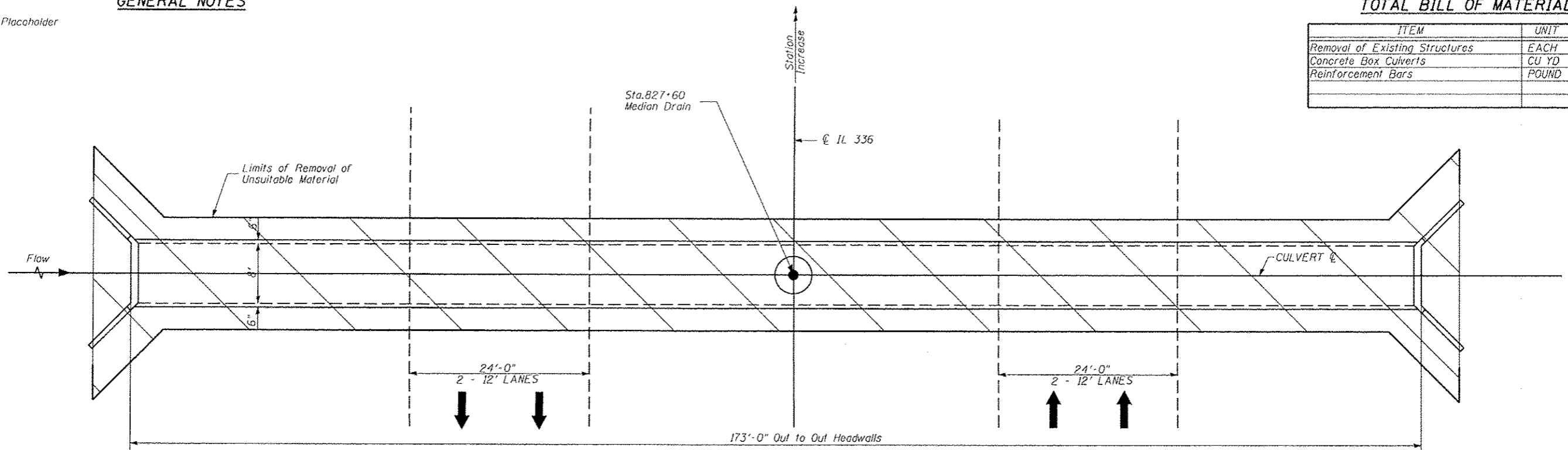


GENERAL NOTES

Placeholder

TOTAL BILL OF MATERIAL

ITEM	UNIT	TOTAL
Removal of Existing Structures	EACH	1
Concrete Box Culverts	CU YD	112
Reinforcement Bars	POUND	24,120



LOADING HL-93

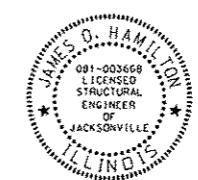
Allow 50#/sq. ft. for future wearing surface.

DESIGN SPECIFICATIONS

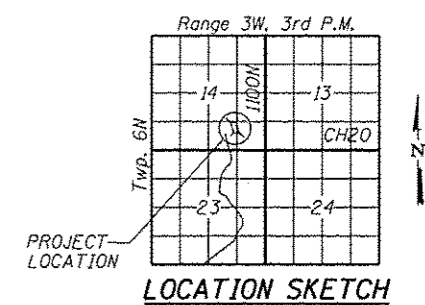
2012 AASHTO LRFD Bridge Design Specifications, 6th Edition

DESIGN STRESSES

FIELD UNITS
 f'c = 3,500 psi
 fy = 60,000 psi (Reinforcement)



James O. Hamilton, date: 12/10/2012
 Expires: 11/30/2014



FILE NAME *	USER NAME = jdoen	DESIGNED -	REVISED -	STATE OF ILLINOIS DEPARTMENT OF TRANSPORTATION	GENERAL PLAN AND ELEVATION STA 827 + 60.00			F.A.P. RTE. 407	SECTION 655-31A	COUNTY MCDONOUGH	TOTAL SHEETS 671	SHEET NO. 277
v:\transportation\2891\grading plans\Hann Final\CULVERT PLAN SHEET 827+60.dgn		DRAWN -	REVISED -		SCALE:	SHEET NO. 1 OF 2 SHEETS	STA.	TO STA.	ILLINOIS FED. AID PROJECT			
		CHECKED - JOH	REVISED -									
		DATE - 12-12-12	REVISED -									