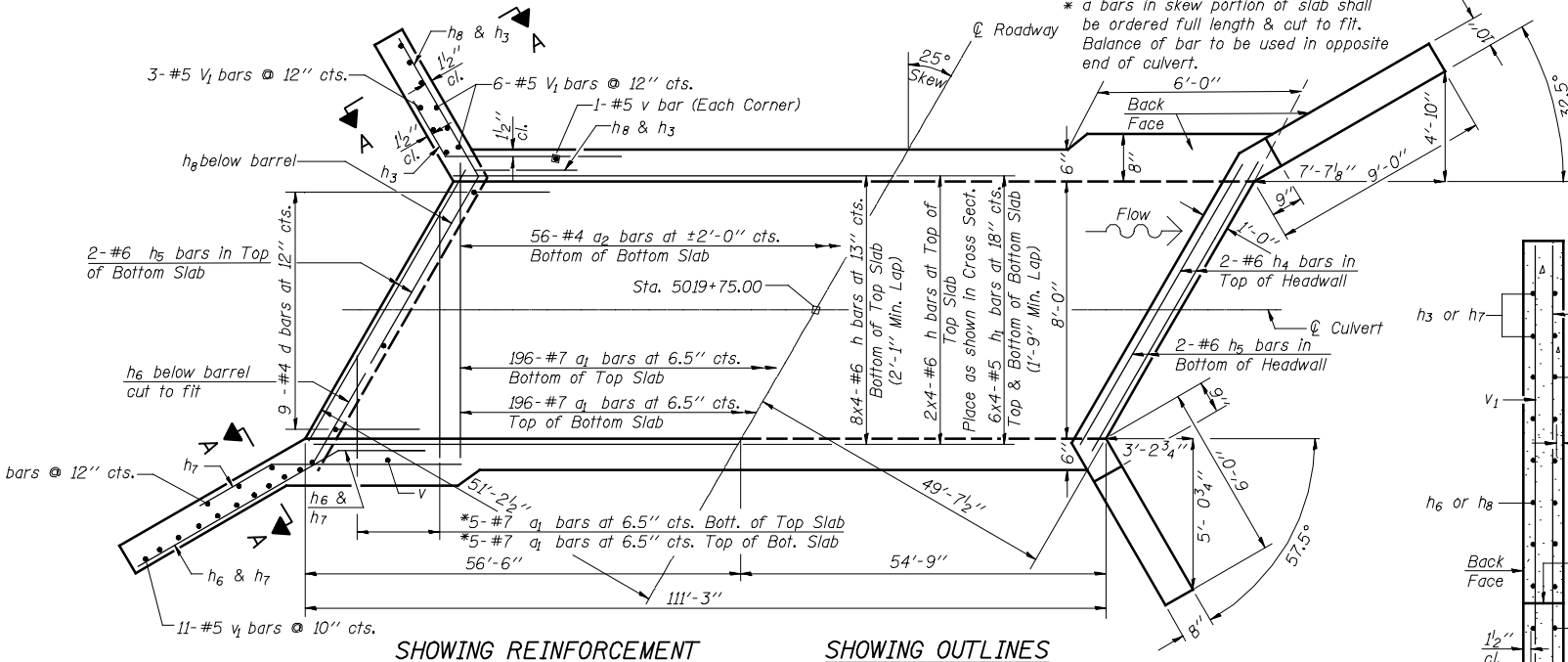


HALF LONG. SECTION HALF ELEVATION

Dimensions at Rt. L's to \odot Roadway

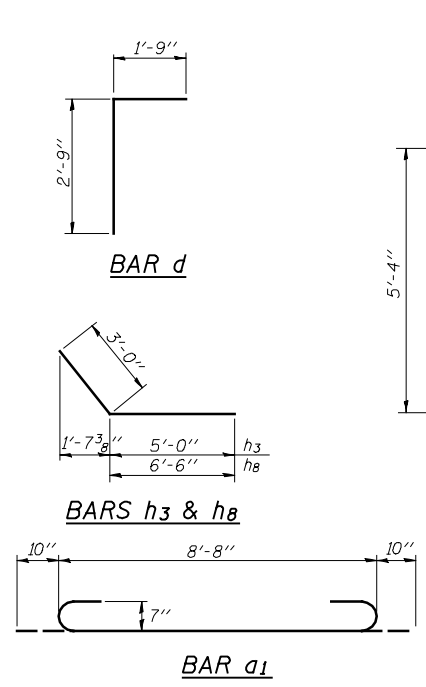


SHOWING REINFORCEMENT SHOWING OUTLINES

PLAN

NOTES

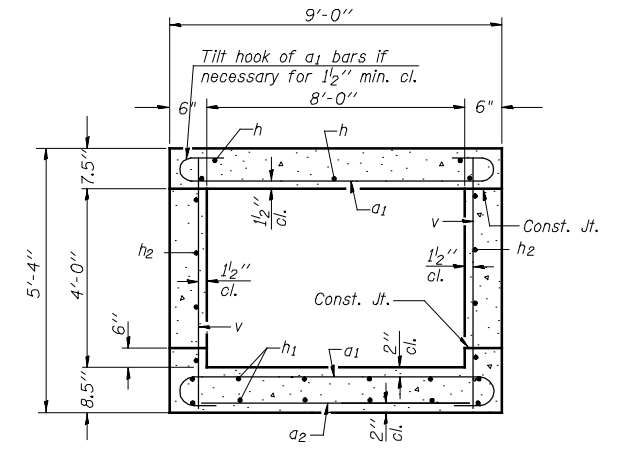
A distance of half the length of the wingwall but not less than six feet of the barrel shall be poured monolithically with the wingwalls.
 Bars indicated thus 12 x 4-#5 etc. Indicates 12 lines of bars with 4 lengths per line.



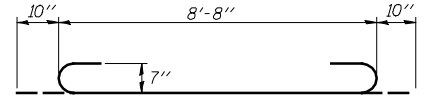
BAR d

BARS h3 & h8

BAR a1



SECTION THRU BARREL



SECTION THRU HEADWALL
(Up Stream End Only)

DESIGN STRESSES

$f_y = 60,000 \text{ psi}$
 $f'_c = 3,500 \text{ psi}$

BILL OF MATERIAL

Bar	No.	Size	Length	Shape
a	402	#7	10'-4"	
a2	58	#4	8'-3"	—
d	18	#4	4'-6"	
h	40	#6	29'-4"	—
h1	48	#5	29'-2"	—
h2	40	#5	29'-2"	—
h3	14	#6	8'-0"	
h4	4	#6	8'-5"	—
h5	4	#6	9'-10"	—
h6	16	#7	12'-6"	—
h7	16	#7	8'-0"	—
h8	14	#6	9'-6"	—
v	272	#5	5'-0"	—
v2	46	#5	7'-11"	—
Concrete Box Culverts		Cu. Yd.	74.1	
Reinforcement Bars		Pound	16,250	
Porous Granular Embankment		Cu. Yd.	350	

SSB-H-R 7-1-10

FILE NAME =	USER NAME = jdeen	DESIGNED -	REVISED -
v:\transportation\2891\grading plans\Hermann Final\Culvert 5019+75.00_DETAIL SHEET.dwg		DRAWN -	REVISED -
PLOT SCALE = 2.000000 FT / IN.		CHECKED - JOH	REVISED -
PLOT DATE = 12/12/2012		DATE - 12-12-12	REVISED -

**STATE OF ILLINOIS
DEPARTMENT OF TRANSPORTATION**

**CULVERT DETAILS
STA 5019+75.00**

SCALE: SHEET NO. 2 OF 2 SHEETS STA. TO STA.

F.A.P. RTE.	SECTION	COUNTY	TOTAL SHEETS	SHEET NO.
407	(55-3)A	MCDONOUGH	671	285
			CONTRACT NO. 68A42	
ILLINOIS FED. AID PROJECT				