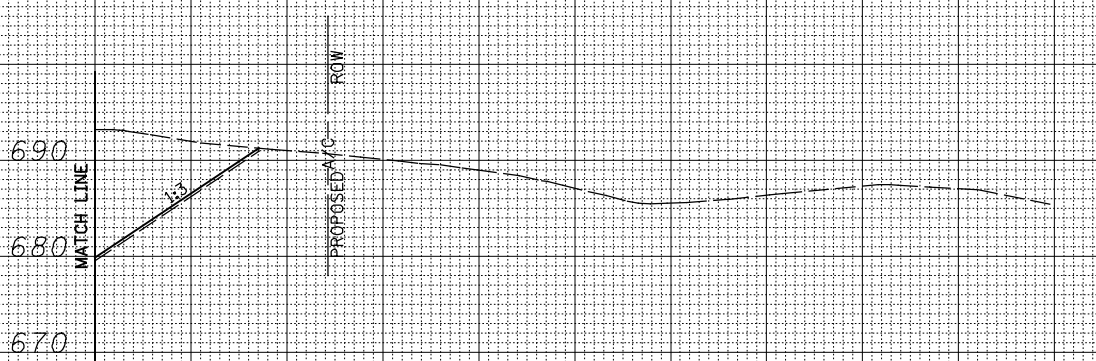


300 320 340 360 380 400 420 440 460 480 500 520 540 560 580 600 620 640 660 680 700 720 740 760 780 800 820 840 860 880 900

BY	DATE
FINAL SURVEY	SURVEYED
NOTE BOOK	PLOTTED
NO.	TEMPLATE
	AREAS CHECKED



**673+00.000  
(RIGHT)**

300 320 340 360 380 400 420 440 460 480 500 520 540 560 580 600 620 640 660 680 700 720 740 760 780 800 820 840 860 880 900

FILE NAME = V:\Transportation\2891\Grading Plans\2891xsheets-20\SCALE.dgn  
 PLOT SCALE = 40.00' / IN.  
 PLOT DATE = 12/12/2012

USER NAME = jdeen	DESIGNED - JRB	REVISED -
	DRAWN - TJD	REVISED -
	CHECKED - AWM	REVISED -
	DATE - 12-12-12	REVISED -

**STATE OF ILLINOIS  
DEPARTMENT OF TRANSPORTATION**

**FAP ROUTE 407 (IL RTE 336)  
CROSS SECTIONS - MATCHLINE RT**  
 SCALE: 1" = 20' H  
 1" = 10' V  
 SHEET NO. 91 OF 176 SHEETS STA. 673+00.000 TO STA. 673+00.000

F.A.P. RTE.	SECTION	COUNTY	TOTAL SHEETS	SHEET NO.
407	(55-3)A	MCDONOUGH	671	421
			CONTRACT NO. 68A42	
ILLINOIS FED. AID PROJECT				

BY	DATE
ORIGINAL SURVEY	SURVEYED
NOTE BOOK	PLOTTED
NO.	TEMPLATE
	AREAS CHECKED