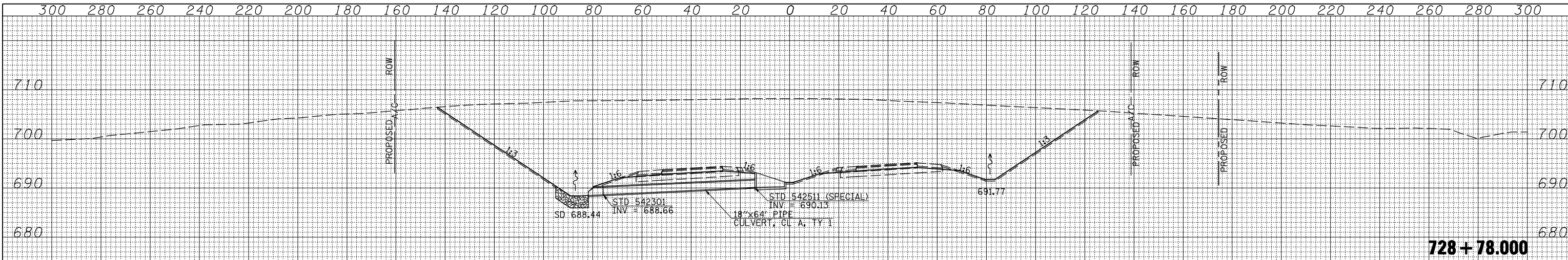
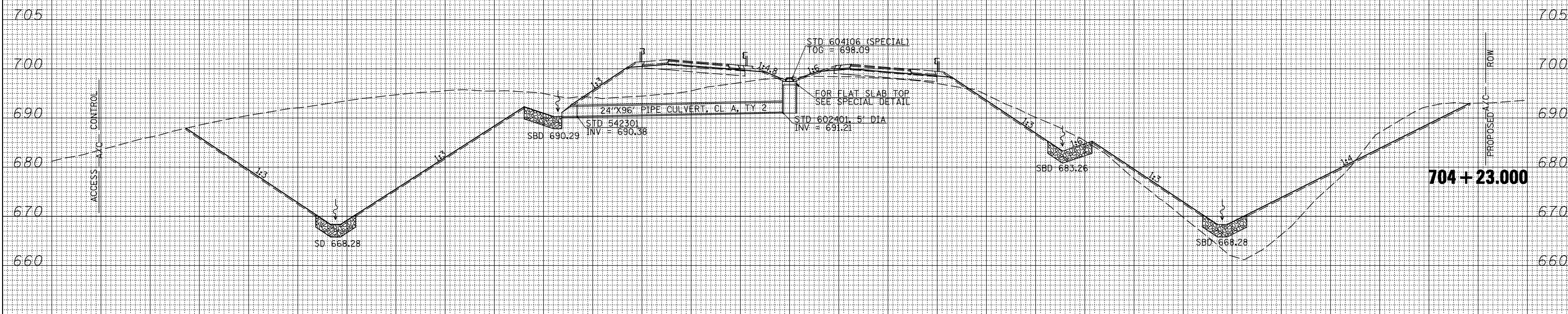


DATE	
BY	
FINAL SURVEY	SURVEYED
NOTE BOOK	PLOTTED
NO.	TEMPLATE
	AREAS CHECKED



DATE	
BY	
ORIGINAL SURVEY	SURVEYED
NOTE BOOK	PLOTTED
NO.	TEMPLATE
	AREAS CHECKED



FILE NAME =	USER NAME = jdeen	DESIGNED - JRB	REVISED -	STATE OF ILLINOIS DEPARTMENT OF TRANSPORTATION	FAP ROUTE 407 (IL RTE 336) CULVERT CROSS SECTIONS	F.A.P. RTE. 407	SECTION (55-3)A	COUNTY MCDONOUGH	TOTAL SHEETS 671	SHEET NO. 523	
V:\Transportation\2891\Grading Plans\2891xsheets-20\SCALE.dgn	DRAWN - TJD	REVISED -	SCALE: 1/4"=20' H 1/4"=10' V			SHEET NO. 17 OF 22 SHEETS	STA. 704+23.000 TO STA. 728+78.000	CONTRACT NO. 68A42	ILLINOIS FED. AID PROJECT		
PLOT SCALE = 40.00' / IN.	CHECKED - AWM	REVISED -									
PLOT DATE = 12/12/2012	DATE - 12-12-12	REVISED -									