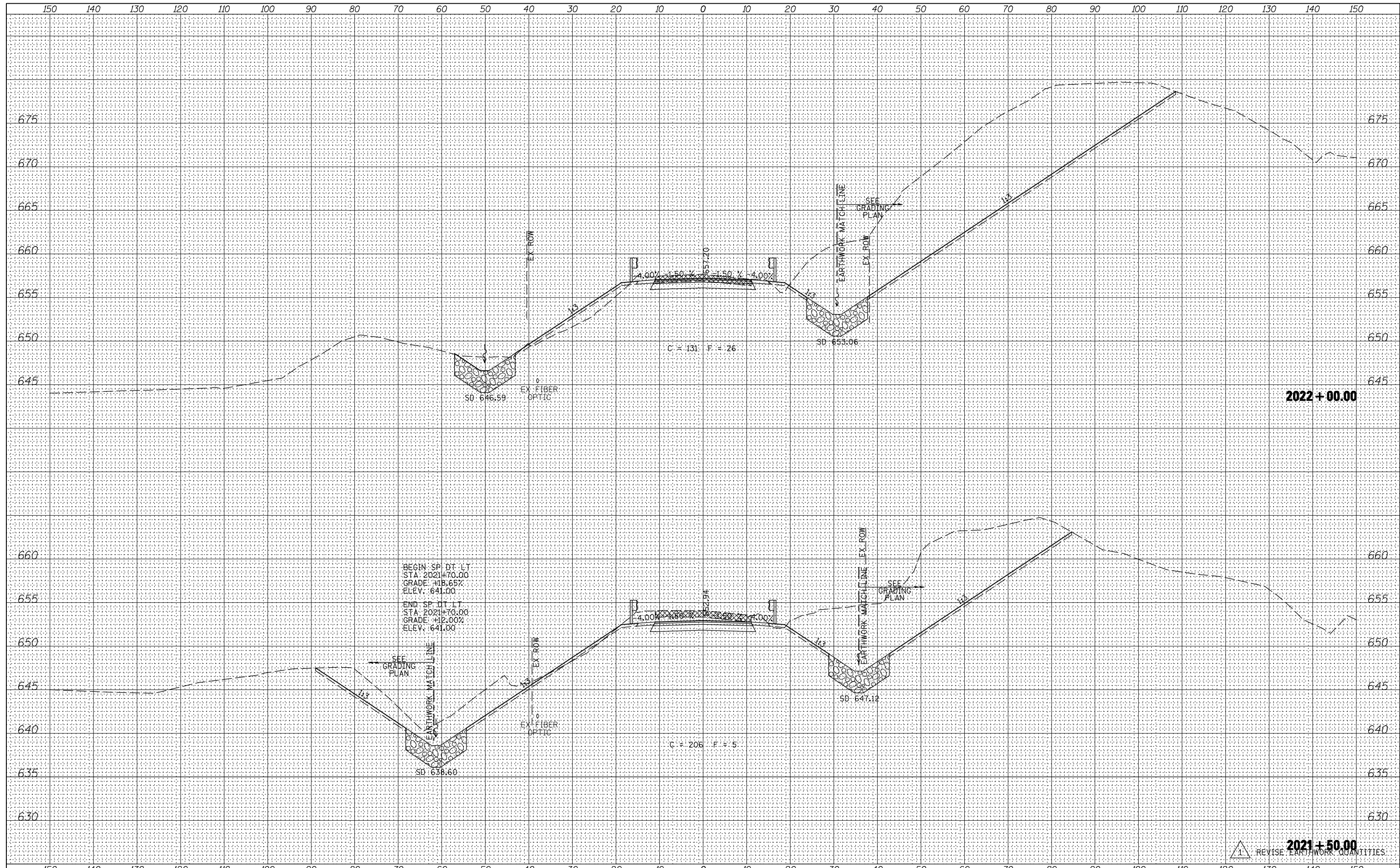


DATE	
BY	
FINAL SURVEY	SURVEYED
NOTE BOOK	PLOTTED
NO.	TEMPLATE
	AREAS CHECKED

DATE	
BY	
ORIGINAL SURVEY	SURVEYED
NOTE BOOK	PLOTTED
NO.	TEMPLATE
	AREAS CHECKED



BEGIN SP DT LT
 STA: 2021+70.00
 GRADE: +18.65%
 ELEV: 641.00
 END SP DT LT
 STA: 2021+70.00
 GRADE: +12.00%
 ELEV: 641.00

FILE NAME =	USER NAME = jdeen	DESIGNED - JRB	REVISED - 02/07/2013	STATE OF ILLINOIS DEPARTMENT OF TRANSPORTATION	FAP 407 (IL RTE 336) CROSS SECTIONS - CH14	F.A.P. RTE.	SECTION	COUNTY	TOTAL SHEETS	SHEET NO.	
vi:\transportation\2891\grading plans\2891XSHEET_CH14.dgn		DRAWN - TJD	REVISED -			407	(55-3)A	McDONOUGH	671	547	
PLOT SCALE = 20.00' / IN.		CHECKED - ANM	REVISED -			CONTRACT NO. 68A42					
XS.SHEET		DATE - 12-12-12	REVISED -			ILLINOIS FED. AID PROJECT					

SCALE: 1" = 10' H
 1" = 5' V
 SHEET 17 OF 19 SHEETS STA. 2021+50.00 TO STA. 2022+00.00

1 REVISION: REVISE EARTHWORK QUANTITIES