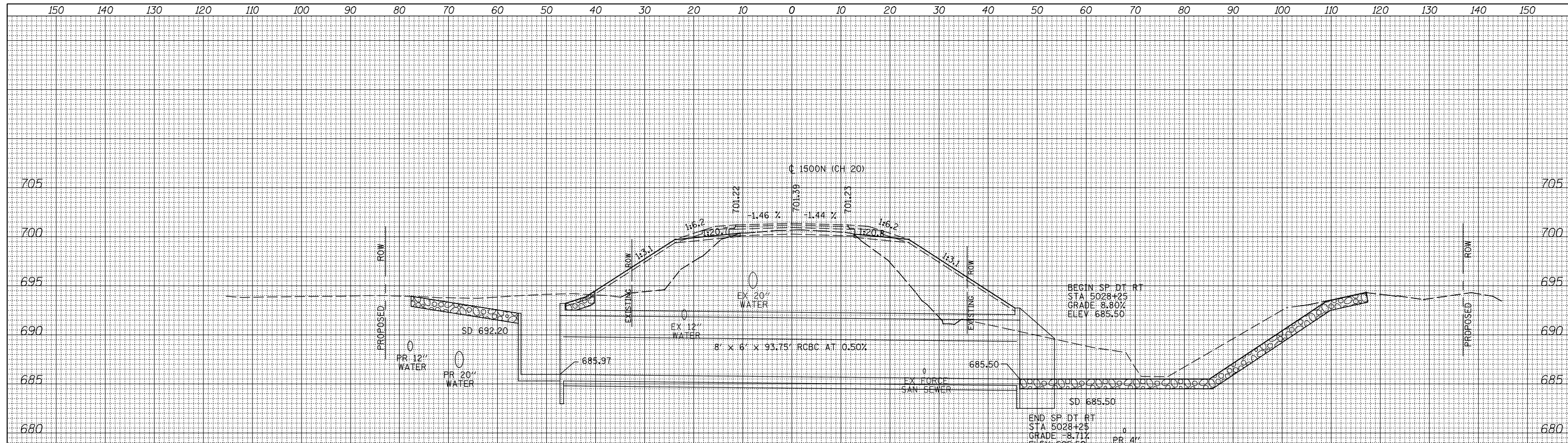
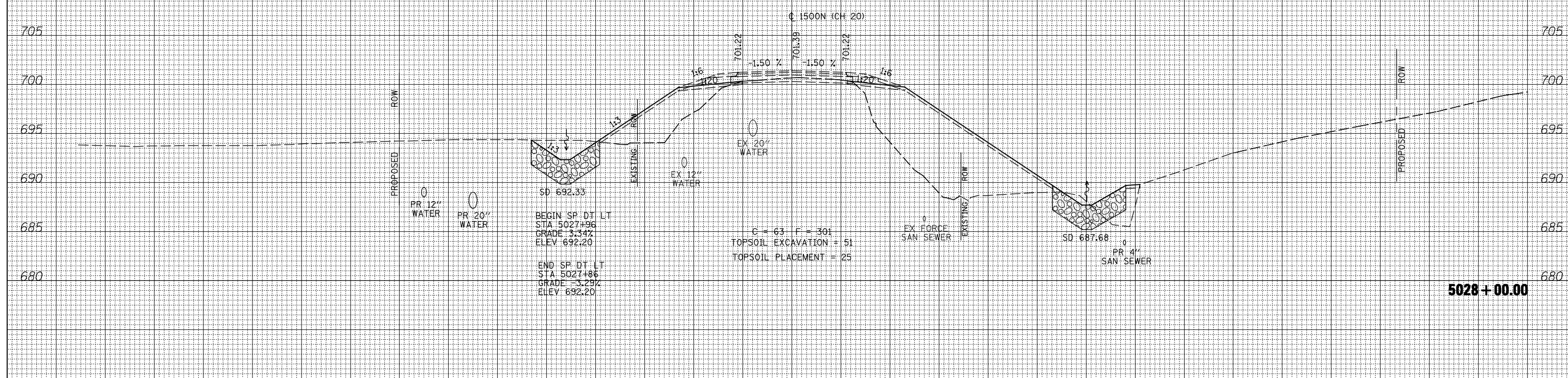


DATE	
BY	
FINAL SURVEY	SURVEYED
NOTE BOOK	PLOTTED
NO.	TEMPLATE
	AREAS CHECKED



5028 + 10.00
SKEW RT AH 15 DEG.

DATE	
BY	
ORIGINAL SURVEY	SURVEYED
NOTE BOOK	PLOTTED
NO.	TEMPLATE
	AREAS CHECKED



5028 + 00.00

FILE NAME =	USER NAME = jdeen	DESIGNED - JRB	REVISED -	F.A.P. RTE. 407	SECTION (55-3)A	COUNTY McDONOUGH	TOTAL SHEETS 671	SHEET NO. 577
V:\Transportation\2891\Grading Plans\2891XSHEET_CH20.dgn		DRAWN - TJD	REVISED -	STATE OF ILLINOIS DEPARTMENT OF TRANSPORTATION		CONTRACT NO. 68A42		ILLINOIS FED. AID PROJECT
PLOT SCALE = 20.00' / IN.		CHECKED - AWM	REVISED -	FAP 407 (IL RTE 336)		CROSS SECTIONS - 1500N (CH 20)		
PLOT DATE = 12/12/2012		DATE - 12-12-12	REVISED -	SCALE: 1/8" = 1' H, 1/8" = 1' V	SHEET NO. 20 OF 27 SHEETS	STA. 5028+00.00 TO STA. 5028+10.00		