

STATE OF ILLINOIS
DEPARTMENT OF TRANSPORTATION
DIVISION OF HIGHWAYS
PROPOSED
HIGHWAY PLANS

F.A.I. RTE.	SECTION	COUNTY	TOTAL SHEETS	SHEET NO.
74	SECTION 72(7,8,9,9-1)LS-4	PEORIA	10	1
		ILLINOIS	CONTRACT NO. 68B17	

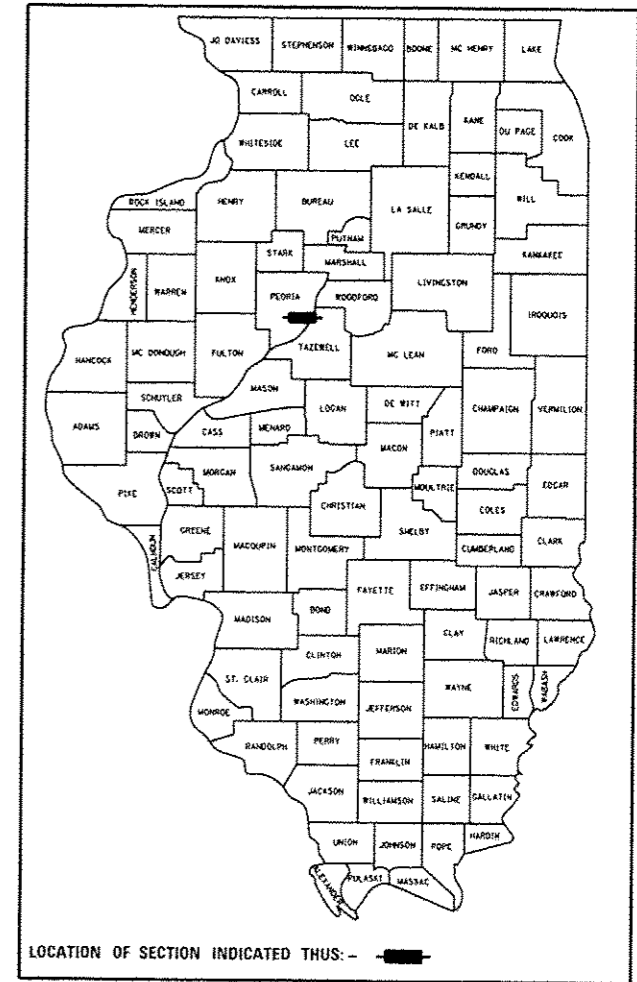
D-94-063-12

INDEX OF SHEETS

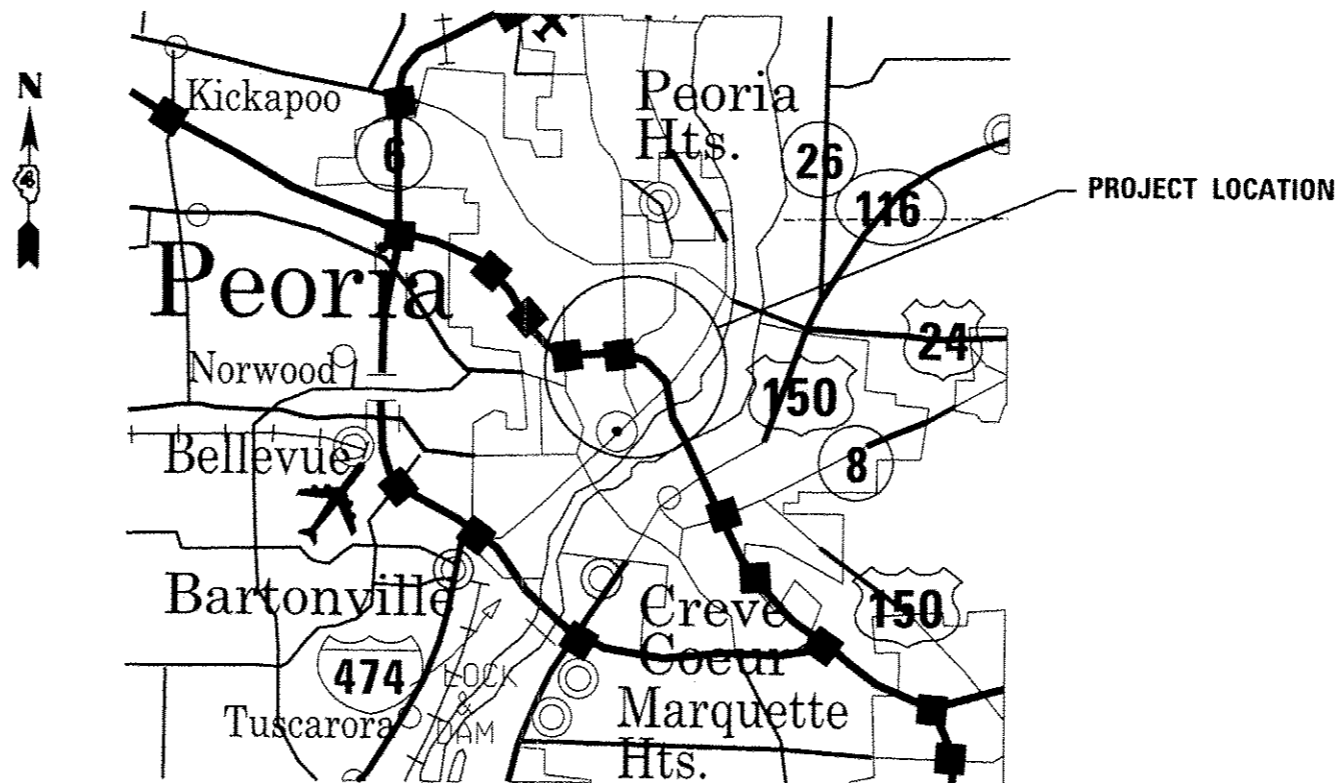
1. COVER SHEET
2. PROJECT SPECIFIC NOTES/COMMITMENTS/
CALENDAR OF MAINTENANCE
3. SUMMARY OF QUANTITIES
4. SCHEDULE OF EXISTING LANDSCAPING ITEMS
- 5-10. PLAN SHEETS

STANDARDS

- 701001-02
- 701006-04
- 701011-03
- 701106-02
- 701201-04
- 701301-04
- 701400-06
- 701406-06
- 701411-08
- 701426-05
- 701901-02
- 701101-03

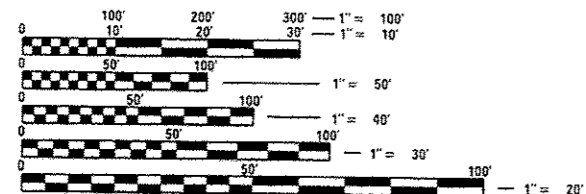


FAI ROUTE 74 (I-74)
SECTION 72(7,8,9,9-1)LS-4
PEORIA COUNTY
 C-94-106-12



PROJECT CONSISTS OF CARE AND MAINTENANCE OF EXISTING LANDSCAPING AND PLANTS ALONG EASTBOUND I-74 BETWEEN ELLIS STREET AND THE ILLINOIS RIVER.

GROSS LENGTH = 1.2 MILE
 NET LENGTH = 1.2 MILE



FULL SIZE PLANS HAVE BEEN PREPARED USING STANDARD ENGINEERING SCALES. REDUCED SIZED PLANS WILL NOT CONFORM TO STANDARD SCALES. IN MAKING MEASUREMENTS ON REDUCED PLANS, THE ABOVE SCALES MAY BE USED.

J.U.L.I.E.
 JOINT UTILITY LOCATION INFORMATION FOR EXCAVATION
 1-800-892-0123
 OR 811

PROJECT ENGINEER CHRISTOPHER MAUSHARD 309/671-3453
PROJECT MANAGER RAYMOND SAMARA 309/671-3477
CONTRACT NO. 68B17
CATALOG NO. 034835-00D

STATE OF ILLINOIS
 DEPARTMENT OF TRANSPORTATION
 DIVISION OF HIGHWAYS

SUBMITTED Dec 5 20 12
Joseph P. Brown
 DEPUTY DIRECTOR OF HIGHWAYS, REGION ENGINEER

Feb 1 20 13
John D. Baramelli, P.E.
 ENGINEER OF DESIGN AND ENVIRONMENT

Feb 1 20 13
Omer Osman, P.E.
 DIRECTOR OF HIGHWAYS, CHIEF ENGINEER

**PRINTED BY THE AUTHORITY
 OF THE STATE OF ILLINOIS**

PROJECT SPECIFIC GENERAL NOTES

THE CONTRACTOR WILL BE RESPONSIBLE FOR FIELD VERIFICATION OF LOCATIONS FOR ALL LANDSCAPING ITEMS.

THE REMOVAL OF DEAD UNDERBRUSH, DEBRIS, LITTER, AND OTHER MISCELLANEOUS ITEMS SHALL BE COMPLETED AND WILL BE CONSIDERED INCLUDED IN THE COST OF THE ASSOCIATED PAY ITEMS.

"SHRUB CARE" SHALL INCLUDE THE TRIMMING OF SHRUBS AROUND JUNCTION BOXES AND WILL BE CONSIDERED INCLUDED IN THE AGREED UNIT COST FOR "SHRUB CARE".
SEE PAGES 8-10 FOR JUNCTION BOXES.

COMMITMENTS

COMMITMENTS ARE NOT TO BE ALTERED WITHOUT THE WRITTEN CONSENT OF ALL PARTIES TO WHICH THE COMMITMENT WAS MADE

NO COMMITMENTS HAVE BEEN MADE ON THIS PROJECT.

CALENDAR OF MAINTENANCE

WORK DATES

MAINTENANCE WORK

FROM	TO	MAINTENANCE WORK
June 1	June 30	Mow turf areas to a height of 3 inches by IDOT.
June 1	June 30	Perennial plant care.
June 1	June 30	Woody plant care. Work cycle must be complete and acceptable on the inspection date of June 30.
	June 30	Inspection of all woody and perennial plant care.

PLOT SCALE = 24,000 / 1" = 100' PLOT DATE = 12-18-2012	DESIGNED -	REVISED -	STATE OF ILLINOIS DEPARTMENT OF TRANSPORTATION	GENERAL NOTES AND COMMITMENTS			F.A.I. RTE.	SECTION	COUNTY	TOTAL SHEETS	SHEET NO.
	DRAWN -	REVISED -					74	T2(7,8,9)-ILS-4	PEORIA	10	2
CHECKED -	REVISED -	SCALE: SHEET NO. OF SHEETS STA. TO STA.			CONTRACT NO. 68B17						
DATE -	REVISED -				ILLINOIS FED. AID PROJECT						

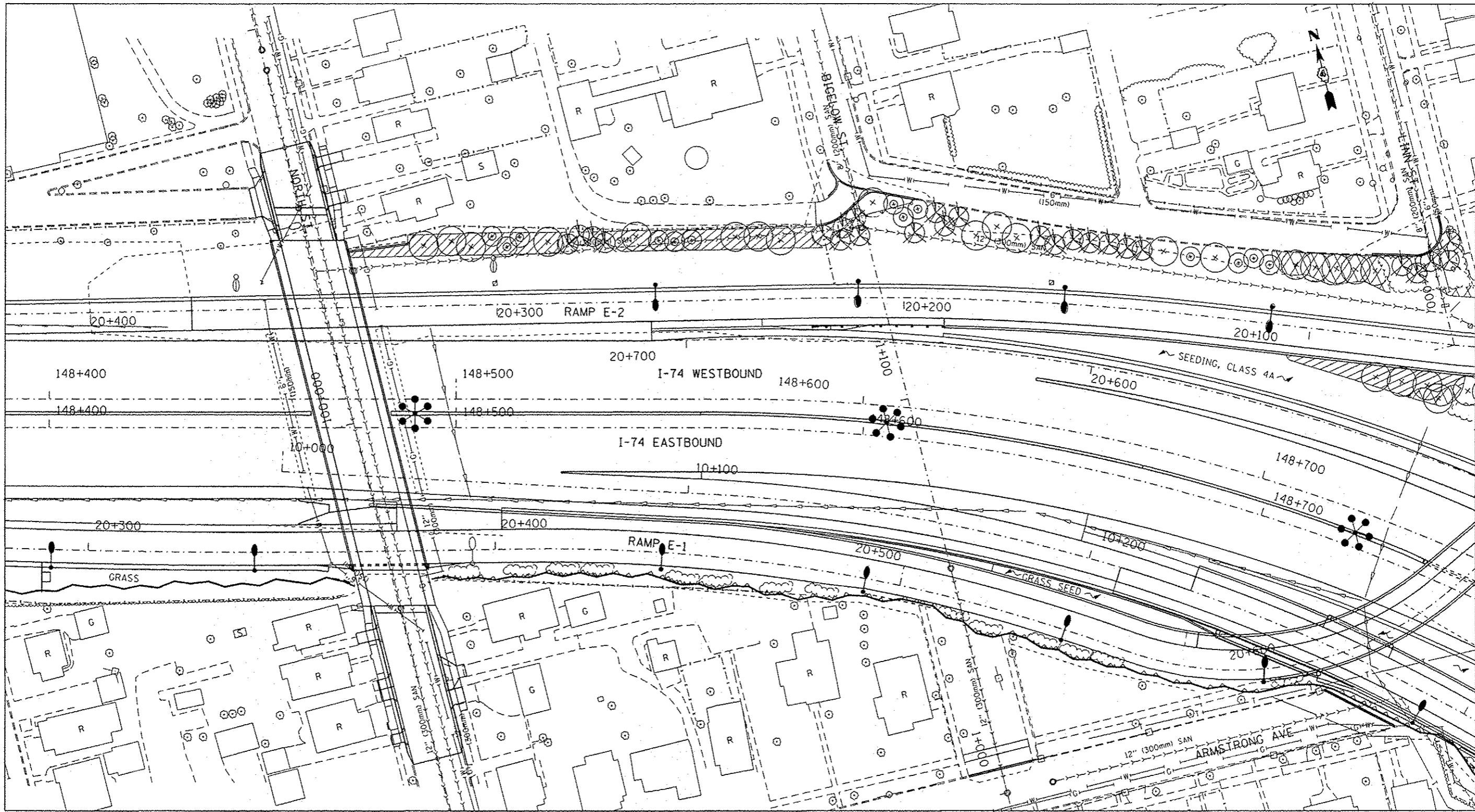
SCHEDULE OF EXISTING PLANTINGS

KEY	ITEM	COMMON NAME	SIZE	UNIT	TOTAL	LOCATION						
						L1	L2	L3	L4	L5	L6	
	DECIDUOUS TREESXXX											
CC	CARYA CORDIFORMIS	BITTERNUT HICKORY	1-1/2" CALIPER, BALLED AND BURLAPPED	EACH	14	4	0	0	8	2	0	
GD	GYMNOCLADUS DIOICUS	KENTUCKY COFFEETREE	2-1/2" CALIPER, BALLED AND BURLAPPED	EACH	20	0	0	0	19	1	0	
QA	QUERCUS BICOLOR	SWAMP OAK	2" CALIPER, BALLED AND BURLAPPED	EACH	79	6	19	3	1	9	41	
AN	ACER NIGRUM	BLACK MAPLE	2-1/2" CALIPER, BALLED AND BURLAPPED	EACH	14	5	8	0	0	1	0	
GB	GINKGO BILOBA	GINKGO	3" CALIPER, BALLED AND BURLAPPED	EACH	19	4	8	0	0	0	7	
GT	GLEDTISIA TRIACANTHOS INERMIS SKYLINE	SKYLINE THORNLESS HONEYLOCUST	2-1/2" CALIPER, BALLED AND BURLAPPED	EACH	24	0	0	2	0	5	17	
UR	ULMUS 'REGAL	REGAL ELM	2-1/2" CALIPER, BALLED AND BURLAPPED	EACH	35	0	19	0	0	0	16	
	ORNAMENTAL TREES											
AC	AMELANCHIER X GRANDIFLORA	AMELANCHIER X GRANDIFLORA	6' HEIGHT, SHRUB FORM, BALLED AND BURLAPPED	EACH	37	0	5	6	6	3	17	
SA	SYRINGA RETICULATA	SYRINGA RETICULATA	7' HEIGHT, CLUMP FORM, BALLED AND BURLAPPED	EACH	42	4	18	0	0	0	20	
SP	SYRINGA PEKINENSIS	SYRINGA PEKINENSIS	7' HEIGHT, CLUMP FORM, BALLED AND BURLAPPED	EACH	7	0	0	0	7	0	0	
MP	MALUS PRAIRIFIRE	PRAIRIFIRE CRABAPPLE	6' HEIGHT, CLUMP FORM, BALLED AND BURLAPPED	EACH	36	6	19	5	1	5	0	
	EVERGREEN TREES											
PN	PINUS NIGRA	AUSTRIAN PINE	3' HEIGHT, CONTAINER	EACH	86	28	22	6	13	11	6	
	SHRUBS											
AF	AMOPHA FRUITCOSA	INDIGO BUSH	CONTAINER GROWN, 3-GALLON	EACH	91	0	62	0	0	29	0	
FS	FORSYTHIA NORTHERN SUN	NORTHERN SUN BORDER FORSYTHIA	3' HEIGHT, CONTAINER	EACH	489	0	90	0	0	204	195	
HV	HAMAMELIS VERNALIS	VERNAL WITCH HAZEL	2' HEIGHT, BALLED AND BURLAPPED	EACH	187	0	167	0	20	0	0	
HA	HYDRANGEA ARBORESCENS ANNABELLE	ANNABELLE SMOOTH HYDRANGEA	2' HEIGHT CONTAINER	EACH	22	0	0	5	17	0	0	
PA	PEROVSKIA ATRIPLICIFOLIA	PEROVSKIA ATRIPLICIFOLIA	PEROVSKIA ATRIPLICIFOLIA	EACH	1290	0	880	410	0	0	0	
RA	RHUS AROMATICA	FRAGRANT SUMAC	2' WIDTH, CONTAINER	EACH	2863	69	640	0	777	184	1193	
RG	RHUS GLABRA	SMOOTH SUMAC	3' HEIGHT, CONTAINER	EACH	663	68	418	165	0	12	0	
SPA	SYRINGA PATULA MISS KIM	MISS KIM MANCHURIAN LILAC	2' HEIGHT, CONTAINER	EACH	824	0	365	296	63	0	100	
RS	RHODOTYPOS SCANDENS	BLACK JETBEAD	3' HEIGHT, CONTAINER	EACH	1510	290	725	435	24	36	0	
RH	ROBINIA HISPIDA	BRISTLY LOCUST	3' HEIGHT, CONTAINER	EACH	351	0	0	100	0	89	162	
RR	ROSA RUGOSA X MEIDOMONAC BONICA	BONICA RUGOSO ROSA	3' HEIGHT, CONTAINER	EACH	155	0	0	155	0	0	0	
RRC	ROSA RUGOSA X CHUCKLES	CHUCKLES RUGOSA ROSA	3' HEIGHT, CONTAINER	EACH	1750	0	220	570	330	0	630	
	EVERGREEN SHRUBS											
JH	JUNIPERUS HORIZONTALIS HUGHES	HUGHES CREEPING JUNIPER	18" WIDTH, CONTAINER	EACH	1120	0	0	260	144	297	419	
JC	JUNIPERUS CHINENSIS	KALLAYS COMPACTA	18" WIDTH, CONTAINER	EACH	1258	0	647	290	122	117	82	
	VINES											
PQ	PARTHENOCISSUS QUINQUEFOLIA	VIRGINIA CREEPER	1-GALLON POT	EACH	291	40	65	0	56	74	56	
JT	PARTHENOCISSUS TRICUSPIDATA	BOSTON IVY	1-GALLON POT	EACH	72	48	0	0	0	24	0	
CT	CLEMATIS MAXIMOWICZIANA	SWEET AUTUMN CLEMATIS	3-GALLON POT	EACH	85	14	9	0	62	0	0	
CR	CAMPIS RADICAN	MINNESOTA TRUMPET VINE	1-GALLON POT	EACH	45	0	0	0	21	24	0	
LS	LONICERA SEMPERVIRENS	HONEYSUCKLE	1-GALLON POT	EACH	567	8	26	0	0	418	115	
	PERENNIALS AND GROUNDCOVERS											
	PERENNIAL PLANTS, WILDFLOWERS	PERENNIAL PLANTS, WILDFLOWERS		HA	0.19	0.07	0.03	0.00	0.00	0.00	0.09	
	PERENNIAL PLANTS, FOR SUN	PERENNIAL PLANTS, FOR SUN	1-GALLON POT, 12" O.C.	EACH	28103	2153	4965	11750	0	0	9235	
	MOBILIZATION											
	TRAFFIC CONTROL AND PROTECTION (SPECIAL)			L.S.	1							

LEGEND:

- L1 LANDSCAPE LAYOUT-1
- L2 LANDSCAPE LAYOUT-2
- L3 LANDSCAPE LAYOUT-3
- L4 LANDSCAPE LAYOUT-4
- L5 LANDSCAPE LAYOUT-5
- L6 LANDSCAPE LAYOUT-6

THIS SCHEDULE IS PROVIDED FOR INFORMATION ON LOCATION OF EXISTING PLANTINGS



LEGEND

- VINES ON SOUND/RETAINING WALL
- SHRUBS
- EVERGREEN TREE
- SMALL ORNAMENTAL TREE
- SHADE TREE (5' DIA. MULCH SAUCER-TYP. -FOR ALL TREES & SHRUBS)
- PERENNIAL PLANTS, WILDFLOWERS
- PERENNIAL PLANTS, FOR SUN

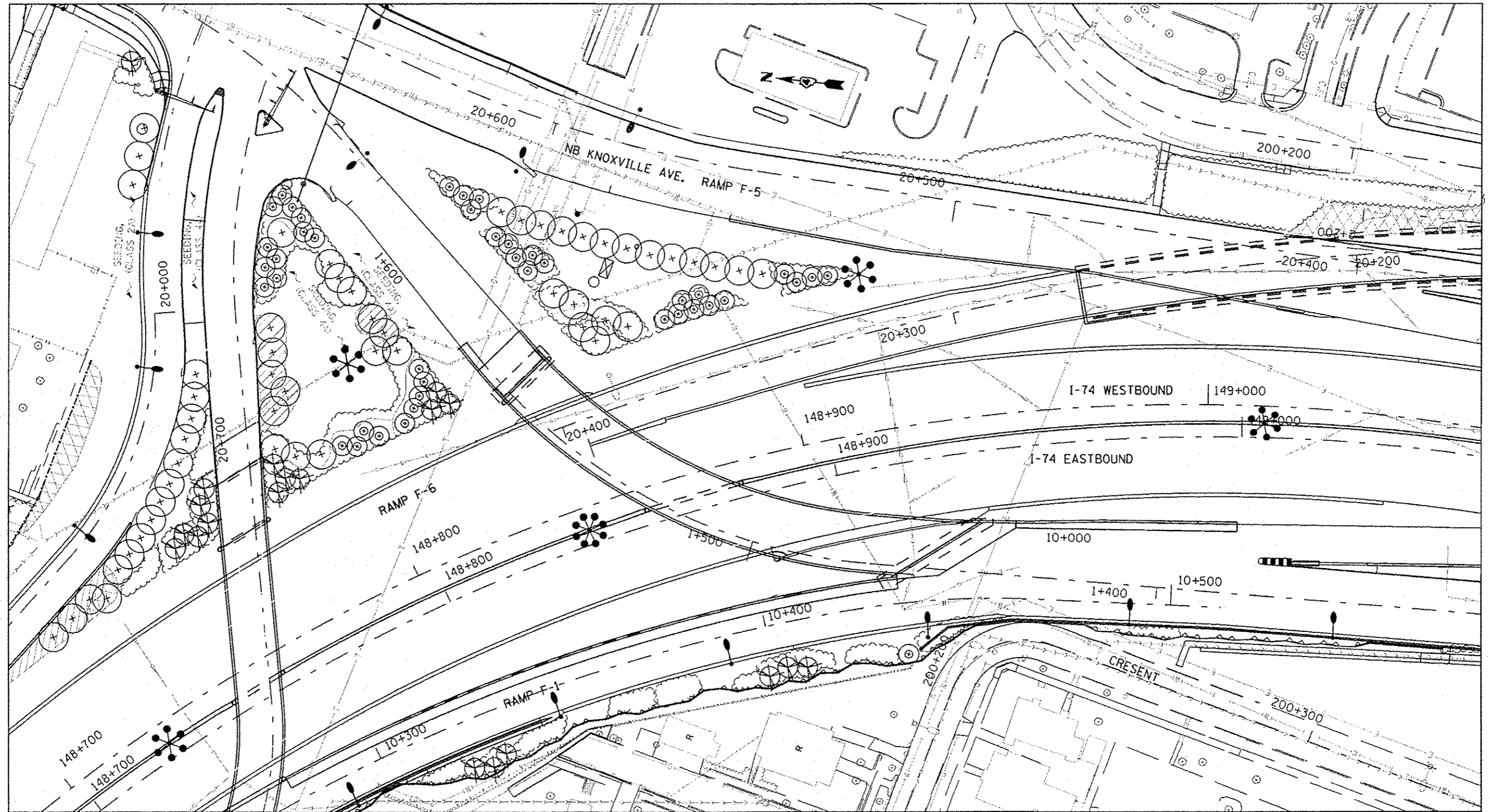
DESIGNED -	REVISED -
DRAWN -	REVISED -
CHECKED -	REVISED -
DATE -	REVISED -

**STATE OF ILLINOIS
DEPARTMENT OF TRANSPORTATION**

**PLAN SHEET
LAYOUT 1**

SCALE: SHEET NO. OF SHEETS STA. TO STA.

F.A.I. RTE. 74	SECTION 72(7,8,9,9-1)LS-4	COUNTY PEORIA	TOTAL SHEETS 10	SHEET NO. 5
CONTRACT NO. 68B17				
ILLINOIS FED. AID PROJECT				



LEGEND

- VINES ON SOUND/RETAINING WALL
- SHRUBS
- EVERGREEN TREE
- SMALL ORNAMENTAL TREE
- SHADE TREE (5' DIA. MULCH SAUCER-TYP. -FOR ALL TREES & SHRUBS)
- PERENNIAL PLANTS, WILDFLOWERS
- PERENNIAL PLANTS, FOR SUN

DESIGNED -	REVISED -
DRAWN -	REVISED -
CHECKED -	REVISED -
DATE -	REVISED -

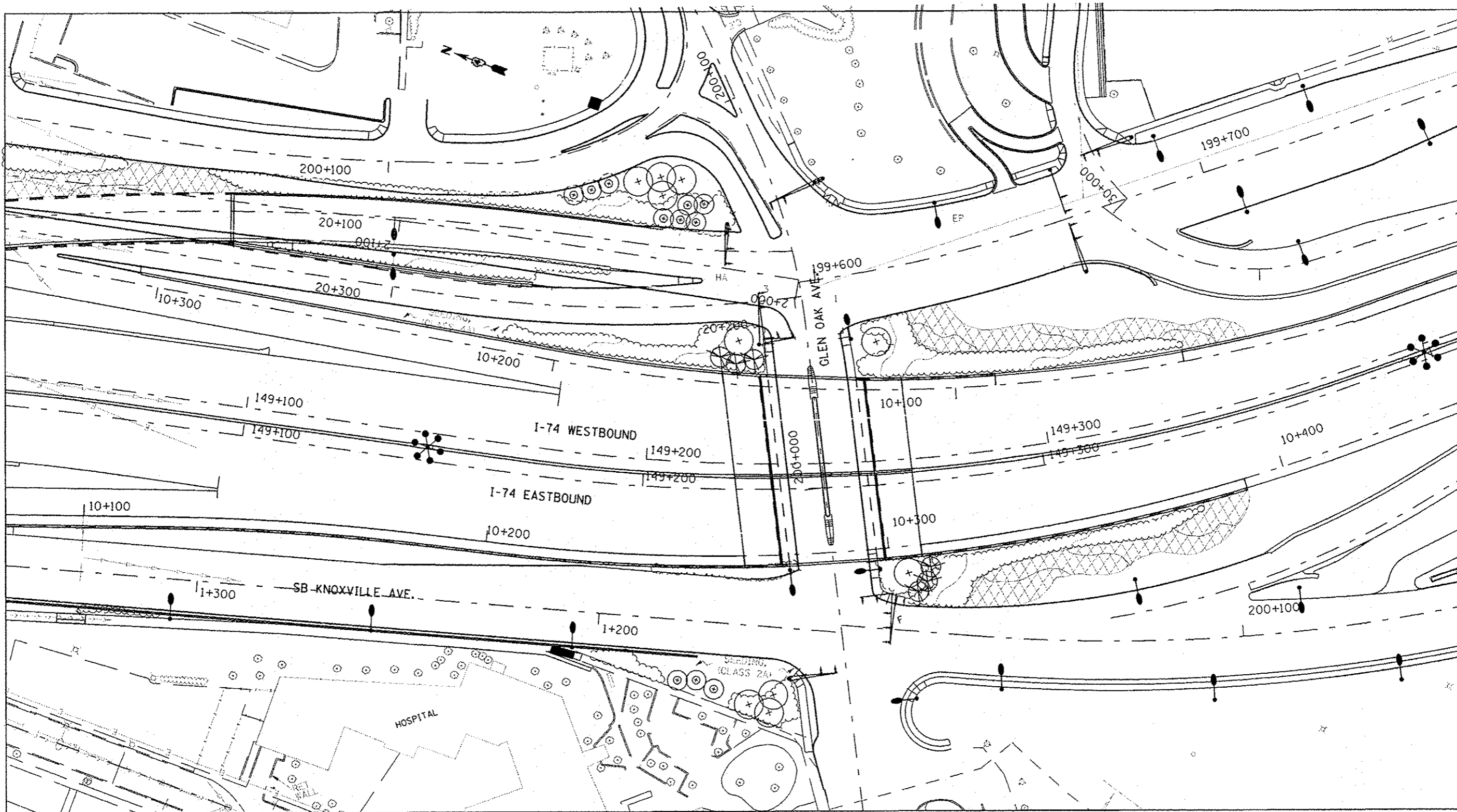
PLOT SCALE = 24,000
PLOT DATE = 12-18-2012

STATE OF ILLINOIS
DEPARTMENT OF TRANSPORTATION

PLAN SHEET
LAYOUT 2

SCALE: SHEET NO. OF SHEETS STA. TO STA.

F.A.I. RTE. 74	SECTION 72(7,8,9-1)S-4	COUNTY PEORIA	TOTAL SHEETS 10	SHEET NO. 6
CONTRACT NO. 68B17				
ILLINOIS FED. AID PROJECT				



LEGEND

- VINES ON SOUND/RETAINING WALL
- SHRUBS
- EVERGREEN TREE
- SMALL ORNAMENTAL TREE
- SHADE TREE (5' DIA. MULCH SAUCER-TYP. -FOR ALL TREES & SHRUBS)
- PERENNIAL PLANTS, WILDFLOWERS
- PERENNIAL PLANTS, FOR SUN

DESIGNED -	REVISED -
DRAWN -	REVISED -
CHECKED -	REVISED -
DATE -	REVISED -

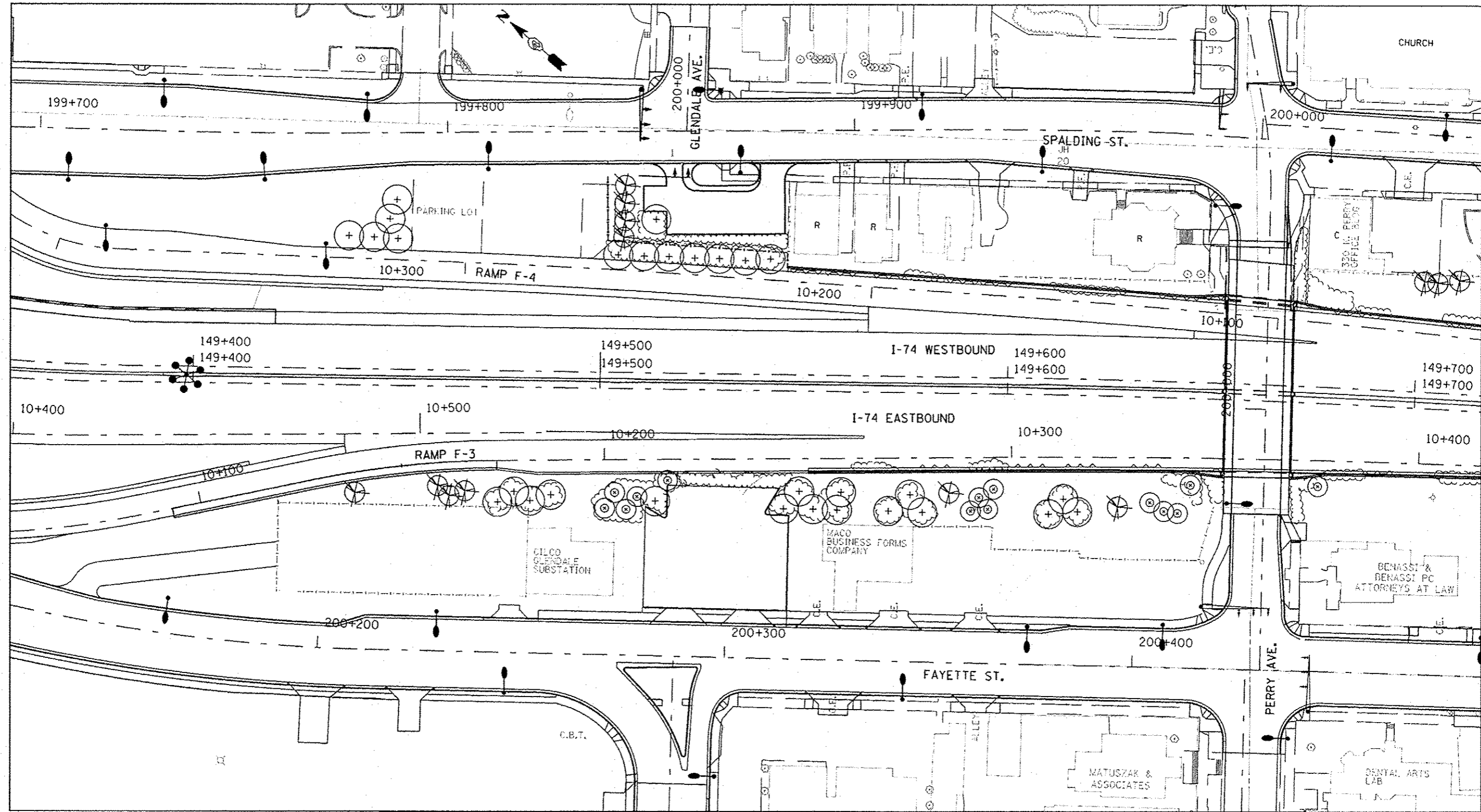
PLOT SCALE = 24,000" = 1" IN.
PLOT DATE = 12-18-2012

**STATE OF ILLINOIS
DEPARTMENT OF TRANSPORTATION**

**PLAN SHEET
LAYOUT 3**

SCALE: SHEET NO. OF SHEETS STA. TO STA.

F.A.I. RTE. 74	SECTION 72(7.8,9,9-1)LS-4	COUNTY PEORIA	TOTAL SHEETS 10	SHEET NO. 7
CONTRACT NO. 68B17			ILLINOIS FED. AID PROJECT	



LEGEND

- VINES ON SOUND/RETAINING WALL
- SHRUBS
- EVERGREEN TREE
- SMALL ORNAMENTAL TREE
- SHADE TREE (5' DIA. MULCH SAUCER-TYP. -FOR ALL TREES & SHRUBS)
- PERENNIAL PLANTS, WILDFLOWERS
- PERENNIAL PLANTS, FOR SUN

DESIGNED -	REVISOR -
DRAWN -	REVISOR -
CHECKED -	REVISOR -
DATE -	REVISOR -

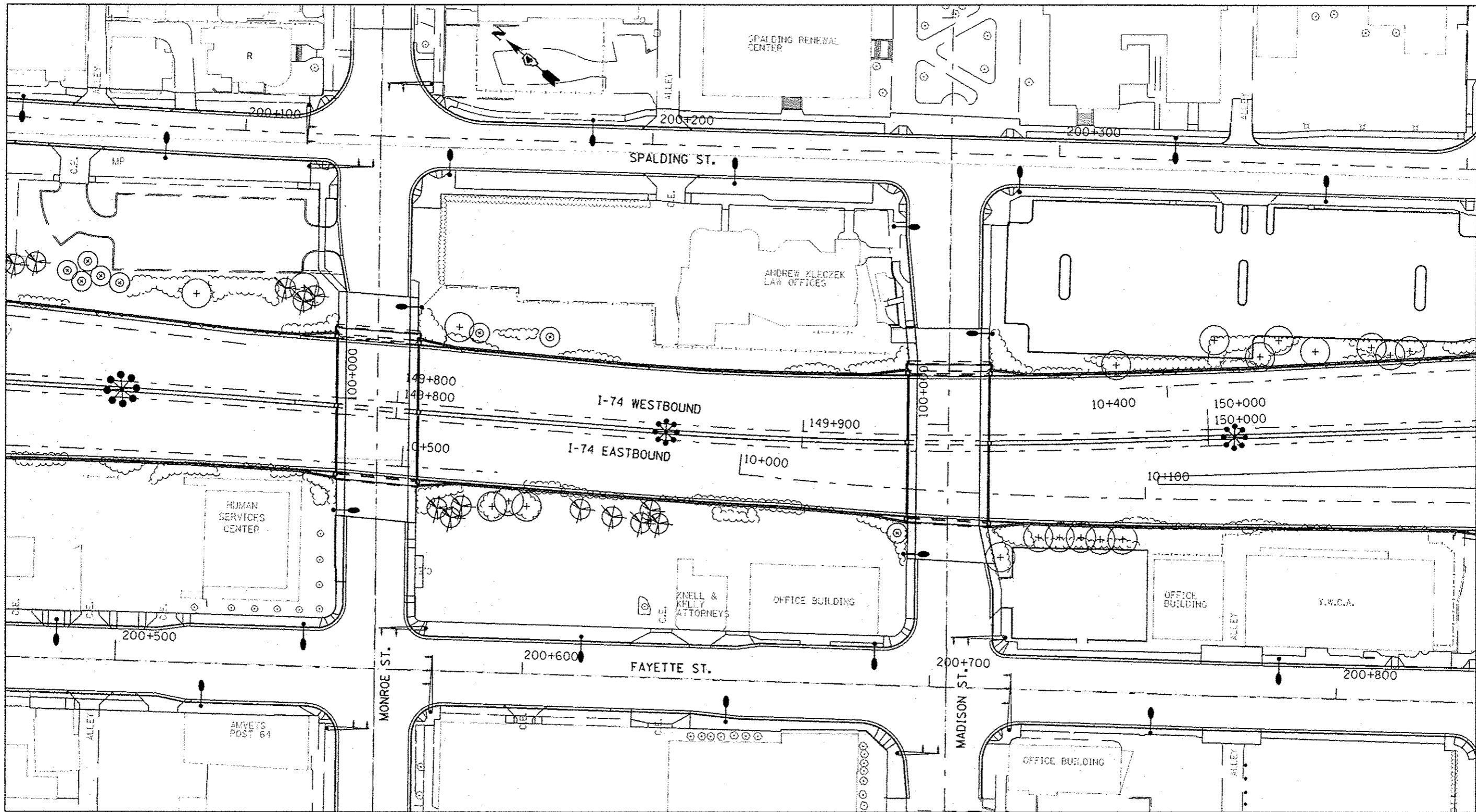
STATE OF ILLINOIS
DEPARTMENT OF TRANSPORTATION

PLAN SHEET
LAYOUT 4

SCALE: SHEET NO. OF SHEETS STA. TO STA.

F.A.I. RTG.	SECTION	COUNTY	TOTAL SHEETS	SHEET NO.
74	7217,8,9,9-11L5-4	PEORIA	10	8
CONTRACT NO. 68B17				

ILLINOIS FED. AID PROJECT



LEGEND

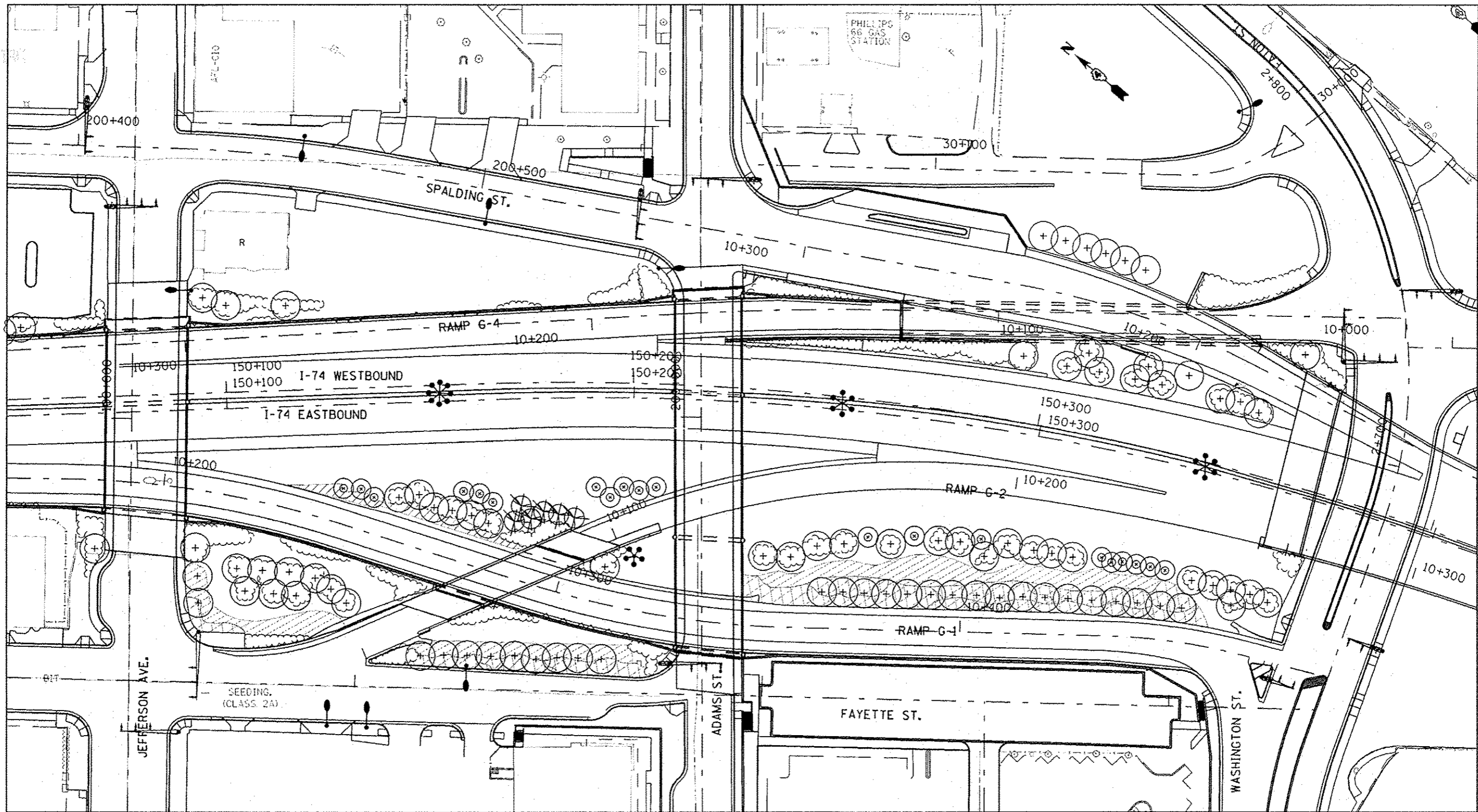
- VINES ON SOUND/RETAINING WALL
- SHRUBS
- EVERGREEN TREE
- SMALL ORNAMENTAL TREE
- SHADE TREE (5' DIA. MULCH SAUCER-TYP. -FOR ALL TREES & SHRUBS)
- PERENNIAL PLANTS, WILDFLOWERS
- PERENNIAL PLANTS, FOR SUN

DESIGNED -	REVISED -
DRAWN -	REVISED -
CHECKED -	REVISED -
DATE -	REVISED -

**STATE OF ILLINOIS
DEPARTMENT OF TRANSPORTATION**

PLAN SHEET LAYOUT 5			
SCALE:	SHEET NO.	OF SHEETS	STA. TO STA.

F.A.I. RTE.	SECTION	COUNTY	TOTAL SHEETS	SHEET NO.
74	72(7,8,9,9-1)LS-4	PEORIA	10	9
CONTRACT NO. 68B17				
ILLINOIS FED. AID PROJECT				



LEGEND

- VINES ON SOUND/RETAINING WALL
- SHRUBS
- EVERGREEN TREE
- SMALL ORNAMENTAL TREE
- SHADE TREE (5' DIA. MULCH SAUCER-TYP. -FOR ALL TREES & SHRUBS)
- PERENNIAL PLANTS, WILDFLOWERS
- PERENNIAL PLANTS, FOR SUN

DESIGNED -	REVISED -
DRAWN -	REVISED -
CHECKED -	REVISED -
DATE -	REVISED -

**STATE OF ILLINOIS
DEPARTMENT OF TRANSPORTATION**

PLAN SHEET LAYOUT 6			
SCALE:	SHEET NO.	OF SHEETS	STA. TO STA.

F.A.I. RTE.	SECTION	COUNTY	TOTAL SHEETS	SHEET NO.
74	7217.8.9.9-1HLS-4	PEORIA	10	10
CONTRACT NO. 68B17				
ILLINOIS FED. AID PROJECT				