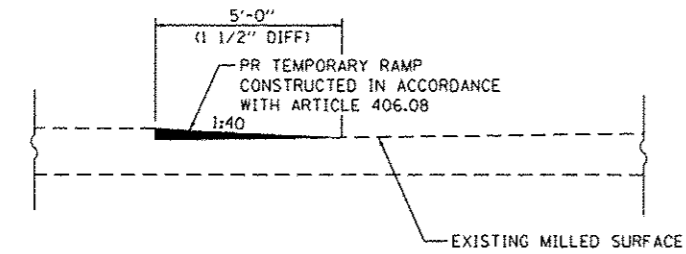


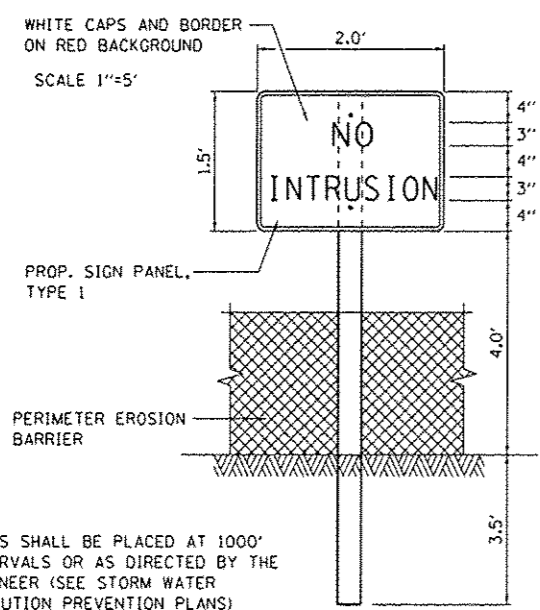
**BUTT JOINT DETAIL**

STA 140+00.00 TO STA 140+30.00  
STA 153+70.00 TO STA 154+00.00

SCALE 1"=10'



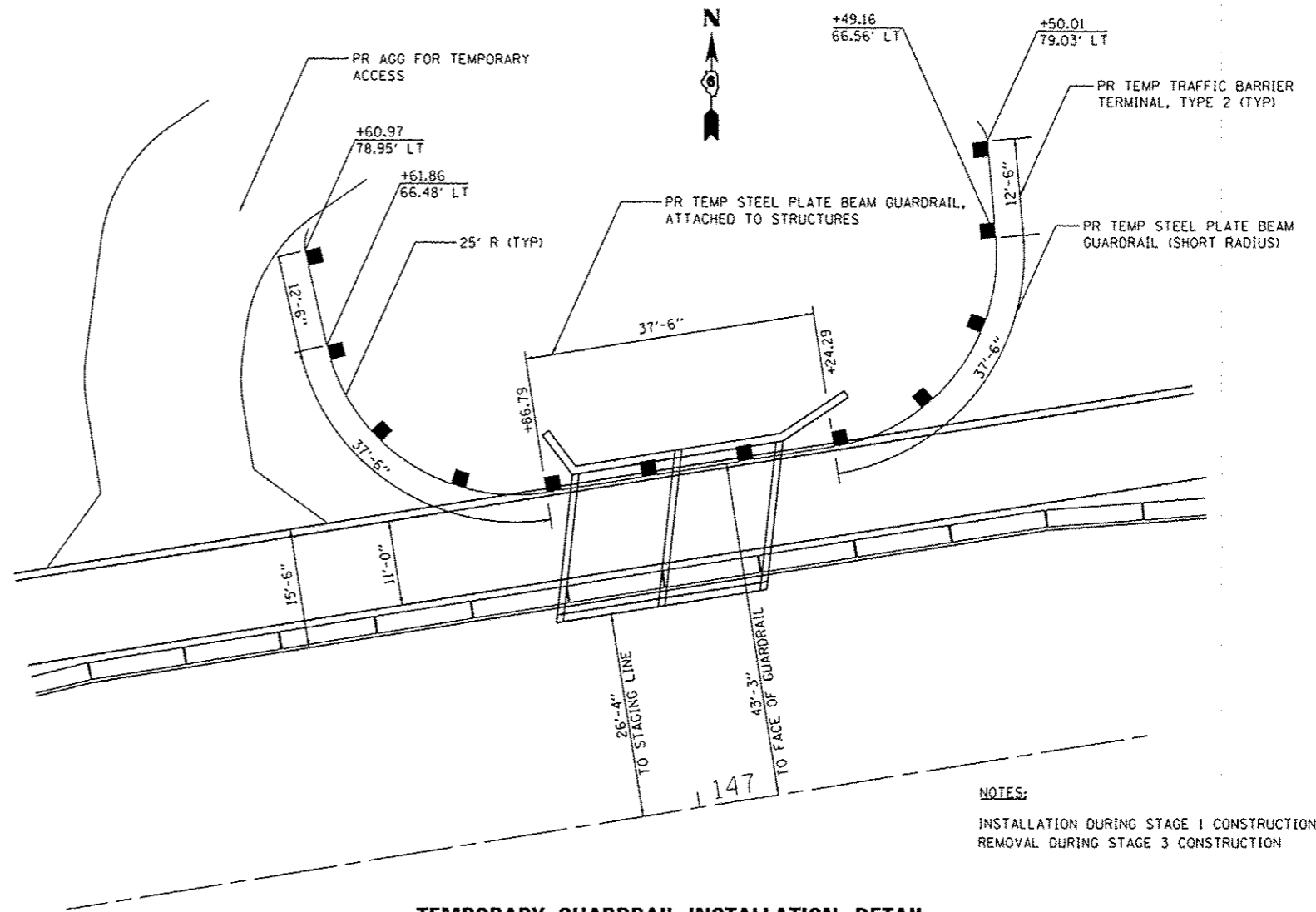
**TEMPORARY RAMP DETAIL**



**TEMPORARY SIGN DURING CONSTRUCTION  
PROTECTED AREA SIGNING (PRAIRIE GRASS AREAS)**

LOCATIONS AS SHOWN ON THE STORM WATER  
POLLUTION PREVENTION PLANS

SIGNS SHALL BE PLACED AT 1000'  
INTERVALS OR AS DIRECTED BY THE  
ENGINEER (SEE STORM WATER  
POLLUTION PREVENTION PLANS)



**TEMPORARY GUARDRAIL INSTALLATION DETAIL**

STA 146+60.97 TO STA 147+50.01  
SCALE 1"=10'

**NOTES:**  
INSTALLATION DURING STAGE 1 CONSTRUCTION  
REMOVAL DURING STAGE 3 CONSTRUCTION

FILE NAME = \\p:\projects\7262\p\7262.dgn  
 MODEL = 7262.dwg  
 PLOT DRIVER = PLOTDRY6\$



USER NAME	aparkag	DESIGNED	MCV
FILE NAME	0672062.dwg	DRAWN	CMW
PLOT SCALE	100.0000 1/16"	CHECKED	MTM
PLOT DATE	Dec-10-2012 10:20:06AM	DATE	12/12

SHEET	2-28-2013
REVISED	
REVISED	
REVISED	

STATE OF ILLINOIS  
DEPARTMENT OF TRANSPORTATION

SCALE:		SHEET NO. 1 OF 1 SHEETS		STA.	TO STA.
--------	--	-------------------------	--	------	---------

MISCELLANEOUS DETAILS

F.A.P. RTE.	SECTION	COUNTY	TOTAL SHEETS	SHEET NO.
685	1138-4	HANCOCK	57	41
CONTRACT NO. 7262				
ILLINOIS FED. AID PROJECT				