

GENERAL NOTES

GENERAL NOTES

- ① WHERE SECTION OR SUBSECTION MONUMENTS ARE ENCOUNTERED, THE ENGINEER SHALL BE NOTIFIED BEFORE SUCH MONUMENTS ARE REMOVED. THE CONTRACTOR SHALL PROTECT AND CAREFULLY PRESERVE ALL PROPERTY MARKS AND MONUMENTS UNTIL THE OWNER, AND AUTHORIZED SURVEYOR OR AGENT HAS WITNESSES OR OTHERWISE REFERENCED THEIR LOCATION.
- ② THE NOMINAL THICKNESS FOR BASE AND SURFACE COURSES ARE SHOWN ON THE TYPICAL SECTIONS, STANDARDS, SCHEDULES, OR SPECIAL DETAILS. THE CONSTRUCTED THICKNESS OF THE ABOVE ITEM SHALL NOT BE LESS THAN 90 PERCENT OF THE NOMINAL THICKNESS AT ANY LOCATION.
- ③ THE THICKNESS OF THE HMA MIXTURE SHOWN ON THE PLANS IS THE NOMINAL THICKNESS. DEVIATIONS FROM THE NOMINAL THICKNESS WILL BE PERMITTED WHEN SUCH DEVIATION OCCUR DUE TO IRREGULARITIES IN THE EXISTING SURFACE OR BASE ON WHICH THE HOT-MIX ASPHALT MIXTURE IS PLACED.
- ④ ANY REFERENCE TO A STANDARD IN THE PLANS SHALL BE INTERPRETED TO MEAN THE EDITION, AS INDICATED BY THE SUB-NUMBER LISTED IN THE INDEX OF SHEETS.
- ⑤ THE CONTRACTOR SHALL BE RESPONSIBLE FOR PROTECTING UTILITY PROPERTY FROM CONSTRUCTION OPERATIONS AS OUTLINED IN ARTICLE 107.31 OF THE STANDARD SPECIFICATIONS. THE JULIE NUMBER IS 800-892-0123. A MINIMUM OF FORTY-EIGHT HOURS ADVANCED NOTICE IS REQUIRED. ANY DAMAGE TO THE UNDERGROUND FACILITIES CAUSED BY THE CONTRACTOR SHALL BE REPAIRED TO THE SATISFACTION OF THE DEPARTMENT AT THE CONTRACTOR'S EXPENSE, INCLUDING TEMPORARY REPAIRS WHICH MAY BE REQUIRED TO KEEP THE FACILITY OPERATIONAL WHILE MATERIAL IS BEING OBTAINED TO MAKE PERMANENT REPAIRS.
- ⑥ THE LOCATIONS OF THOSE BURIED AND ABOVEGROUND UTILITIES SHOWN ARE APPROXIMATE, ARE SHOWN FOR CONTRACTOR INFORMATIONAL USE ONLY, AND ARE NOT TO BE REFERENCED FOR CONSTRUCTION PURPOSES. THE IMPLIED PRESENCE OR ABSENCE OF UTILITIES IS NOT TO BE CONSTRUED BY THE OWNER, ENGINEER, CONTRACTOR OR SUBCONTRACTORS TO BE AN ACCURATE AND COMPLETE REPRESENTATION OF UTILITIES THAT MAY OR MAY NOT EXIST ON THE CONSTRUCTION SITE. BURIED AND ABOVE GROUND UTILITY LOCATIONS, IDENTIFICATION, AND MARKING ARE THE SOLE RESPONSIBILITY OF THE CONTRACTOR, REROUTING, DISCONNECTION, PROTECTION, ...ETC OF ANY UTILITIES MUST BE COORDINATED BETWEEN CONTRACTOR, UTILITY COMPANY, AND OWNER. SITE SAFETY, INCLUDING THE AVOIDANCE OF HAZARDOUS ASSOCIATED WITH BURIED AND ABOVE GROUND UTILITIES REMAIN THE SOLE RESPONSIBILITY OF THE CONTRACTOR.
- ⑦ THE FOLLOWING MIXTURE REQUIREMENTS ARE APPLICABLE:

LOCATION(S):	US 24/IL 96	US 24/IL 96	US 24/IL96	US 24/IL96	US 24/IL 96
MIXTURE USE(S):	HMA CONC SURF CSE	PATCHING	HMA BASE CSE 11"	HMA BASE CSE WID 11"	HMA SHOULDERS 6.5"
AC/PG:	PG 64-22	PG 64-22	PG 64-22	PG 64-22	PG 58-22
DESIGN AIR VOIDS	4.0 @ N design = 70	4.0 @ N design = 70	4.0 @ N design = 70	4.0 @ N design = 70	2.0 @ N design = 30
MIXTURE COMPOSITION (Gradation Mixture)	IL 9.5 OR 12.5	IL 19.0	IL 19.0	IL 19.0	BAM MIX (Other)
FRICTION AGGREGATE	MIX "D"	N/A	N/A	N/A	N/A

US 24/IL 96	Side Rds. & Entr.
LEV BIND	INCIDENTAL HMA SURF
PG 64-22	PG 64-22
4.0 @ N design = 70	4.0 @ N design = 50
IL 9.5	IL 9.5 OR 12.5
N/A	MIX "C"

- ⑧ IN ADDITION TO FIELD AND AERIAL SURVEYS, PLAN DIMENSIONS AND DETAILS RELATIVE TO THE EXISTING FACILITIES HAVE BEEN TAKEN FROM EXISTING PLANS AND ARE SUBJECT TO CONSTRUCTION VARIATIONS. IT SHALL BE THE CONTRACTOR'S RESPONSIBILITY TO VERIFY SUCH DIMENSIONS AND DETAILS IN THE FIELD. SUCH VARIATIONS SHALL NOT BE A CAUSE FOR ADDITIONAL COMPENSATION DUE TO A CHANGE IN THE SCOPE OF WORK. HOWEVER, THE CONTRACTOR WILL BE PAID FOR THE QUANTITY ACTUALLY FURNISHED AT THE UNIT PRICE BID FOR THE WORK.
- ⑨ THE EXACT LOCATIONS AND SIZES OF PAVEMENT PATCHES SHALL BE DETERMINED BY THE ENGINEER IN THE FIELD.

RATES OF APPLICATION TABLES

THE FOLLOWING RATES OF APPLICATION HAVE BEEN ASSUMED IN CALCULATING PLAN QUANTITIES.

BITUMINOUS MATERIALS (PRIME COAT): 0.00038 TON / SQ YD (ON PAVEMENT)
 0.001425 TON / SQ YD (ON AGGREGATE)
 AGGREGATE MATERIALS (PRIME COAT): 0.002 TON / SQ YD
 HMA SURFACE MIX D / BINDER (112 LBS): 0.056 TON / SQ YD • In
 AGGREGATE MATERIALS: 2.05 TON / CU YD

COMMITMENTS

THE RESIDENT ENGINEER SHALL CONTACT STUDIES AND PLANS CONCERNING ANY MAJOR PLAN CHANGE. TO MAKE SURE NO PREVIOUS COMMENTS (NOT LISTED) WERE MADE AFFECTING THE DESIGN AND ALLOW AN IMPROVED DESIGN FOR FUTURE PROJECTS.

INDEX OF SHEETS

- 1 COVER SHEET
- 2 INDEX OF SHEETS, LISTS OF STANDARDS, GENERAL NOTES AND COMMITMENTS
- 3 - 13 SUMMARY OF QUANTITIES (11)
- 14 - 38 SCHEDULE OF QUANTITIES (25)
- 39 - 53 TYPICAL SECTIONS (15)
- 54 CROSS-TIES AND BENCH MARKS
- 55 - 83 PLAN AND PROFILE SHEETS (29)
- 84 - 101 STORM WATER AND POLLUTION AND PREVENTION PLAN (18)
- 102 - 107 DRAINAGE DETAILS (6)
- 108 - 119 PAVEMENT ELEVATION DETAILS (12)
- 120 - 133 PAVEMENT MARKING DETAILS (14)
- 134 - 136 TRAFFIC SIGNAL PLANS (3)
- 137 - 138 SUPERELEVATION DETAILS (2)
- 139 - 140 ENTRANCE AND SIDEROAD DETAILS (2)
- 141 CONCRETE COLLAR AND CULVERT EXTENSION DETAILS
- 142 MISCELLANEOUS DETAILS
- 143 - 198 CROSS-SECTION SHEETS (56)

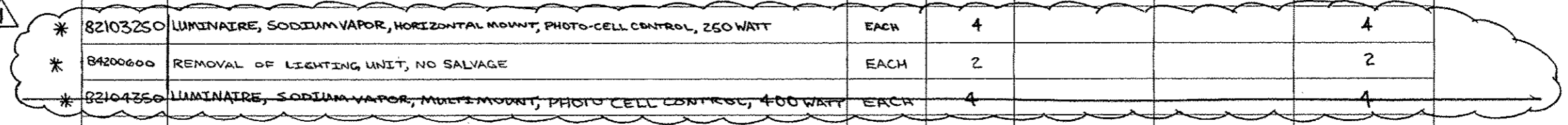
STANDARDS

- 000001-06 STANDARD SYMBOLS, ABBREVIATIONS, AND PATTERNS
- 280001-07 TEMPORARY EROSION CONTROL SYSTEMS
- 442201-03 CLASS C & D PATCHES
- 542301-03 PRECAST REINFORCED CONCRETE FLARED END SECTION
- 542311-04 GRATING FOR CONCRETE FLARED END SECTION (FOR 24" THRU 54" PIPE)
- 602301-03 INLET - TYPE A
- 602306-03 INLET - TYPE B
- 602401-03 MANHOLE TYPE A
- 602601-02 PRECAST REINFORCED CONCRETE FLAT SLAB TOP
- 604011-04 FRAME AND GRATE TYPE 3V
- 604036-02 GRATE TYPE B
- 606001-05 CONCRETE CURB TYPE B AND COMBINATION CONCRETE CURB AND GUTTER
- 606301-04 PC CONCRETE ISLANDS AND MEDIANS
- 635011-02 REFLECTOR MARKER AND MOUNTING DETAIL
- 701101-03 OFF ROAD MOVING OPERATIONS MULTILANE 15' TO 24' FROM PAVEMENT EDGE (SHOULDER WORK)
- 701201-04 LANE CLOSURE, 2L, 2W, DAY ONLY, FOR SPEEDS ≥ 45 MPH (INTRSCTN)
- 701306-03 LANE CLOSURE, 2L, 2W, SLOW MOVING OPERATIONS ONLY, FOR SPEEDS ≥ 45 MPH (INTRSCTN)
- 701326-04 LANE CLOSURE, 2L, 2W, PAVEMENT WIDENING, FOR SPEEDS ≥ 45 MPH (WIDENING)
- 701421-05 LANE CLOSURE MULTILANE DAY OPERATIONS ONLY, FOR SPEEDS ≥ 45 MPH TO 55 MPH (PATCHING & HMA RESURF)
- 701422-05 LANE CLOSURE MULTILANE, FOR SPEEDS ≥ 45 MPH TO 55 MPH (PATCHING & HMA RESURF)
- 701501-06 URBAN LANE CLOSURE, 2L, 2W, UNDIVIDED
- 701701-08 URBAN LANE CLOSURE MULTILANE INTERSECTION
- TRAFFIC CONTROL DEVICES
- 780001-03 TYPICAL PAVEMENT MARKING
- 781001-03 TYPICAL APPLICATIONS OF RAISED REFLECTIVE PAVEMENT MARKINGS
- 805001-01 ELECTRIC SERVICE INSTALLATION DETAILS
- 814001-02 HANDHOLES
- 814006-02 DOUBLE HANDHOLES
- 836001-02 LIGHT POLE FOUNDATION
- 857001-01 STANDARD PHASE DESIGNATION DIAGRAMS
- 862001-01 UNINTERRUPTIBLE POWER SUPPLY
- 873001-02 TRAFFIC SIGNAL GROUNDING AND BOUNDING
- 877001-05 STEEL MAST ARM ASSEMBLY AND POLE 16' THROUGH 55'
- 878001-09 CONCRETE FOUNDATION DETAILS
- 880006-01 TRAFFIC SIGNAL MOUNTING DETAIL
- 817011-05 STEEL COMBINATION MAST ARM ASSEMBLY AND POLE 16' THROUGH 55'

DISTRICT SIX	
EXAMINED <u>12/5</u>	20 <u>12</u>
<i>William M. Brown</i> OPERATIONS ENGINEER	
EXAMINED <u>DEC 10</u>	20 <u>12</u>
<i>Jimmy Z...</i> PROJECT IMPLEMENTATION ENGINEER	
EXAMINED <u>Dec. 14</u>	20 <u>12</u>
<i>ARMU</i> PROGRAM DEVELOPMENT ENGINEER	

⚠ REVISION 2-19-13

CODE NO.	ITEM	UNIT	TOTAL QUANTITY	CONSTRUCTION CODE		
				90% FEDERAL 10% STATE	90% FEDERAL 10% STATE	90% FEDERAL 10% STATE
				ROADWAY 0004	ROADWAY 0005	SAFETY 0021
				RURAL	RURAL	RURAL
* 81028360	UNDERGROUND CONDUIT, PVC, 2 1/2" DIA.	FOOT	180			180
* 81028370	UNDERGROUND CONDUIT, PVC, 3" DIA.	FOOT	55			55
* 81028390	UNDERGROUND CONDUIT, PVC, 4" DIA.	FOOT	12			12
* 81400100	HANDHOLE	EACH	7			7
* 81400300	DOUBLE HANDHOLE	EACH	1			1
* 81702441	ELECTRIC CABLE IN CONDUIT, 600V (XLP-TYPE USE) 2-12/C, 1-12/C GROUND	FOOT	459			459
* 82103250	LUMINAIRE, SODIUM VAPOR, HORIZONTAL MOUNT, PHOTO-CELL CONTROL, 250 WATT	EACH	4			4
* 84200600	REMOVAL OF LIGHTING UNIT, NO SALVAGE	EACH	2			2
* 82104350	LUMINAIRE, SODIUM VAPOR, MULTI MOUNT, PHOTO CELL CONTROL, 400 WATT	EACH	4			4
* 85700300	FULL-ACTUATED CONTROLLER AND TYPE V CABINET	EACH	1			1
* 85706000	INTERSECTION MONITOR UNIT	EACH	1			1
* 86200200	UNINTERRUPTABLE POWER SUPPLY, STANDARD	EACH	1			1
* 86400100	TRANSCEIVER - FIBER OPTIC	EACH	1			1
* 87301245	ELECTRIC CABLE IN CONDUIT, SIGNAL NO. 14 5C	FOOT	1,696			1,696
* 87301255	ELECTRIC CABLE IN CONDUIT, SIGNAL NO. 14 7C	FOOT	1,165			1,165
* 87301265	ELECTRIC CABLE IN CONDUIT, SIGNAL NO. 14 9C	FOOT	95			95



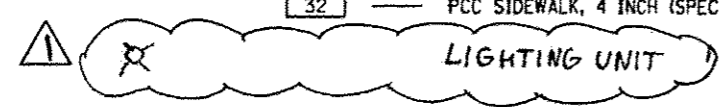
⚠ REVISIED 2-19-13
*SPECIALTY ITEM

FILE NAME =	USER NAME = cabrerars	DESIGNED - JWC	REVISED -	STATE OF ILLINOIS DEPARTMENT OF TRANSPORTATION	SUMMARY OF QUANTITIES				F.A.P. RTE.	SECTION	COUNTY	TOTAL SHEETS	SHEET NO.
c:\p\work\p\idoc\cabrerars\8259630\0072E31-shr.sog.dgn	DRAWN - JWC	REVISED -			•	(UN,TS-2RS-5&(78)RS-3	ADAMS	194	10				
PLOT SCALE = 3/32" = 1' / dm	CHECKED - RSC	REVISED -			CONTRACT NO. 72E31								
Default	DATE -	REVISED -			ILLINOIS FED. AID PROJECT								
					SCALE:	SHEET 8	OF 11 SHEETS	STA.	TO STA.	* FAP 63 (US 24); FAP 63 (US 24/IL 96); FAP 506 (IL 96)			

PLAN SHEET SYMBOLS

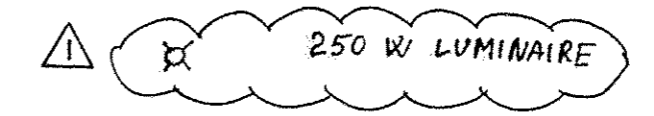
EXISTING	PROPOSED	
		SIGNAL HEAD
		SIGNAL HEAD WITH BACKPLATE
		TEMPORARY SIGNAL HEAD
		VIDEO VEHICLE DETECTOR CAMERA
		PEDESTRIAN SIGNAL HEAD
		PEDESTRIAN PUSHBUTTON DETECTOR
		DETECTOR LOOP
		QUADRAPOLE DETECTOR LOOP
		SIGNAL POST
		ALUMINUM MAST ARM ASSEMBLY AND POLE
		STEEL MAST ARM ASSEMBLY AND POLE
		COMBINATION SIGNAL AND LIGHT POLE
		WOOD POLE
		WOOD POLE WITH GUY
		SERVICE INSTALLATION
		CONTROLLER
		HANDHOLE
		HEAVY DUTY HANDHOLE
		DOUBLE HANDHOLE
		JUNCTION BOX
		GULFBOX JUNCTION
		AERIAL CABLE
		CONDUIT
		LENGTH - CONSTRUCTION (T=TRENCH P=PUSHED A=AUGERED E=EXISTING) SIZE - TYPE (S=STEEL P=PVC)
		CONDUIT SPLICE
		SPAN WIRE/TETHER WIRE

56	—	SIDEWALK REMOVAL IN SQ. FT.
40	—	PCC SIDEWALK, 4 INCH IN SQ. FT.
32	—	PCC SIDEWALK, 4 INCH (SPECIAL) IN SQ. FT.



CABLE PLAN SYMBOLS

EXISTING	PROPOSED	
		8" SIGNAL SECTION
		12" SIGNAL SECTION
		DIRECTIONAL SIGNAL SECTION
		9" PEDESTRIAN SIGNAL FACE
		12" PEDESTRIAN SIGNAL FACE
		SIGNAL FACE WITH BACKPLATE
		PROGRAMMED SIGNAL SECTION
		SIGNAL SECTION WITH LOUVRE
		DUAL-INDICATION SIGNAL SECTION
		INDUCTION DETECTOR LOOP
		QUADRAPOLE DETECTOR LOOP
		DIRECT-CONNECTED LOOP LEAD-IN (TWISTED)
		ELECTRIC CABLE DENOTING NUMBER OF CONDUCTORS
		ELECTRIC CABLE TO BE REMOVED
		ELECTRIC CABLE IDENTIFIER TAPE CODES (R=RED W=WHITE Y=YELLOW G=GREEN B=BLUE O=ORANGE)
		PEDESTRIAN PUSHBUTTON DETECTOR
		VIDEO CAMERA
		STEEL TWIN TENON



REVISION
 REVISED 2-19-13

FILE NAME	USER NAME	DESIGNED	REVISED	STATE OF ILLINOIS DEPARTMENT OF TRANSPORTATION	TRAFFIC SIGNAL LEGEND			F.A.P. RTE.	SECTION	COUNTY	TOTAL SHEETS	SHEET NO.			
all\pwr\mark\spc\det\spc\pwr\spc\102201830\1027	EE-31-mht-TS.dgn	DRAWN	REVISED		SCALE: 20	SHEET 1	OF 1	SHEETS	STA.	TO STA.	63	11M.TS-2RS-5&7BRS-3	ADAMS	194	134
PLOT SCALE = 48,000' / 1"	CHECKED	REVISED			CONTRACT NO. 72E31				ILLINOIS FED. AID PROJECT						
PLOT DATE = Dec-14-2012 02:45:53PM	DATE	REVISED													

TRAFFIC SIGNAL QUANTITIES

LOCATION: US 24 @ IL 96

QUANTITY	UNIT	ITEM
-	50 FT	SIGN PANEL, TYPE 2
120.0	FOOT	UNDERGROUND CONDUIT, PVC, 1 1/2" DIA.
190.0	FOOT	UNDERGROUND CONDUIT, PVC, 2" DIA.
180.0	FOOT	UNDERGROUND CONDUIT, PVC, 2 1/2" DIA.
55.0	FOOT	UNDERGROUND CONDUIT, PVC, 3" DIA.
12.0	FOOT	UNDERGROUND CONDUIT, PVC, 4" DIA.

EXISTING LIGHTING UNIT
TO BE REMOVED

1	EACH	INTERSECTION MONITOR UNIT
1	EACH	FULL-ACTUATED CONTROLLER AND TYPE V CABINET
1	EACH	TRANSCEIVER - FIBER OPTIC
1696	FOOT	ELECTRIC CABLE IN CONDUIT, SIGNAL NO. 14, 5C
1165	FOOT	ELECTRIC CABLE IN CONDUIT, SIGNAL NO. 14, 7C
95	FOOT	ELECTRIC CABLE IN CONDUIT, SIGNAL NO. 14, 9C
13	FOOT	ELECTRIC CABLE IN CONDUIT, SERVICE NO. 6, 2C

COMBINATION LIGHTING
2-250 W HORIZONTAL MOUNT LUMINAIRES
ON TWIN 15 FT MAST ARMS

NOTE: RUN ONE CONDUIT UP THE SIDE OF UTILITY
POLE AND CAP FOR PHONE SERVICE INSTALLATION

COMBINATION LIGHTING
2-250 W HORIZONTAL MOUNT LUMINAIRES
ON TWIN 15 FT MAST ARMS

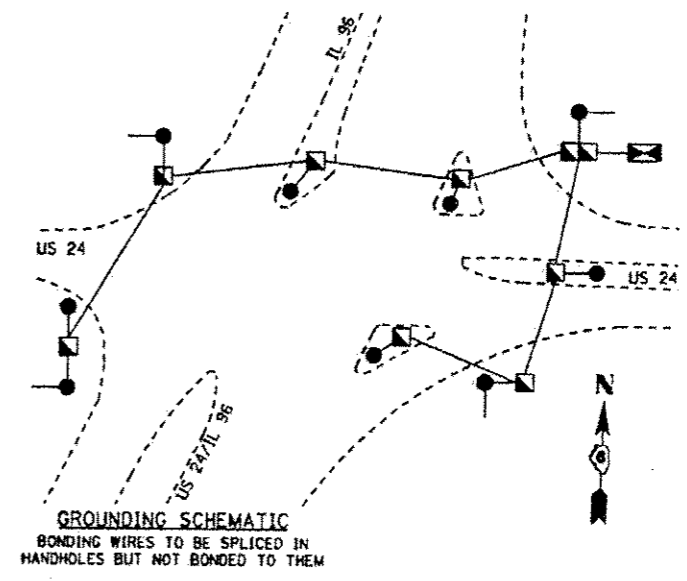
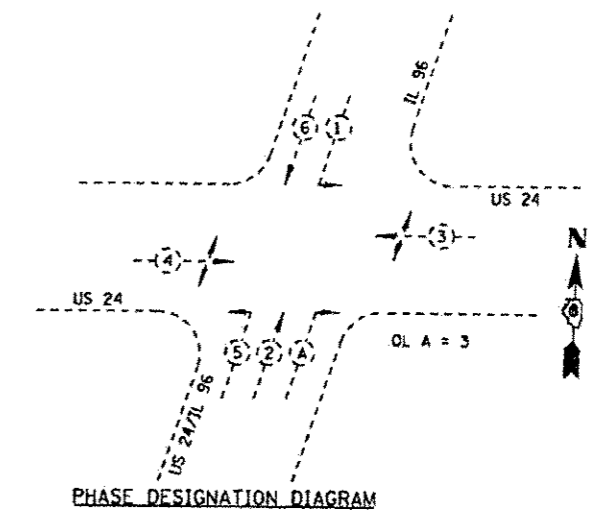
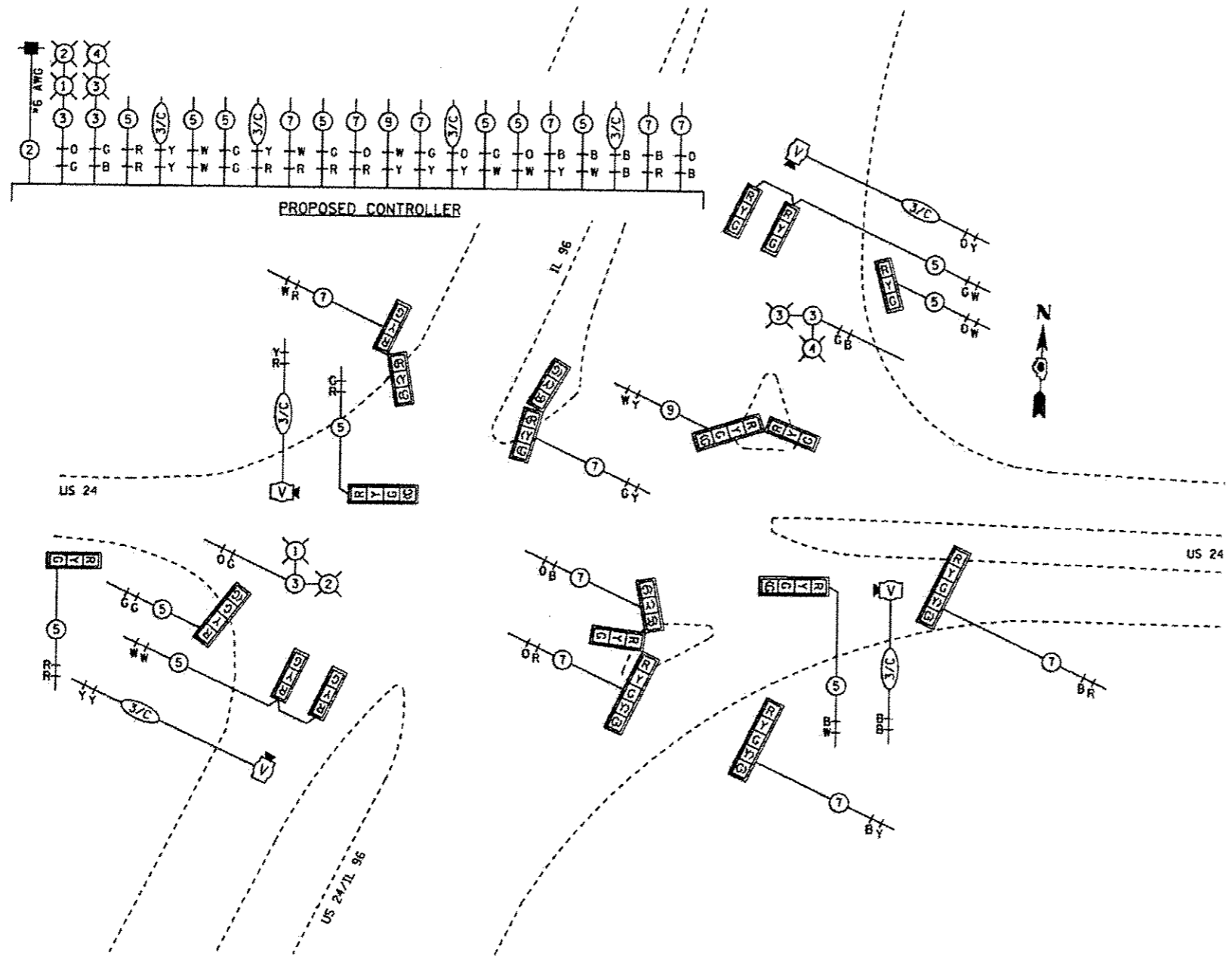
EXISTING LIGHTING UNIT
TO BE REMOVED

1	EACH	UNINTERRUPTABLE POWER SUPPLY, STANDARD
20	EACH	TRAFFIC SIGNAL BACKPLATE
4	EACH	SIGNAL HEAD, POLYCARBONATE, LED, 1-FACE, 3-SECTION, MAST ARM MOUNTED
2	EACH	SIGNAL HEAD, POLYCARBONATE, LED, 1-FACE, 4-SECTION, MAST ARM MOUNTED
2	EACH	SIGNAL HEAD, POLYCARBONATE, LED, 1-FACE, 5-SECTION, BRACKET MOUNTED
2	EACH	SIGNAL HEAD, POLYCARBONATE, LED, 2-FACE, 3-SECTION, BRACKET MOUNTED
1	EACH	SIGNAL HEAD, POLYCARBONATE, LED, 3-FACE, 2-3 SECTION, 1-5 SECTION, BRACKET MOUNTED
2	EACH	SIGNAL HEAD, POLYCARBONATE, LED, 1-FACE, 3 SECTION, BRACKET MOUNTED
1	EACH	SIGNAL HEAD, POLYCARBONATE, LED, 1-FACE, 4 SECTION, BRACKET MOUNTED
1	EACH	SIGNAL HEAD, POLYCARBONATE, LED, 2-FACE, 1-3 SECTION, 1-4 SECTION, BRACKET MOUNTED
4	EACH	CAMERA MOUNTING ASSEMBLY
1	EACH	SERVICE INSTALLATION, TYPE A
7	EACH	HANDHOLE
1	EACH	DOUBLE HANDHOLE
1	EACH	VIDEO VEHICLE DETECTION, 4 CAMERAS
645	FOOT	ELECTRIC CABLE IN CONDUIT, EQUIPMENT GROUNDING CONDUCTOR, NO 6, 1C

970.0	FOOT	ELECTRIC CABLE IN CONDUIT, SIGNAL NO. 18 3C
459	FOOT	ELECTRIC CABLE IN CONDUIT, 600V (XLP-TYPE USE) 2-12/C, 1-12/C GROUND
4	EACH	LUMINAIRE, SODIUM VAPOR, HORIZONTAL MOUNT, PHOTO-CELL CONTROL, 250 WATT
2	EACH	TRAFFIC SIGNAL POST, ALUMINUM, 16 FT.
1	EACH	TRAFFIC SIGNAL POST, ALUMINUM, 15 FT.
2	EACH	TRAFFIC SIGNAL POST, ALUMINUM, 14 FT.
1	EACH	STEEL MAST ARM ASSEMBLY AND POLE, 38 FT.
1	EACH	STEEL COMBINATION MAST ARM ASSEMBLY AND POLE, 40 FT.
1	EACH	STEEL COMBINATION MAST ARM ASSEMBLY AND POLE, 46 FT.
1	EACH	STEEL MAST ARM ASSEMBLY AND POLE, 40 FT.
15.0	FOOT	CONCRETE FOUNDATION, TYPE A
50.0	FOOT	CONCRETE FOUNDATION, TYPE E, 36" DIA.
3.0	FOOT	CONCRETE FOUNDATION, TYPE C

REVISI REVISION SHEET 2-19-13

FILE NAME	USER NAME	DESIGNED	REVISION	STATE OF ILLINOIS DEPARTMENT OF TRANSPORTATION	TRAFFIC SIGNAL PLAN	F.A.P. RTE.	SECTION	COUNTY	TOTAL SHEETS	SHEET NO.
						63	11N/TS-2RS-5&7BR5-3	ADAMS	194	135
									CONTRACT NO. 72E31	
									ILLINOIS FED. AID PROJECT	



⚠ REVISIED SHEET 2-19-13

FILE NAME *	USER NAME *	DESIGNED -	REVISIED -	STATE OF ILLINOIS DEPARTMENT OF TRANSPORTATION	PROPOSED CABLE PLAN		F.A.P. RTL.	SECTION	COUNTY	TOTAL SHEETS	SHEET NO.	
or \\server\work\projects\l\apark\eg\72E31\6301.DWG	72E31-shc-13.dgn	DRAWN -	REVISIED -		SCALE: 20	SHEET 1 OF 3 SHEETS	STA.	63	11H,TS-2RS-5&CTBRS-3	ADAMS	194	136
	PLOT SCALE = 40,0000 1/4"	CHECKED -	REVISIED -				TO STA.					
	PLOT DATE = Dec-14-2012 03:45:02PM	DATE -	REVISIED -									CONTRACT NO. 72E31
ILLINOIS FED. AID PROJECT												